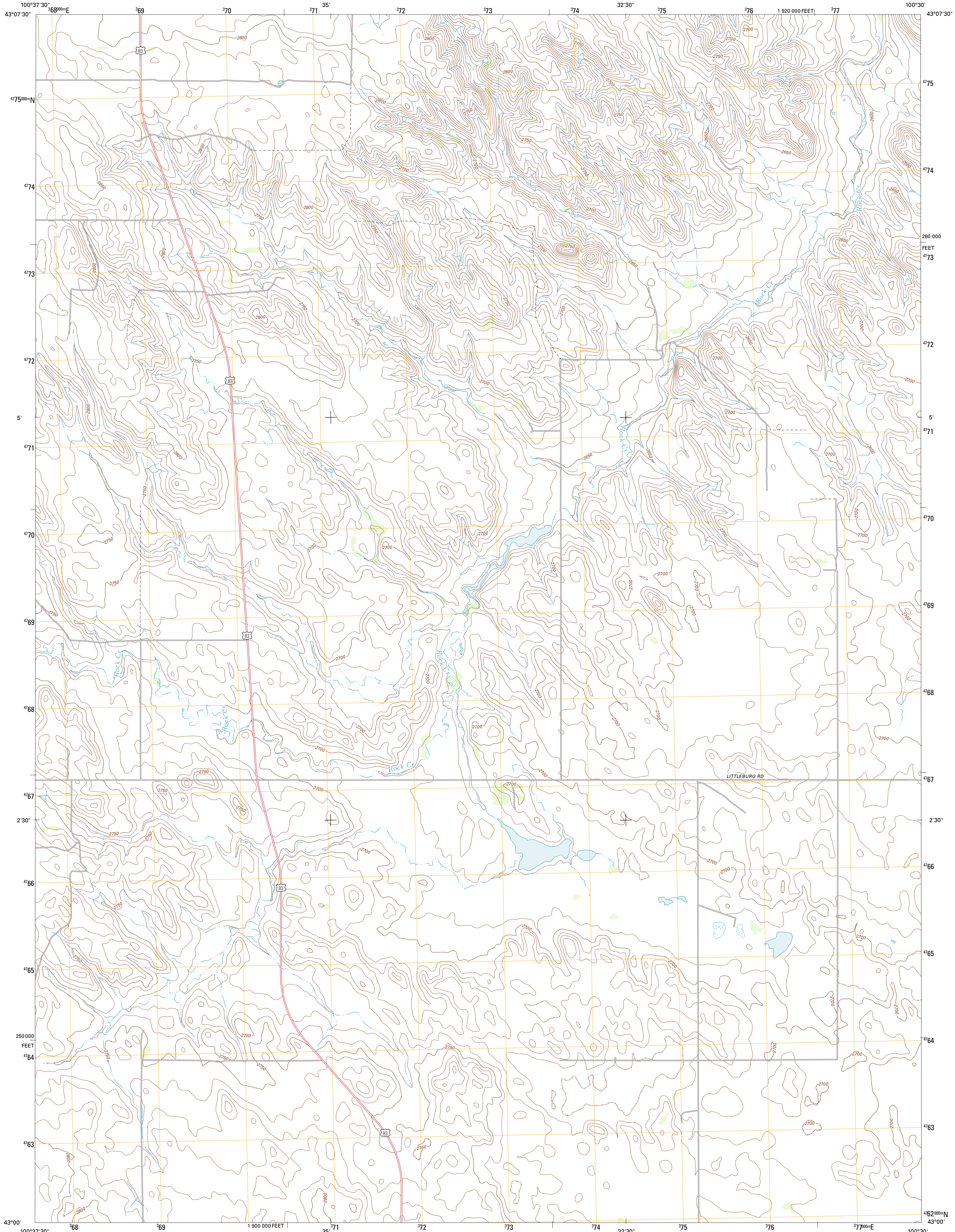




U.S. DEPARTMENT OF THE INTERIOR  
U. S. GEOLOGICAL SURVEY

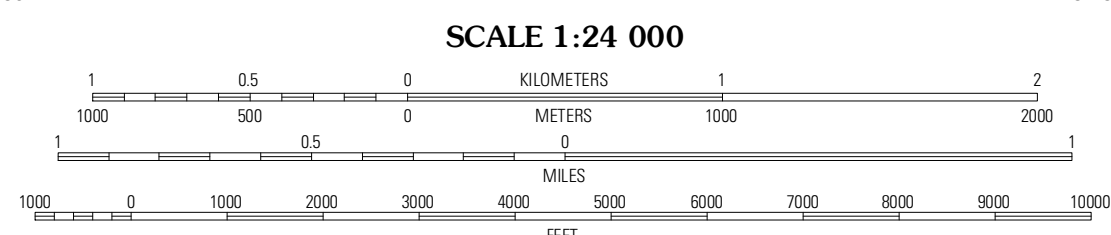
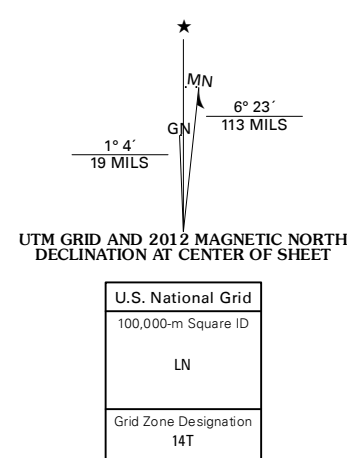


OLSONVILLE SE QUADRANGLE  
SOUTH DAKOTA-TODD CO.  
7.5-MINUTE SERIES

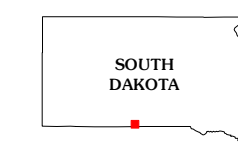


Produced by the United States Geological Survey  
North American Datum of 1983 (NAD83)  
World Geodetic System of 1984 (WGS84). Projection and  
1 000-meter grid: Universal Transverse Mercator, Zone 14T  
10 000-foot ticks: South Dakota Coordinate System of 1983  
(south zone)

Imagery.....NAP, July 2010  
Roads.....©2006-2011, TomTom  
Names.....National Geospatial Information System, 2011  
Hydrography.....National Hydrography Dataset, 2010  
Contours.....National Elevation Dataset, 2012  
Boundaries.....Census, IBWC, IBC, USGS, 1972 - 2010

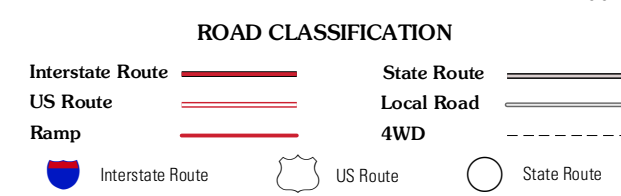


CONTOUR INTERVAL 10 FEET  
NORTH AMERICAN VERTICAL DATUM OF 1988  
This map was produced to conform with the  
National Geospatial Program US Topo Product Standard, 2011.  
A metadata file associated with this product is draft version 0.6.3



QUADRANGLE LOCATION

Olsonville NW	Olsonville	Hidden Timber
Olsonville SW	Olsonville SE	Littleberg
Crookston East	Valentine North	Cornell Dam



OLSONVILLE SE, SD  
2012

ADJOINING 7.5 QUADRANGLES