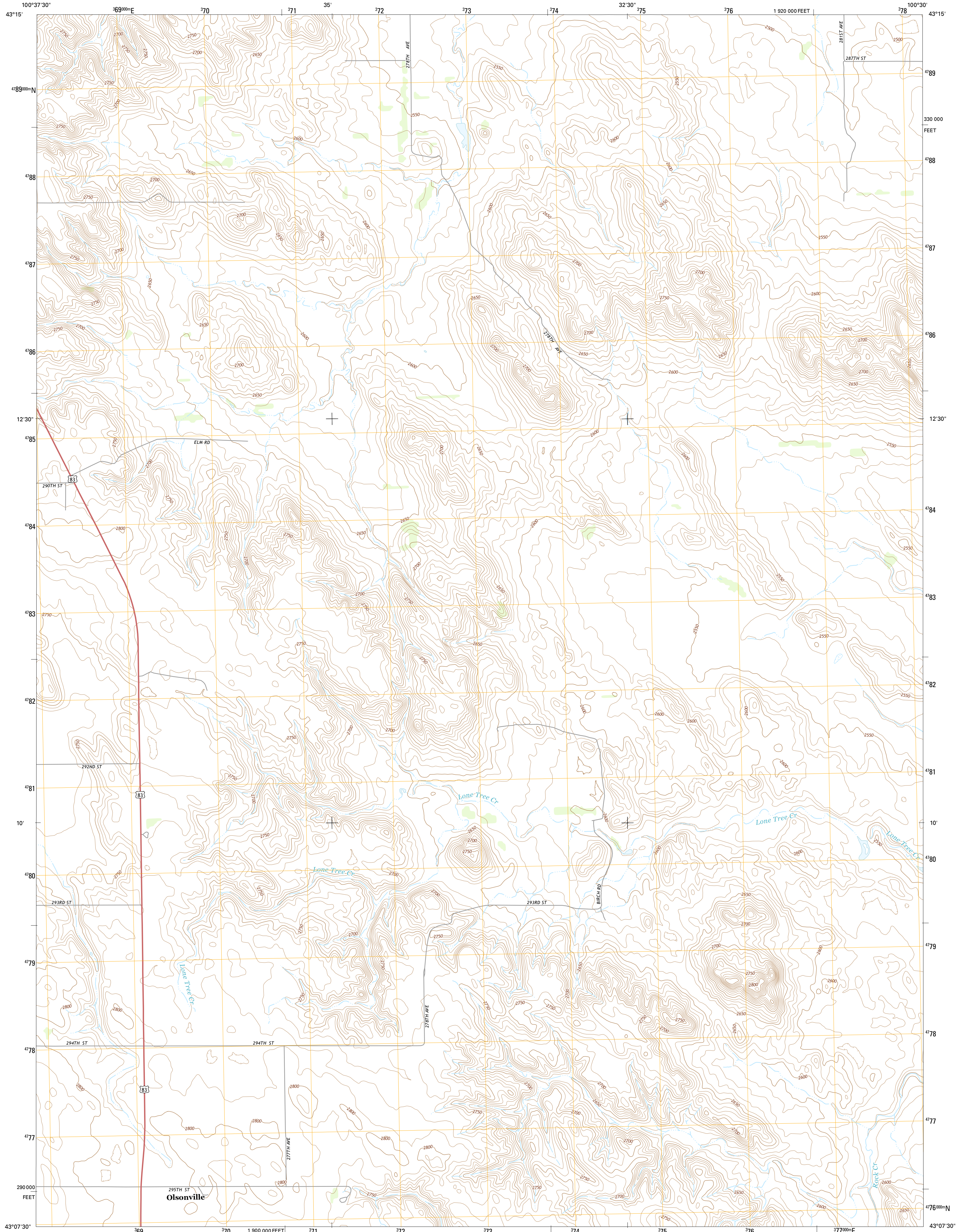




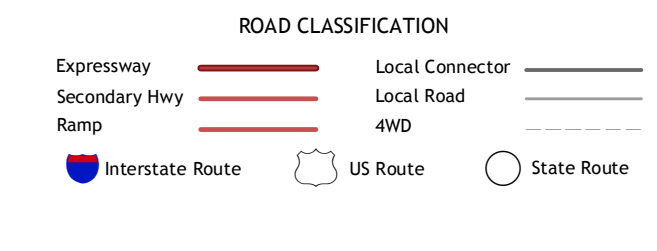
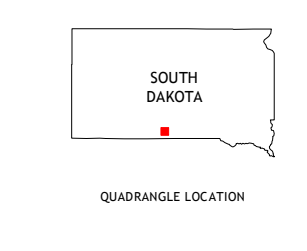
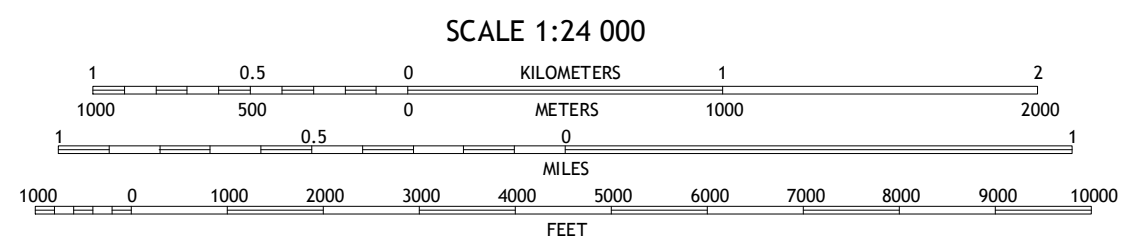
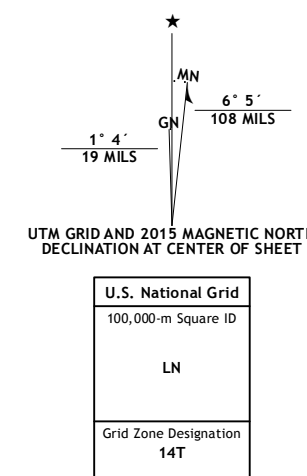
U.S. DEPARTMENT OF THE INTERIOR
U.S. GEOLOGICAL SURVEY



OLSONVILLE QUADRANGLE
SOUTH DAKOTA-TODD CO.
7.5-MINUTE SERIES



Produced by the United States Geological Survey
 North American Datum of 1983 (NAD83)
 World Geodetic System of 1984 (WGS84), Projection and
 1 000-meter grid: Universal Transverse Mercator, Zone 14T
 (south zone)
 This map is not a legal document. Boundaries may be
 generalized for this map scale. Private lands within government
 reservations may not be shown. Obtain permission before
 entering private lands.
 Imagery:.....NAIP, July 2014
 Roads:.....HERE, ©2013 - 2014
 Names:.....GNIS, 2015
 Hydrography:.....National Hydrography Dataset, 2014
 Contours:.....National Elevation Dataset, 2012
 Boundaries:.....Multiple sources; see metadata file 1972 - 2015
 Public Land Survey System:.....BLM, 2015



CONTOUR INTERVAL 10 FEET
 NORTH AMERICAN VERTICAL DATUM OF 1988
 This map was produced to conform with the
 National Geospatial Program US Topo Product Standard, 2011.
 A metadata file associated with this product is draft version 0.6.18

1	2	3
4	5	6
7	8	

ADJOINING QUADRANGLES

OLSONVILLE, SD
2015

