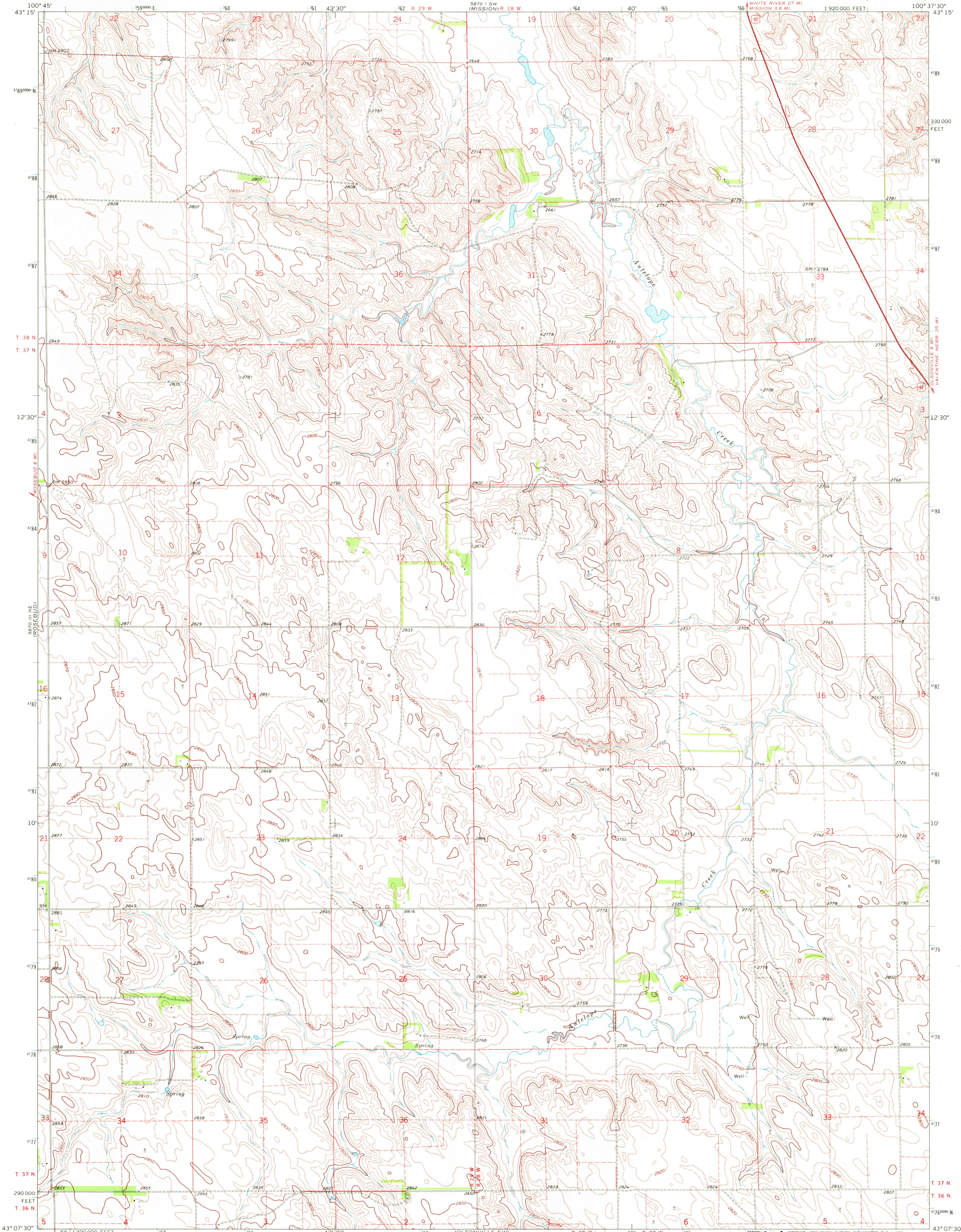
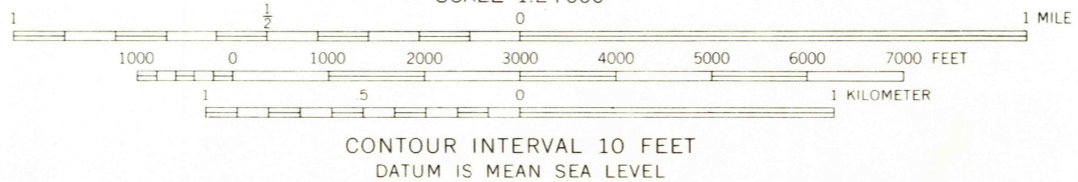
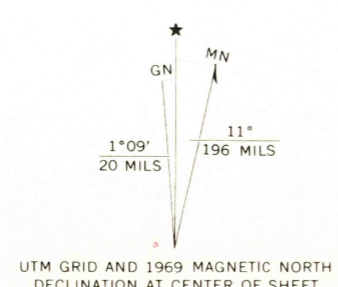


UNITED STATES
DEPARTMENT OF THE INTERIOR
GEOLOGICAL SURVEY

OLSONVILLE NW QUADRANGLE
SOUTH DAKOTA—TODD CO.
7.5 MINUTE SERIES (TOPOGRAPHIC)



Maped, edited, and published by the Geological Survey as part of the Department of the Interior program for the development of the Missouri River Basin Control by USGS and USC&GS
Topography by photogrammetric methods from aerial photographs taken 1966. Field checked 1969
Polyconic projection. 1927 North American datum 10,000-foot grid based on South Dakota coordinate system, south zone 1000-meter Universal Transverse Mercator grid ticks, zone 14, shown in blue
Entire area lies within the Rosebud Indian Reservation
Fine red dashed lines indicate selected fence and field lines where generally visible on aerial photographs. This information is uncheckd



CONTOUR INTERVAL 10 FEET
DATUM IS MEAN SEA LEVEL



ROAD CLASSIFICATION
Primary highway, all weather, hard surface
Light duty road, all weather, improved surface
Unimproved road, fair or dry weather
U.S. Route

THIS MAP COMPLIES WITH NATIONAL MAP ACCURACY STANDARDS
FOR SALE BY U.S. GEOLOGICAL SURVEY, DENVER, COLORADO 80225, OR WASHINGTON, D.C. 20242
A FOLDER DESCRIBING TOPOGRAPHIC MAPS AND SYMBOLS IS AVAILABLE ON REQUEST

OLSONVILLE NW, S. DAK.
N4307.5-W10037.5/7.5

USGS
HISTORICAL FILE
TOPOGRAPHIC DIVISION

1969
AMS 5870 II NW—SERIES V873

2290