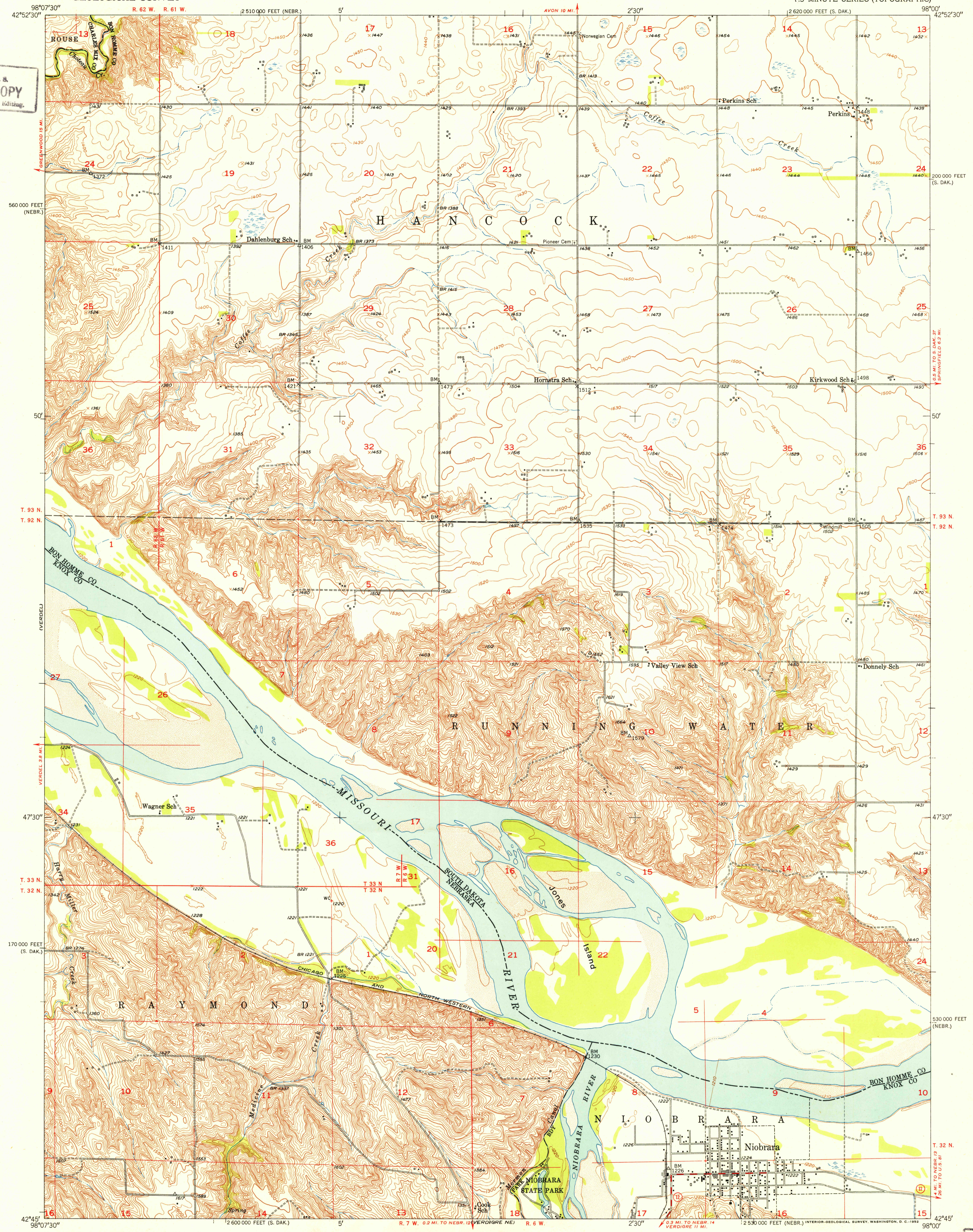
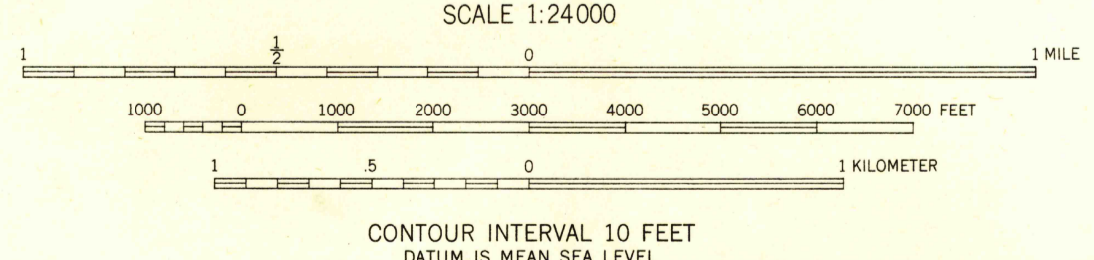


U. S. G. S.
FILE COPY
Inspection and Editing



Mapped, edited, and published by the Geological Survey as part of the Department of the Interior program for the development of the Missouri River Basin. Control by USGS and USC&GS. Topography by multiplex methods from aerial photographs taken 1946, by plane-table surveys 1950, and in part by U. S. Corps of Engineers. Field check 1950. Polyconic projection. 1927 North American datum. 10,000-foot grids based on South Dakota coordinate system, south zone, and Nebraska coordinate system, north zone.



ROAD CLASSIFICATION
Heavy-duty... 2 LANE ISLAND Light-duty...
Medium-duty... 2 LANE ISLAND Unimproved dirt...
U. S. Route State Route

USGS
HISTORICAL FILE
TOPOGRAPHIC DIVISION

NIOBARA, S. DAK.-NEBR.
N4245-W9800/7.5

THIS MAP COMPLIES WITH NATIONAL MAP ACCURACY STANDARDS
FOR SALE BY U. S. GEOLOGICAL SURVEY, FEDERAL CENTER, DENVER, COLORADO OR WASHINGTON 25, D. C.
A FOLDER DESCRIBING TOPOGRAPHIC MAPS AND SYMBOLS IS AVAILABLE ON REQUEST

1950

U. S. G. S.
FILE COPY
Inspection and Editing