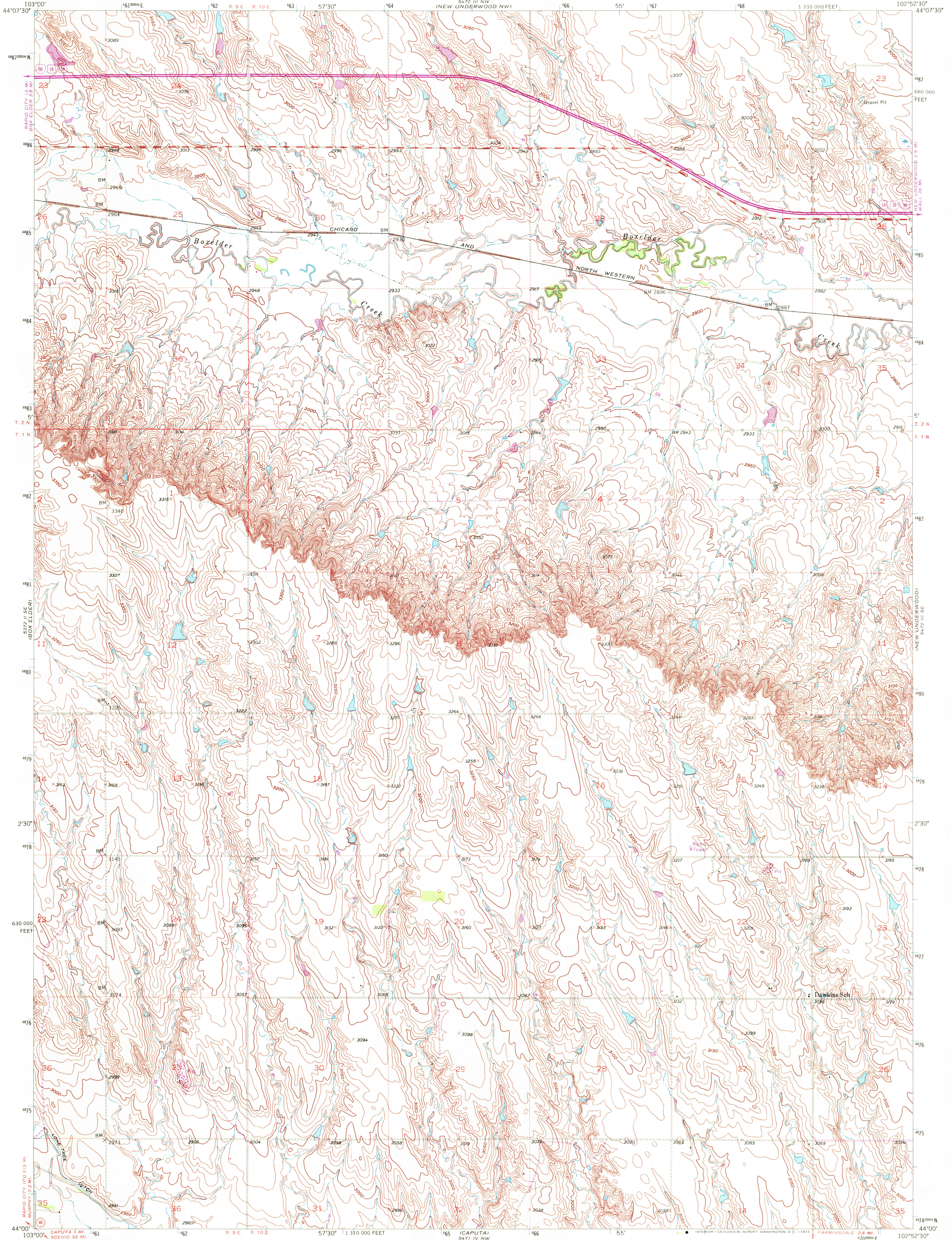


5472 III NE  
5471 I NE

5472 III NE  
5471 IV NE

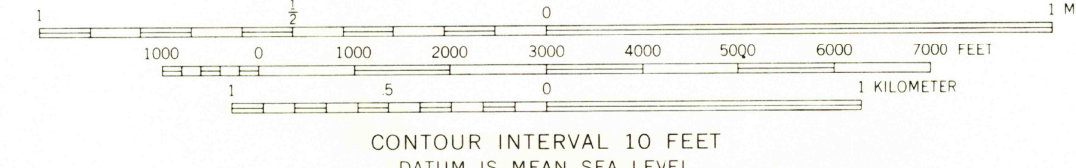
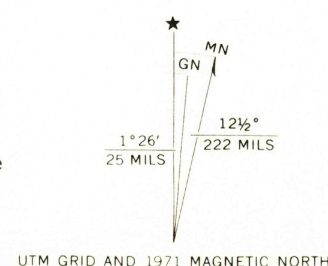


Mapped, edited, and published by the Geological Survey

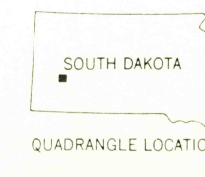
Control by USGS and USC&GS  
Topography from aerial photographs by multiplex methods  
Aerial photographs taken 1952. Field check 1953

Polyconic projection. 1927 North American datum  
10,000-foot grid based on South Dakota coordinate system, south zone  
1000-meter Universal Transverse Mercator grid ticks,  
zone 13, shown in blue

Revisions shown in purple compiled from aerial photographs  
taken 1971. This information not field checked



CONTOUR INTERVAL 10 FEET  
DATUM IS MEAN SEA LEVEL



ROAD CLASSIFICATION

Heavy-duty	4 LANE 16 LANE	Light-duty
Medium-duty	4 LANE 16 LANE	Unimproved dirt
U.S. Route		State Route
		Interstate Route

NEW UNDERWOOD SW, S. DAK.  
N4400-W10252.5/7.5

1953  
PHOTOREVISED 1971  
AMS 5472 III SW - SERIES V873

USGS  
HISTORICAL FILE  
TOPOGRAPHIC DIVISION

JUN 01 1972

2305