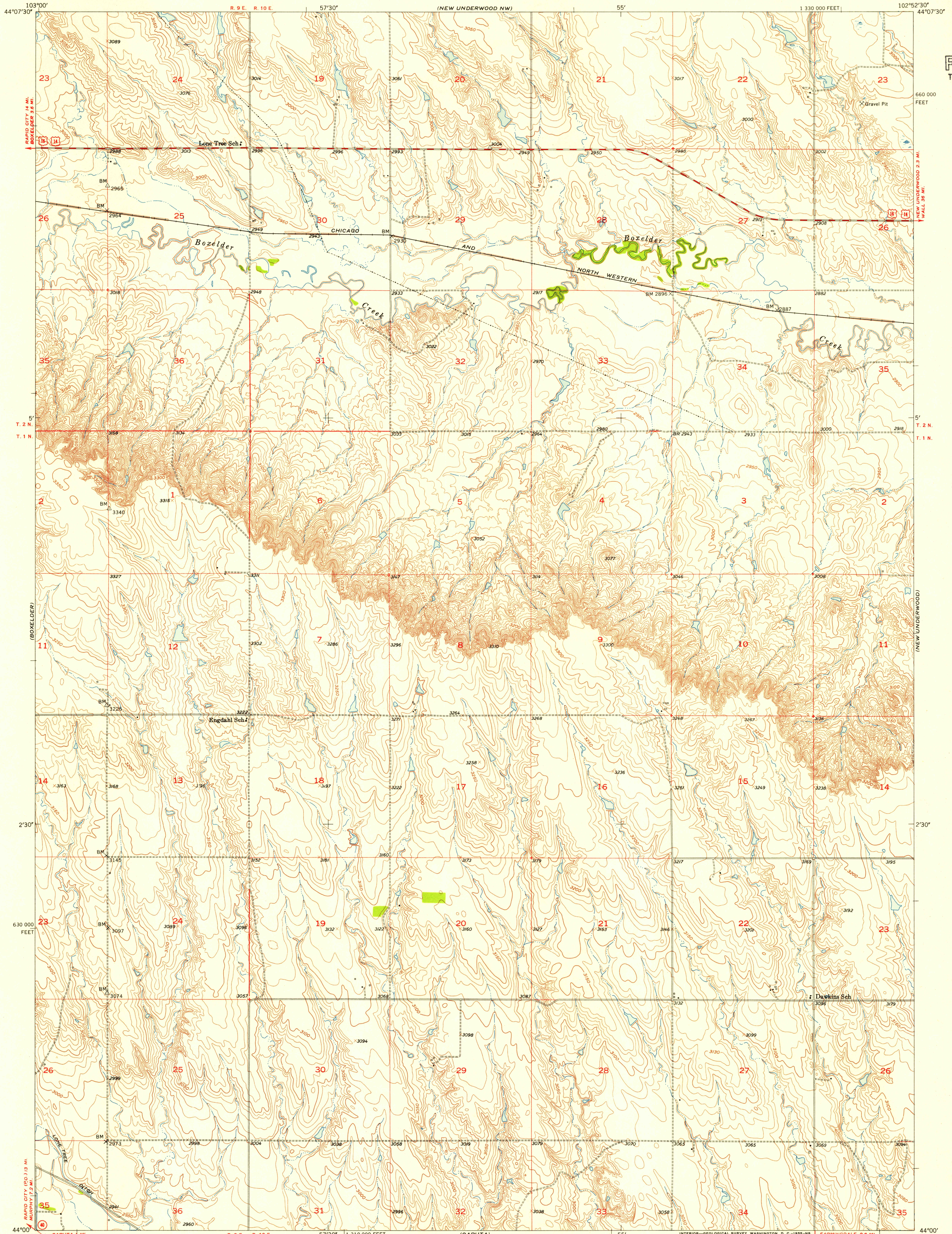
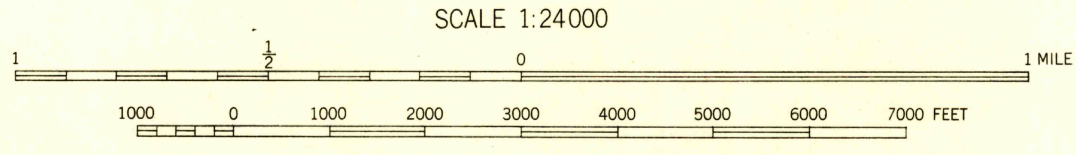
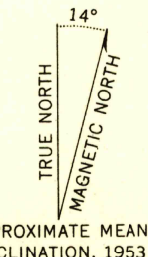


U.S.G.S.
FILE COPY
TOPOGRAPHIC DIVISION



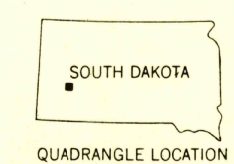
Mapped, edited, and published by the Geological Survey

Control by USGS and USC&GS
Topography from aerial photographs by multiplex methods
Aerial photographs taken 1952. Field check 1953
Polyconic projection. 1927 North American datum
10,000-foot grid based on South Dakota coordinate system,
south zone



CONTOUR INTERVAL 10 FEET
DATUM IS MEAN SEA LEVEL

USGS
HISTORICAL FILE
TOPOGRAPHIC DIVISION



ROAD CLASSIFICATION
Heavy-duty 4 LANE 16 LANE Light-duty
Medium-duty 4 LANE 16 LANE Unimproved dirt
U. S. Route State Route

NEW UNDERWOOD SW, S. DAK.
N4400-W10252.5/7.5

1953

THIS MAP COMPLIES WITH NATIONAL MAP ACCURACY STANDARDS
FOR SALE BY U. S. GEOLOGICAL SURVEY, FEDERAL CENTER, DENVER, COLORADO OR WASHINGTON 25, D. C.
A FOLDER DESCRIBING TOPOGRAPHIC MAPS AND SYMBOLS IS AVAILABLE ON REQUEST

U.S.G.S.
FILE COPY
TOPOGRAPHIC DIVISION