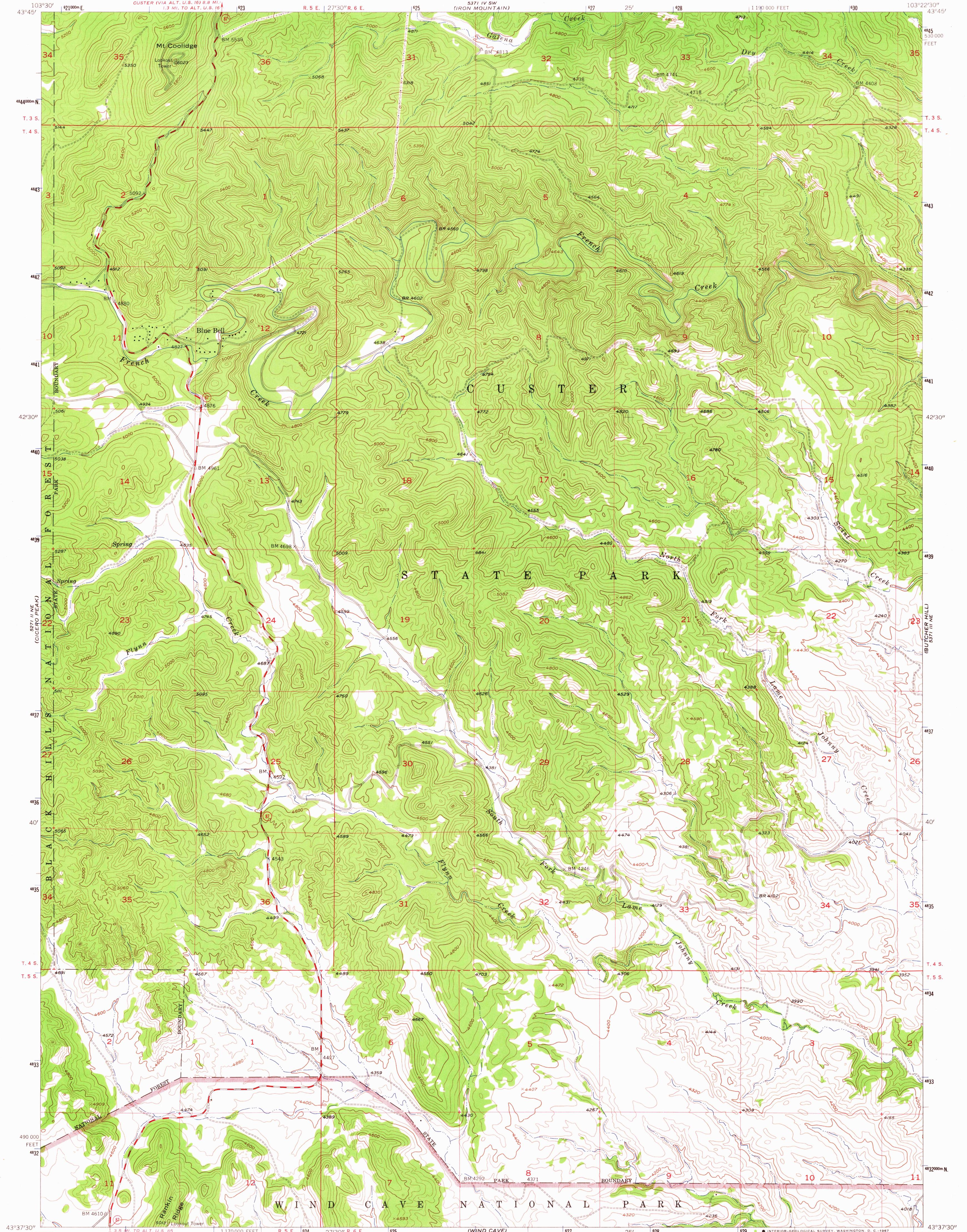


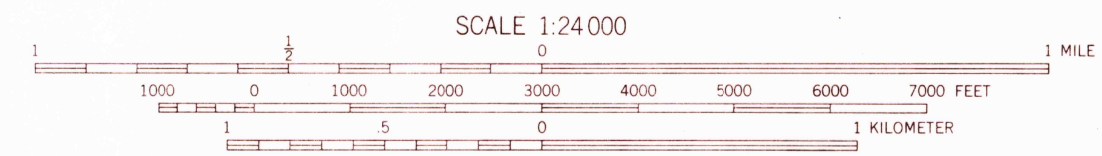
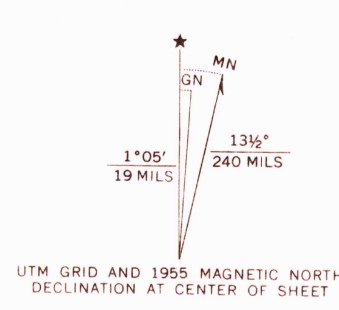
5211.5 E  
103°30'

5211.5 E  
103°30'



Mapped, edited, and published by the Geological Survey

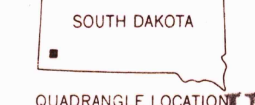
Control by USGS and USC&GS  
Topography from aerial photographs by multiplex methods  
Aerial photographs taken 1953. Field check 1955  
Polyconic projection. 1927 North American datum  
10,000-foot grid based on South Dakota coordinate system,  
south zone  
Unchecked elevations are shown in brown  
1000-meter Universal Transverse Mercator grid ticks,  
zone 13, shown in blue



CONTOUR INTERVAL 40 FEET  
DATUM IS MEAN SEA LEVEL

USGS HISTORICAL FILE TOPOGRAPHIC DIVISION

ROAD CLASSIFICATION	Symbol
Heavy-duty	Thick solid line
Medium-duty	Thin solid line
Light-duty	Dashed line
Unimproved dirt	Dotted line
U.S. Route	Circle with number
State Route	Square with number



U.S.G.S.  
FILE COPY  
TOPOGRAPHIC DIVISION

MT. COOLIDGE, S. DAK.  
N4337.5-W10322.5/7.5  
1955  
AMS 5571 III NW—SERIES V885

THIS MAP COMPLIES WITH NATIONAL MAP ACCURACY STANDARDS  
FOR SALE BY U.S. GEOLOGICAL SURVEY, DENVER, COLORADO 80225 OR WASHINGTON, D.C. 20242  
A FOLDER DESCRIBING TOPOGRAPHIC MAPS AND SYMBOLS IS AVAILABLE ON REQUEST

MAY 22 '67

2305

MAY 22 '67