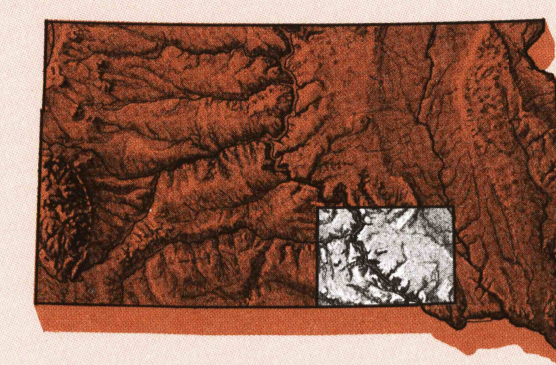


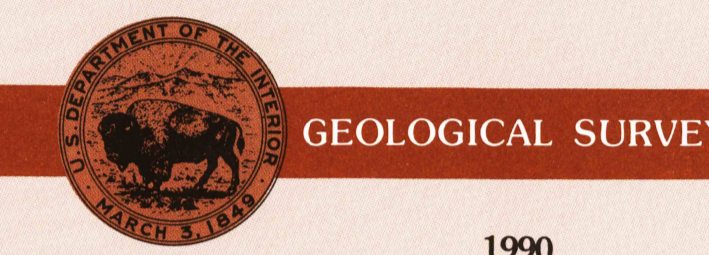
# Mitchell SOUTH DAKOTA

1:250 000-scale metric  
topographic map



1 X 2 DEGREE QUADRANGLE  
SHOWING

- Contours and elevations in meters
- Highways, roads and other manmade structures
- Water features
- Woodland areas
- Geographic names



Produced by the United States Geological Survey  
 Compiled from USGS 1:100 000-scale maps dated 1986  
 Map edited 1990. Supersedes map dated 1974  
 North American Datum of 1983 (NAD 83). Projection and  
 10 000-meter grid: Universal Transverse Mercator, zone 14,  
 25 000-meter grid ticks: South Dakota Coordinate System of 1983  
 (south zone)  
 The difference between NAD 83 and North American Datum of  
 1927 (NAD 27) for 7.5 minute intersections is given in USGS  
 Bulletin 1875  
 There may be private inholdings within the boundaries of the  
 National or State reservations shown on this map  
 Areas covered by dashed light-blue pattern  
 are subject to controlled inundation

1990 MAGNETIC DECLINATION FROM TRUE NORTH VARIES  
 FROM 8°/ (151 MILES) EASTERLY FOR THE CENTER OF THE  
 WEST EDGE TO 7° 11.33 MILES EASTERLY FOR THE CENTER  
 OF THE EAST EDGE. MEAN ANNUAL CHANGE IS 7.4 WESTERLY

CONTOUR INTERVAL 20 METERS  
 NATIONAL GEODETIC VERTICAL DATUM OF 1929  
 ELEVATIONS SHOWN TO THE NEAREST METER

THIS MAP COMPLIES WITH NATIONAL MAP ACCURACY STANDARDS

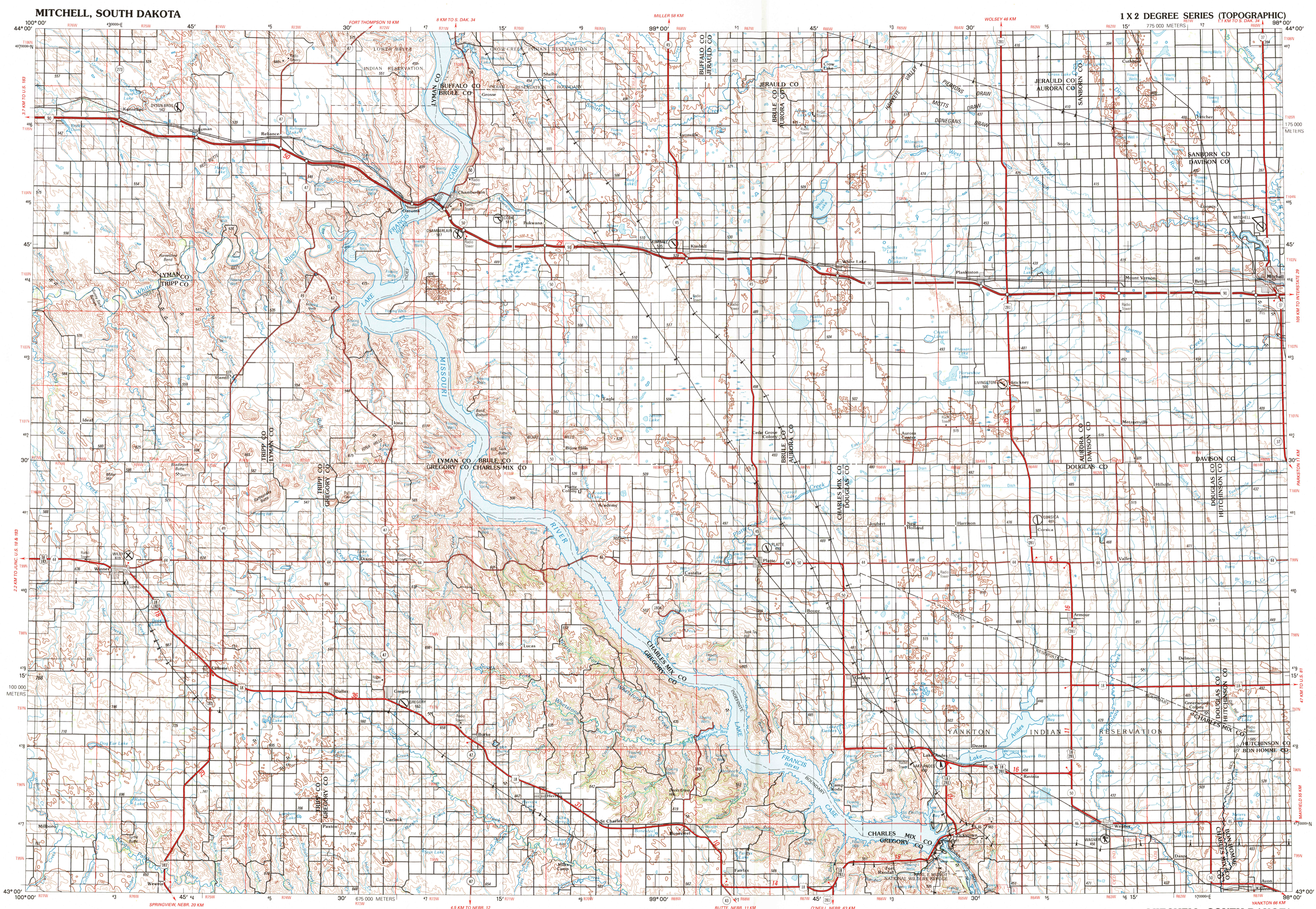
CONVERSION TABLE			
Meters	Feet	Feet	Meters
1	3.2808	2	3.048
2	6.5617	2	8096
3	9.8425	3	9144
4	13.1234	4	12192
5	16.4042	5	15240
6	19.6850	6	18288
7	22.9659	7	21336
8	26.2467	8	24384
9	29.5276	9	27432
10	32.8084	10	30480

ADJOINING MAPS			
1	2	3	
4		5	
6	7	8	

FOR SALE BY U.S. GEOLOGICAL SURVEY  
 DENVER, COLORADO 80225, OR RESTON, VIRGINIA 22092

Topographic Map Symbols	
Dual highway, interchange	
Primary highway, hard surface	
Secondary highway, hard surface	
Light duty road, hard or improved surface	
Other road, trail	
Road marker: Interstate, U.S., State	
Bridge, overpass, underpass	
Tunnel, road, railroad	
Railroad: standard gauge, single, multiple track	
Railroad: narrow gauge, single, multiple track	
Buildup area, locality, elevation	
Airport: runway pattern known; unknown	
National boundary	
State boundary	
County boundary	
National or State reservation boundary	
Land grant boundary	
U.S. public lands survey: range, township (surveyed)	
U.S. public lands survey: range, township (protracted)	
Poweline: pipeline, aboveground, underground	
Dam: landmark feature; landmark building	
Well, water, other, spring, tank	
Cave, mine, quarry, oil platform	
Landmark area, landmark railroad	
Dashed surface: strip mine, lava, sand	
Contours: index, intermediate; supplementary	
Bathymetric contours: index; primary	
Bathymetric contours: intermediate; supplementary	
Stream, lake: perennial; intermittent	
Rapids, large and small; falls, large and small	
Land subject to controlled inundation: marsh, swamp	
Woodland: orchard, vineyard	
Mangrove	

Figures in red denote approximate distances in kilometers between markers  
 A pamphlet describing topographic maps is available on request



SCALE 1:250 000  
 1 CENTIMETER ON THE MAP REPRESENTS 2.5 KILOMETERS ON THE GROUND  
 CONTOUR INTERVAL 20 METERS



USGS NHD HISTORICAL MAP  
 JUL 13 1991  
 REC'D FILE COPY

MITCHELL, SOUTH DAKOTA  
 43098-A1-TM-250

1990