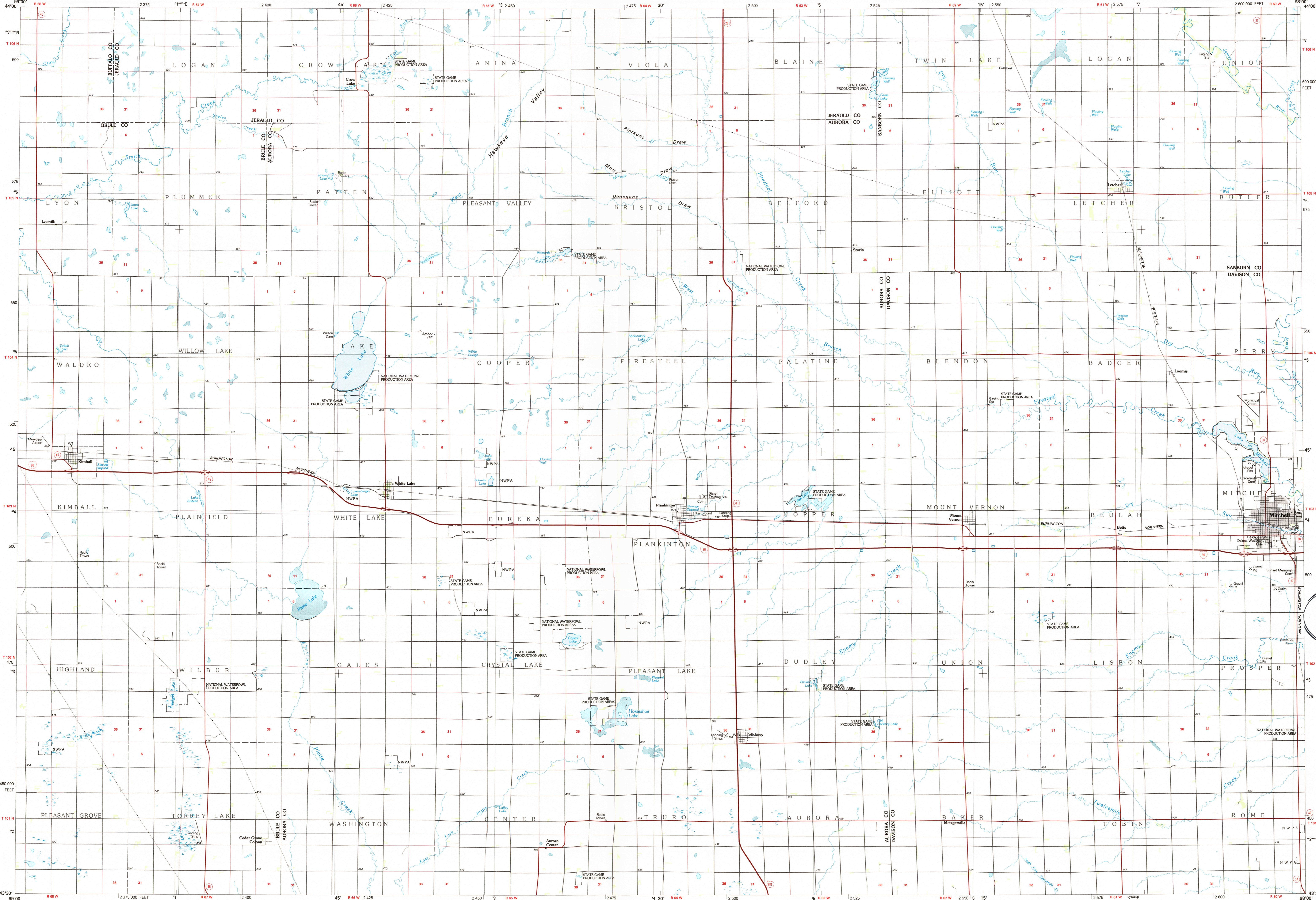


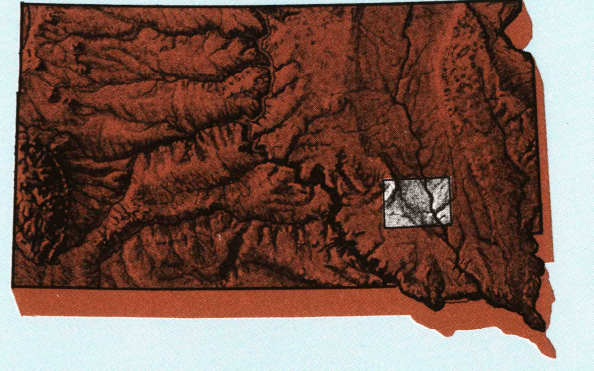
MITCHELL, SOUTH DAKOTA

30 X 60 MINUTE SERIES (PLANIMETRIC)



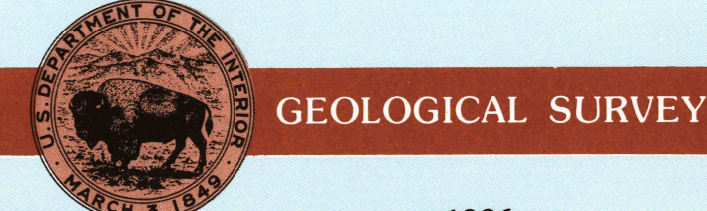
Mitchell SOUTH DAKOTA

1:100 000-scale planimetric map



30 X 60 MINUTE QUADRANGLE SHOWING

- Elevations in meters
- Highways, roads and other manmade structures
- Water features
- Woodland areas
- Geographic names



Produced by the United States Geological Survey  
 Compiled from USGS 1:24 000 and 1:25 000-scale topographic maps dated 1957-1982. Planimetry revised from aerial photographs taken 1984 and other source data. Revised information not field checked. Map edited 1986.

Projection and 10 000-meter grid, zone 14 Universal Transverse Mercator  
 25 000-foot grid ticks based on South Dakota coordinate systems, south zone, 1927 North American Datum. To place on the predicted North American Datum 1983 move the projection lines 6 meters south and 31 meters east. There may be private inholdings within the boundaries of the National or State reservations shown on this map.

NATIONAL GEODETIC VERTICAL DATUM OF 1929 ELEVATIONS SHOWN TO THE NEAREST METER

THIS MAP COMPLIES WITH NATIONAL MAP ACCURACY STANDARDS

CONVERSION TABLE		DECLINATION DIAGRAM		ADJOINING MAPS		
Meters	Feet	GN	M	1	2	3
1	3.2808	0°	0°	1	2	3
2	6.5617	1°	1°	4	5	
3	9.8425	2°	2°	6	7	8
4	13.1234	3°	3°			
5	16.4042	4°	4°			
6	19.6850	5°	5°			
7	22.9659	6°	6°			
8	26.2467	7°	7°			
9	29.5276	8°	8°			
10	32.8084	9°	9°			

To convert meters to feet multiply by 3.2808  
 To convert feet to meters multiply by 0.3048

UTM grid convergence (GN and 1986 magnetic declination (M)) at center of map  
 Diagram is approximate

1	Big Bend Dam
2	Huron
3	De Smet
4	Chamberlain
5	Sabers
6	Winnon
7	Lake Andes
8	Freeman

FOR SALE BY U.S. GEOLOGICAL SURVEY, DENVER, COLORADO 80225 OR RESTON, VIRGINIA 22092

AUG 18 1986

REC'D FILE COPY

Topographic Map Symbols

- Primary highway, hard surface
- Secondary highway, hard surface
- Light duty road, principal street, hard or improved surface
- Other road or street, trail
- Route marker: Interstate, U. S., State
- Railroad: standard gage; narrow gage
- Bridge; overpass; underpass
- Tunnel: road, railroad
- Built up area, locality, elevation
- Airport: landing field; landing strip
- National boundary
- State boundary
- County boundary
- National or State reservation boundary
- Land grant boundary
- U. S. public lands survey: range, township, section
- Range, township, section line: protracted
- Power transmission line; pipeline
- Dam; dam with lock
- Cemetery; building
- Washwell; water well; spring
- Mine shaft; set or ore; mine, quarry; gravel pit
- Campground; picnic area; U. S. location monument
- Ruins; cliff dwelling
- Distorted surface: strip mine, lava; sand
- Contours: index; intermediate; supplementary
- Bathymetric contours: index; intermediate
- Stream, lake; perennial; intermittent
- Rapids; large and small; falls, large and small
- Area to be submerged; marsh, swamp
- Land subject to controlled inundation; woodland
- Scrub; mangrove
- Orchard; vineyard