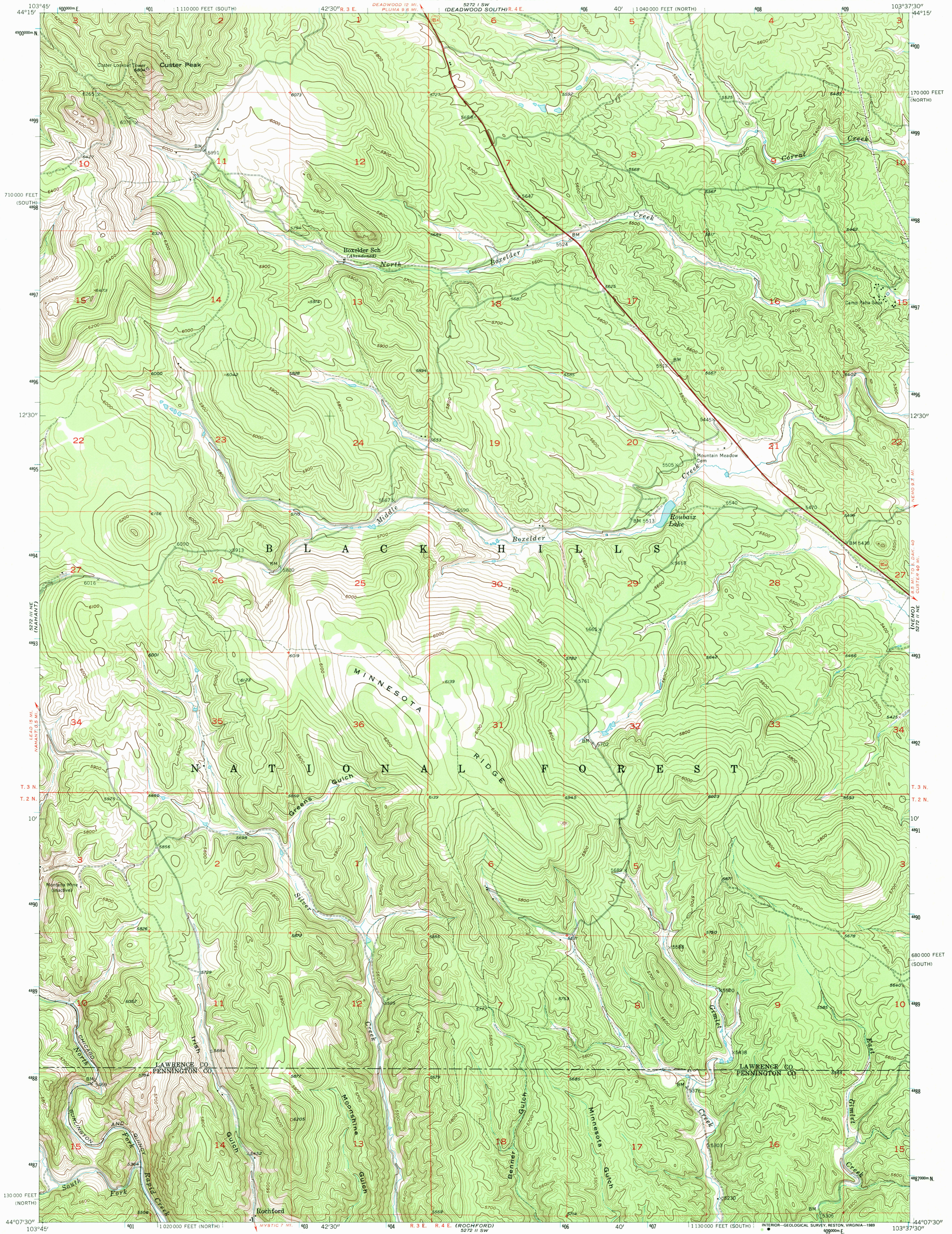
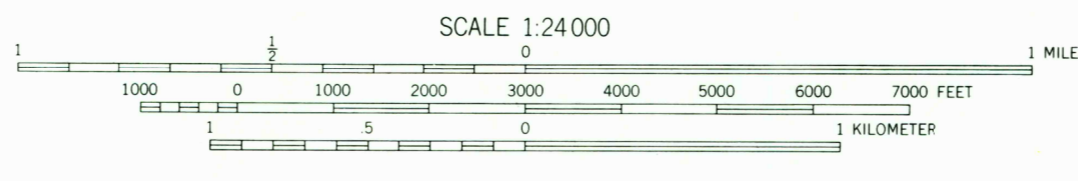
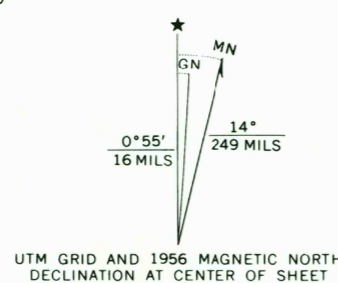


57°21' N E  
103°37' W E

57°21' N E  
103°37' W E

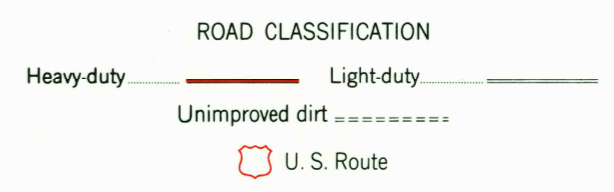


Mapped, edited, and published by the Geological Survey  
Control by USGS and USC&GS  
Topography from aerial photographs by multiplex methods  
Aerial photographs taken 1954. Field check 1956  
Polyconic projection. 1927 North American datum  
10,000-foot grids based on South Dakota coordinate system,  
north and south zones  
1000-meter Universal Transverse Mercator grid ticks,  
zone 13, shown in blue  
To place on the predicted North American Datum 1983,  
move the projection lines 6 meters north and  
42 meters east as shown by dashed corner ticks



CONTOUR INTERVAL 20 FEET  
NATIONAL GEODETIC VERTICAL DATUM OF 1929

THIS MAP COMPLIES WITH NATIONAL MAP ACCURACY STANDARDS  
FOR SALE BY U. S. GEOLOGICAL SURVEY, DENVER, COLORADO 80225  
OR RESTON, VIRGINIA 22092  
A FOLDER DESCRIBING TOPOGRAPHIC MAPS AND SYMBOLS IS AVAILABLE ON REQUEST



MINNESOTA RIDGE, S. DAK.  
4410386-TF-024

RETURN TO:  
USGS AND HISTORICAL MAP ARCHIVES

1956  
DMA 5272 II NW-SERIES V873