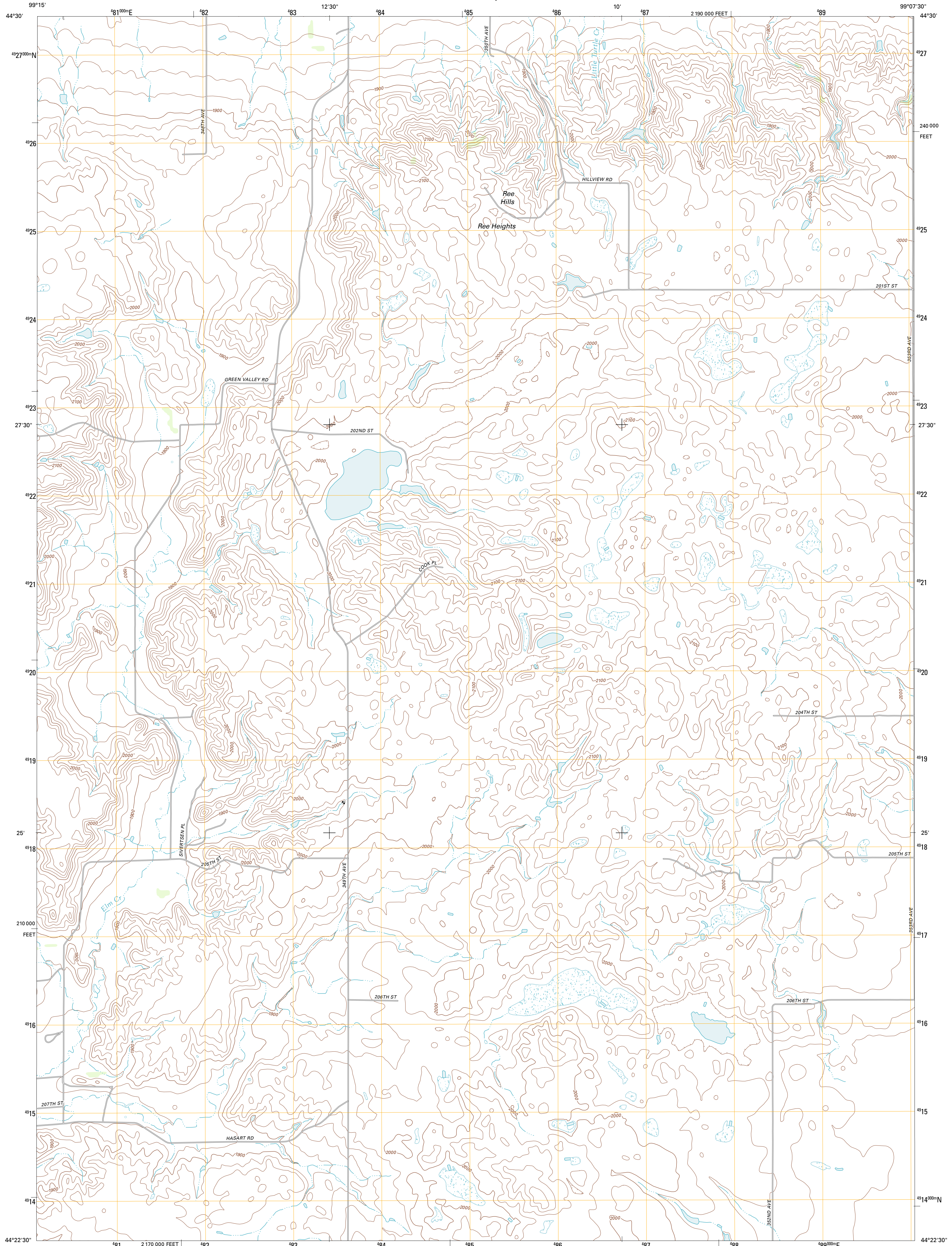




U.S. DEPARTMENT OF THE INTERIOR
U. S. GEOLOGICAL SURVEY

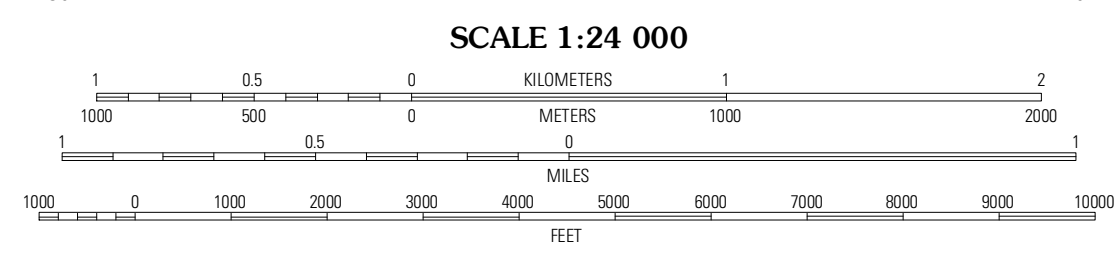
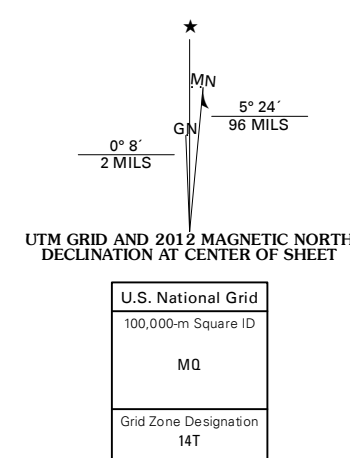


MILLER DALE COLONY NW QUADRANGLE
SOUTH DAKOTA-HAND CO.
7.5-MINUTE SERIES



Produced by the United States Geological Survey
North American Datum of 1983 (NAD83)
World Geodetic System of 1984 (WGS84). Projection and
1 000-meter grid: Universal Transverse Mercator, Zone 14T
10 000-foot ticks: South Dakota Coordinate System of 1983
(north zone)

Imagery.....NAP, August 2010
Roads.....©2006-2011 TomTom
Names.....GNIS, 2011
Hydrography.....National Hydrography Dataset, 2010
Contours.....National Elevation Dataset, 2007
Boundaries.....Census, IBWC, IBC, USGS, 1972 - 2010



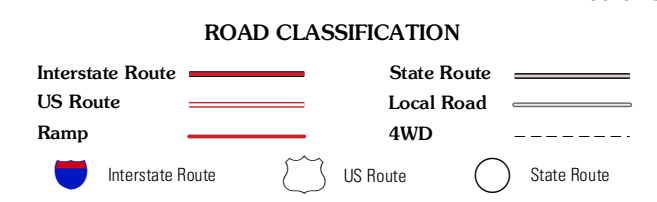
CONTOUR INTERVAL 20 FEET
NORTH AMERICAN VERTICAL DATUM OF 1988
This map was produced to conform with the
National Geospatial Program US Topo Product Standard, 2011.
A metadata file associated with this product is draft version 0.6.3



QUADRANGLE LOCATION

Highmore SE	Ree Heights	Ree Heights SE
Macs Corner NE	Miller Dale Colony NW	Miller Dale Colony
Macs Corner SE	Miller Dale Colony SW	Ames

ADJOINING 7.5' QUADRANGLES



MILLER DALE COLONY NW, SD
2012