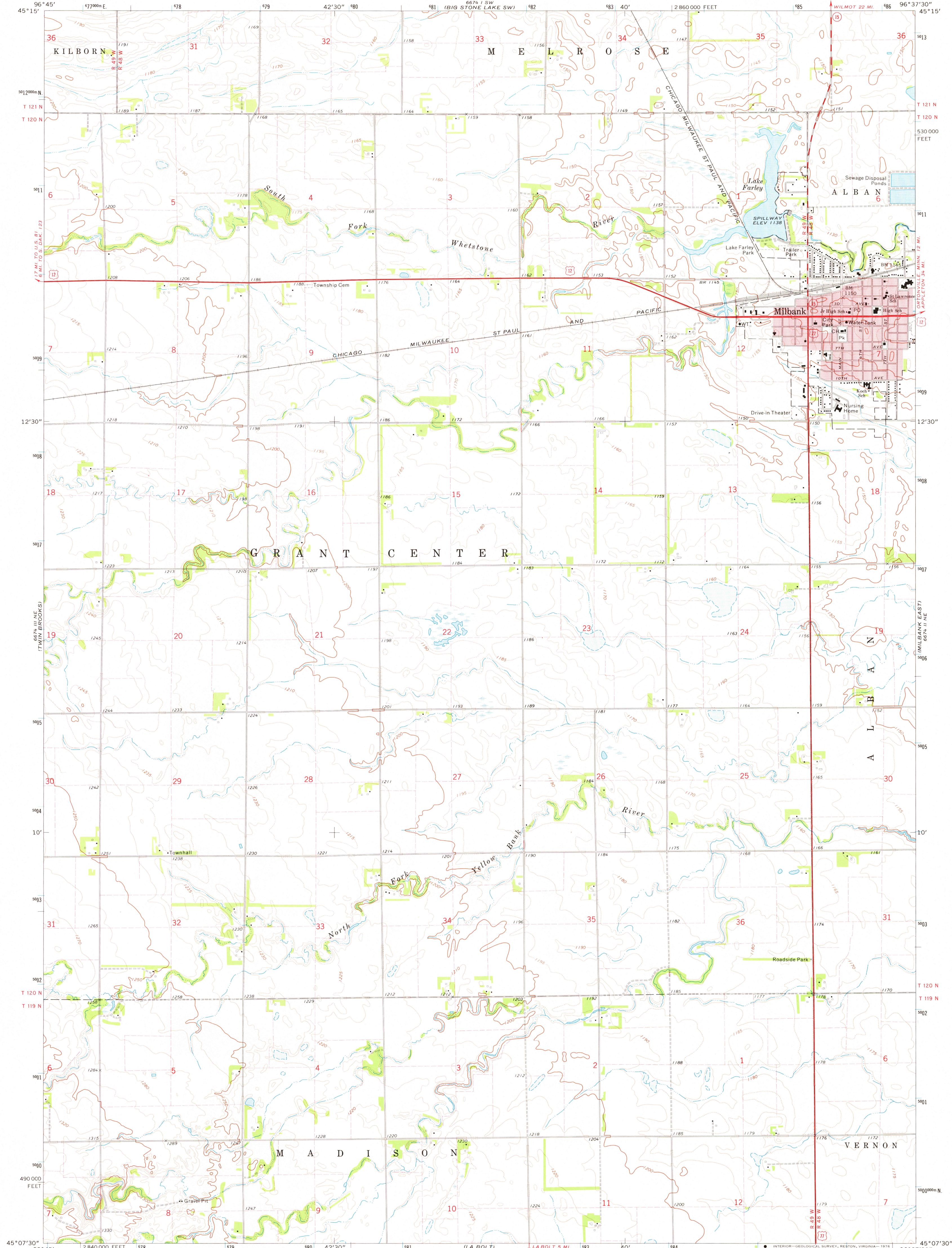
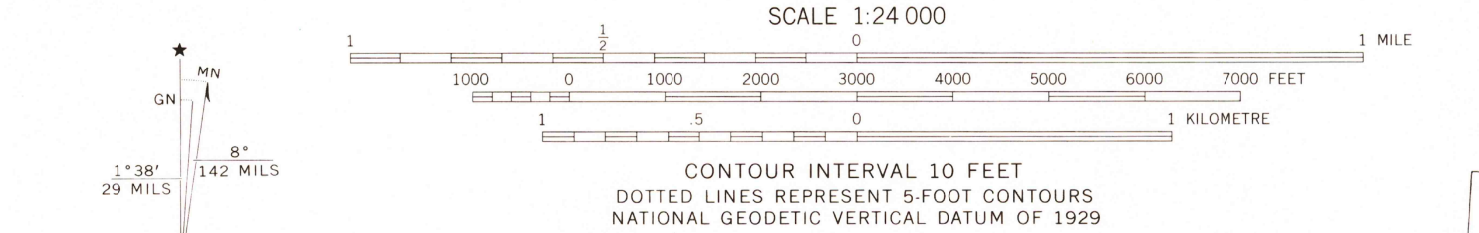


UNITED STATES
DEPARTMENT OF THE INTERIOR
GEOLOGICAL SURVEY

MILBANK WEST QUADRANGLE
SOUTH DAKOTA—GRANT CO.
7.5 MINUTE SERIES (TOPOGRAPHIC)



Mapped, edited, and published by the Geological Survey
Control by USGS and NOS/NOAA
Topography by photogrammetric methods from aerial photographs taken 1972. Field checked 1973
Projection and 10,000-foot grid ticks: South Dakota coordinate system, north zone (Lambert conformal conic)
1000-metre Universal Transverse Mercator grid ticks, zone 14, shown in blue. 1927 North American datum
Red tint indicates area in which only landmark buildings are shown
Fine red dashed lines indicate selected fence and field lines where generally visible on aerial photographs. This information is unchecked



ROAD CLASSIFICATION
Primary highway, hard surface
Secondary highway, hard surface
Light-duty road, hard or improved surface
Unimproved road
Interstate Route
U. S. Route
State Route

THIS MAP COMPLIES WITH NATIONAL MAP ACCURACY STANDARDS
FOR SALE BY U. S. GEOLOGICAL SURVEY, DENVER, COLORADO 80225, OR RESTON, VIRGINIA 22092
A FOLDER DESCRIBING TOPOGRAPHIC MAPS AND SYMBOLS IS AVAILABLE ON REQUEST

MILBANK WEST, S. DAK.
N4507.5—W9637.5/7.5
1973

USGS
Historical File
Topographic Division
AMS 6674 II NW—SERIES V873

JUL 1 2 1976