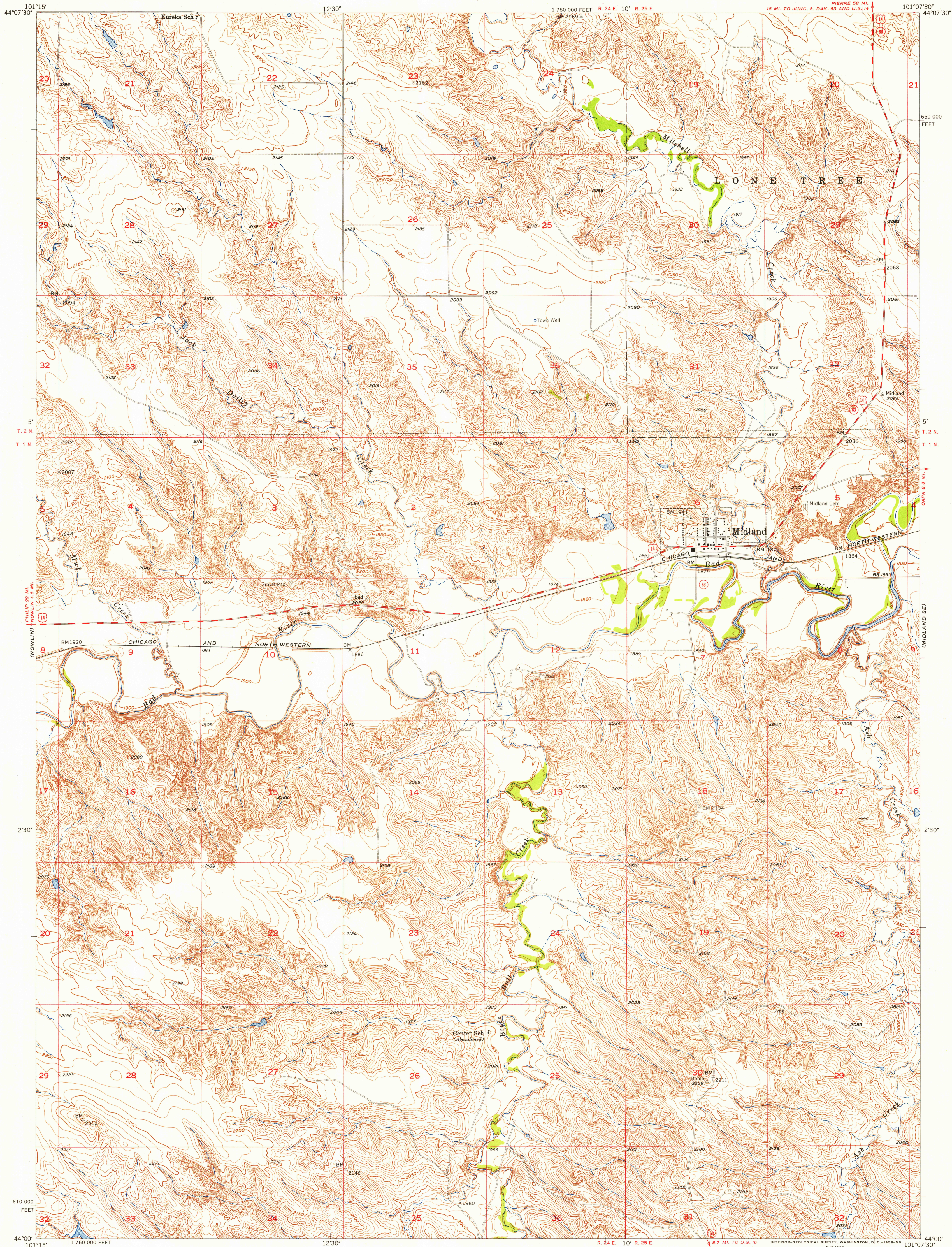
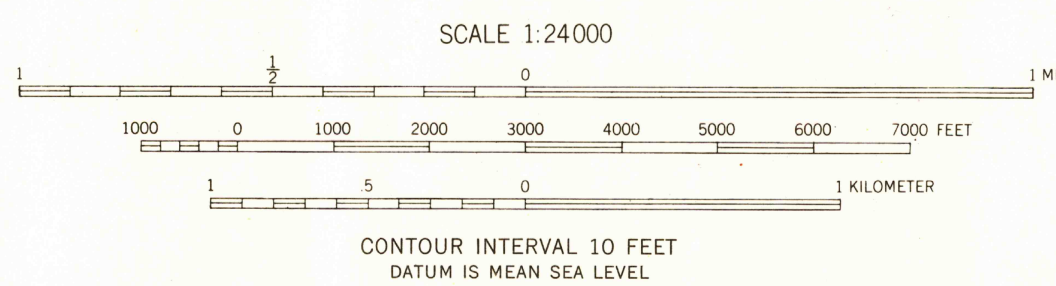
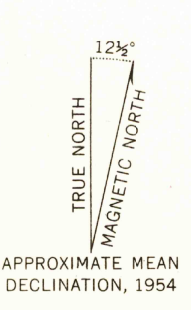


U.S.G.S.
FILE COPY
TOPOGRAPHIC DIVISION



Maped, edited, and published by the Geological Survey as part of the Department of the Interior program for the development of the Missouri River Basin. Control by USGS and USC&GS. Topography from aerial photographs by multiplex methods. Aerial photographs taken 1948. Field check 1954. Polyconic projection. 1927 North American datum. 10,000-foot grid based on South Dakota coordinate system, south zone.

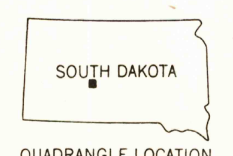


USGS
HISTORICAL FILE
TOPOGRAPHIC DIVISION

ROAD CLASSIFICATION

Heavy-duty	4 LANE 16 LANE	Light-duty
Medium-duty	4 LANE 16 LANE	Unimproved dirt

U. S. Route (square symbol)
State Route (circle symbol)



U.S.G.S.
FILE COPY
TOPOGRAPHIC DIVISION

MIDLAND, S. DAK.
N4400-W10107.5/7.5

THIS MAP COMPLIES WITH NATIONAL MAP ACCURACY STANDARDS
FOR SALE BY U. S. GEOLOGICAL SURVEY, FEDERAL CENTER, DENVER, COLORADO OR WASHINGTON 25, D. C.
A FOLDER DESCRIBING TOPOGRAPHIC MAPS AND SYMBOLS IS AVAILABLE ON REQUEST

1954

MAR 23 1956

2035