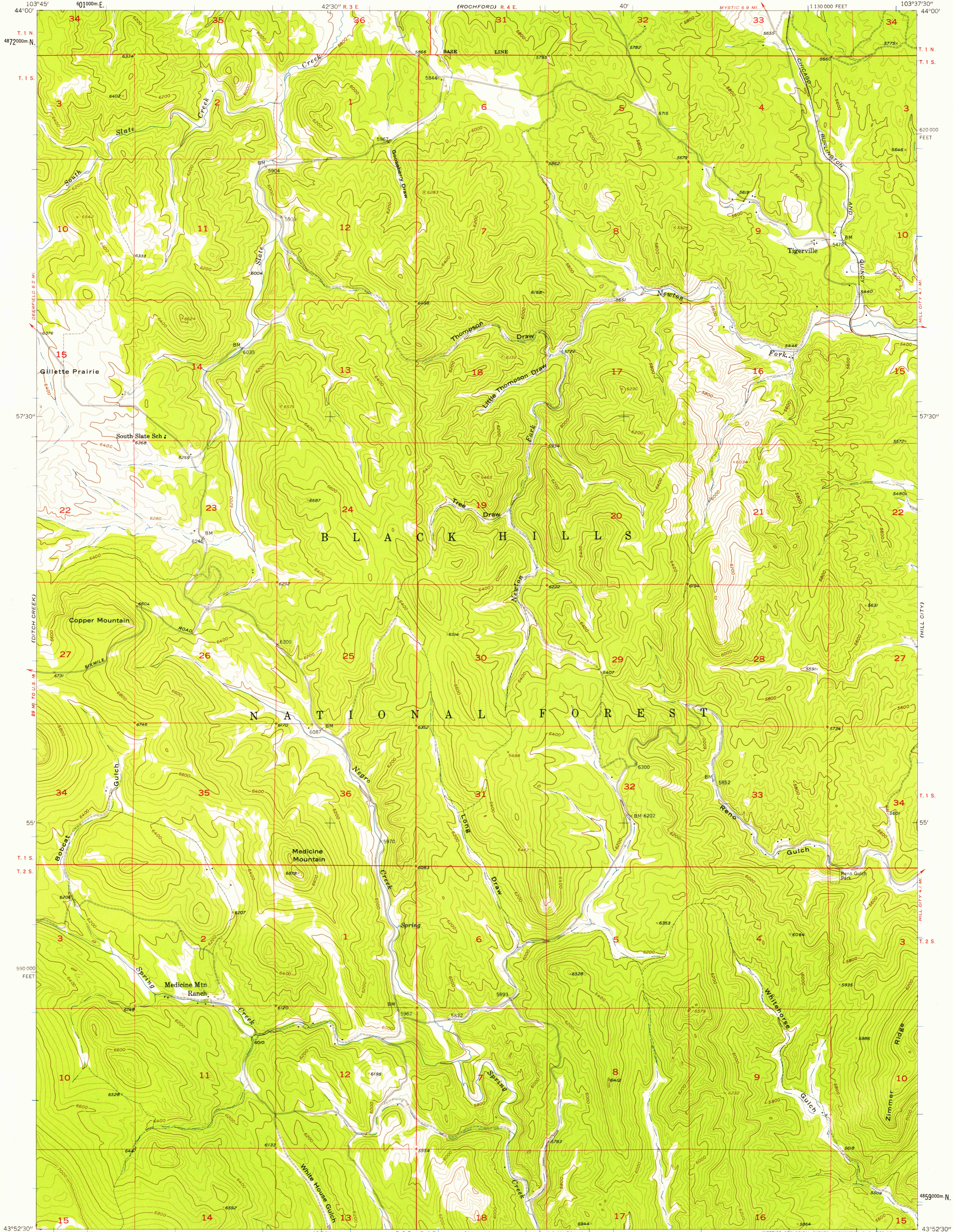
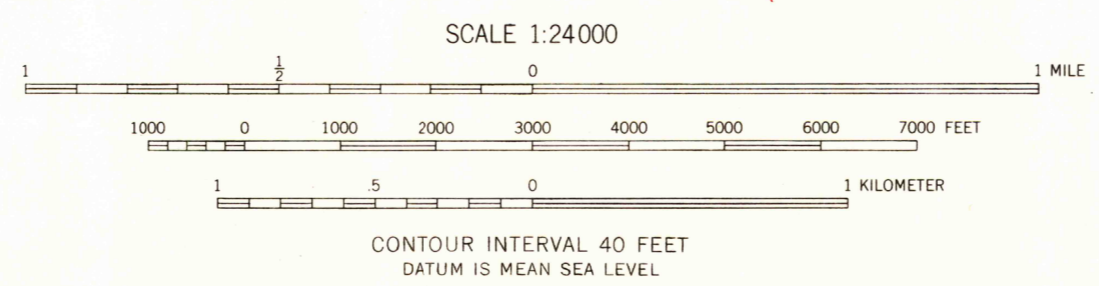
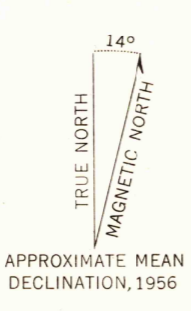


(DEERFIELD)

(SILVER CITY)



Mapped, edited, and published by the Geological Survey
Control by USGS and USC&GS
Topography from aerial photographs by multiplex methods
Aerial photographs taken 1954. Field check 1956
Polyconic projection. 1927 North American datum
10,000-foot grid based on South Dakota coordinate system,
south zone
1000-meter Universal Transverse Mercator grid ticks,
zone 13, shown in blue
Unchecked elevations are shown in brown



USGS
HISTORICAL FILE
TOPOGRAPHIC DIVISION
SOUTH DAKOTA
QUADRANGLE LOCATION

ROAD CLASSIFICATION
Light-duty ————— Unimproved dirt - - - - -

MEDICINE MOUNTAIN, S. DAK.
NW/4 CUSTER 15' QUADRANGLE
N4352.5—W10337.5/7.5

THIS MAP COMPLIES WITH NATIONAL MAP ACCURACY STANDARDS
FOR SALE BY U. S. GEOLOGICAL SURVEY, DENVER 2, COLORADO OR WASHINGTON 25, D. C.
A FOLDER DESCRIBING TOPOGRAPHIC MAPS AND SYMBOLS IS AVAILABLE ON REQUEST

1956

U.S.G.S.
FILE COPY
TOPOGRAPHIC DIVISION

MAR 25 1956

1910