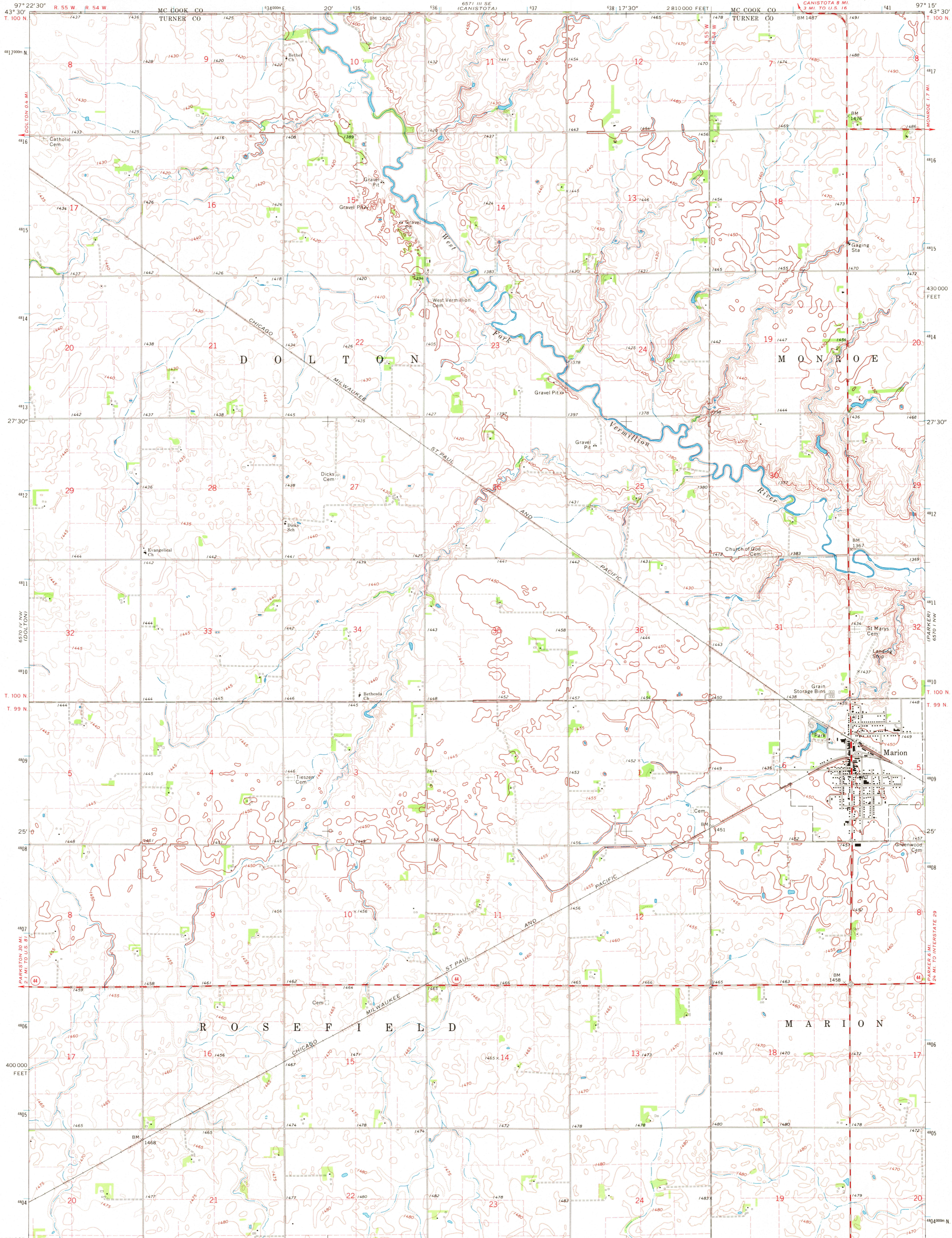
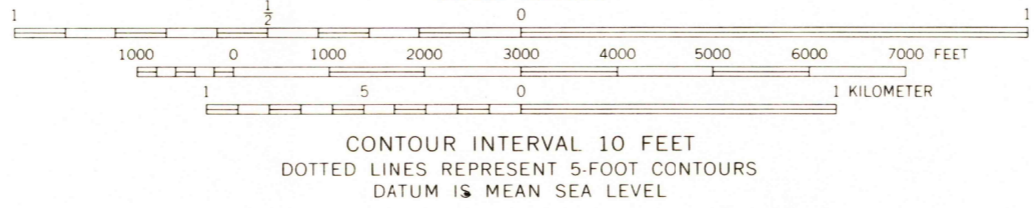


UNITED STATES  
DEPARTMENT OF THE INTERIOR  
GEOLOGICAL SURVEY

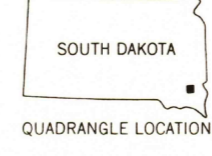
MARION QUADRANGLE  
SOUTH DAKOTA  
7.5 MINUTE SERIES (TOPOGRAPHIC)



Mapped, edited, and published by the Geological Survey as part of the Department of the Interior program for the development of the Missouri River Basin. Control by USGS and USC&GS. Topography by photogrammetric methods from aerial photographs taken 1968. Field checked 1970. Polyconic projection. 1927 North American datum. 10,000-foot grid based on South Dakota coordinate system, south zone 1000-meter Universal Transverse Mercator grid ticks, zone 14, shown in blue. Fine red dashed lines indicate selected fence and field lines where generally visible on aerial photographs. This information is unchecked.



**ROAD CLASSIFICATION**  
Secondary highway, all weather, Light-duty road, all weather, hard surface  
Unimproved road, fair or dry weather  
State Route



MARION, S. DAK.  
N4322.5-W9715.7.5  
1970

JUL 3 1972  
Denver 2000  
USGS HISTORICAL FILE TOPOGRAPHIC DIVISION