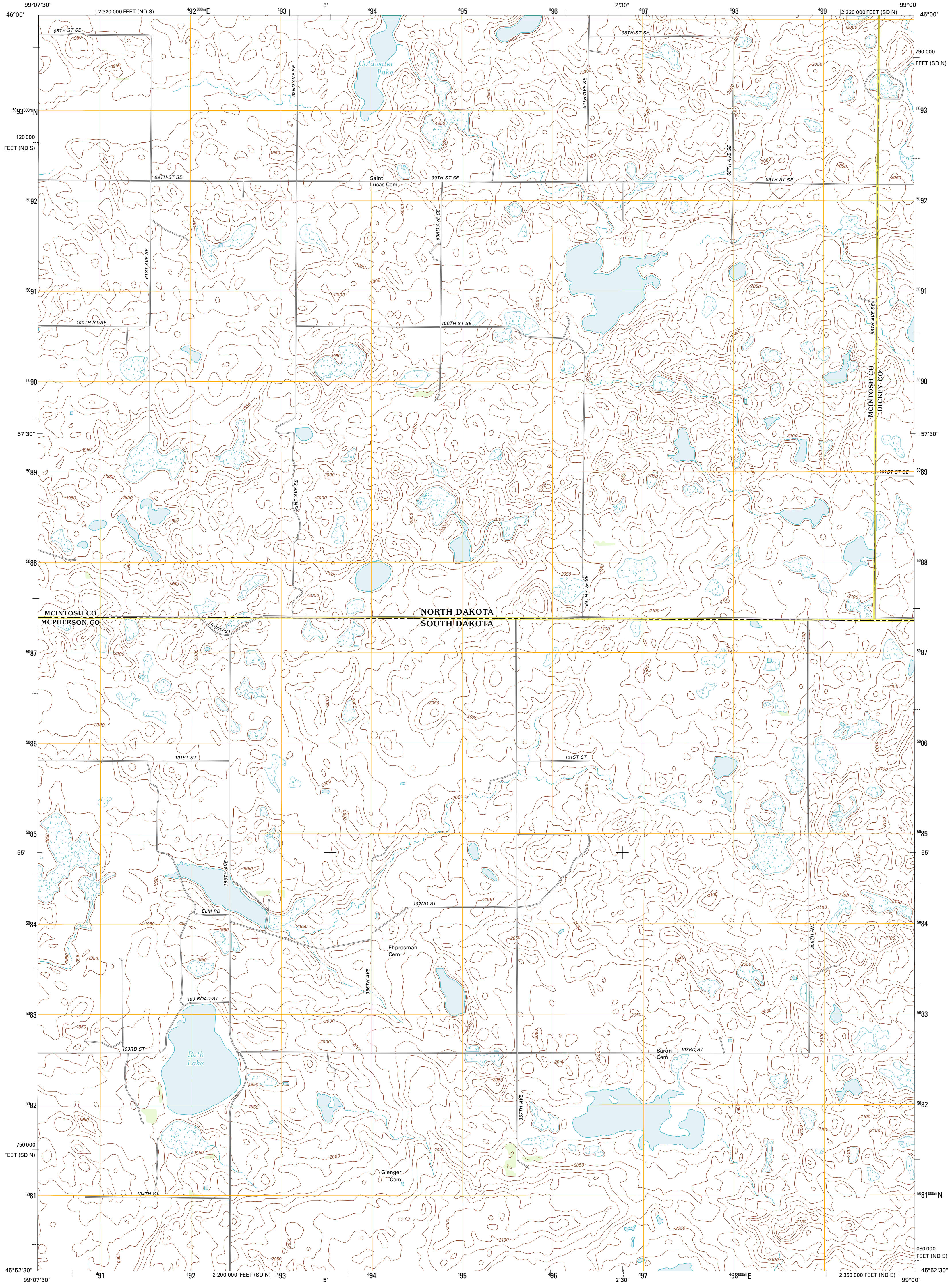




U.S. DEPARTMENT OF THE INTERIOR  
U. S. GEOLOGICAL SURVEY

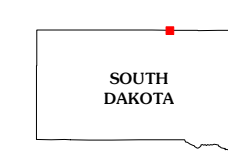
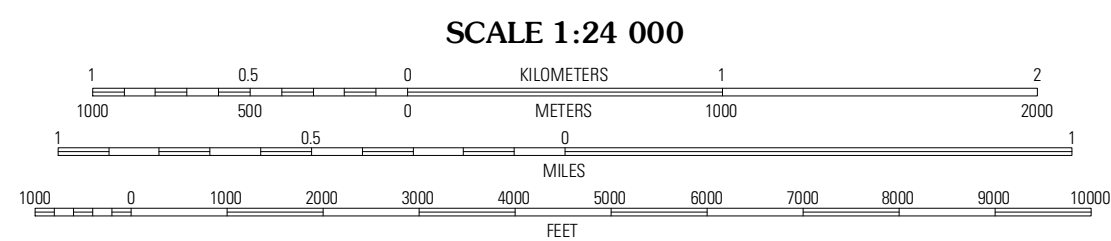
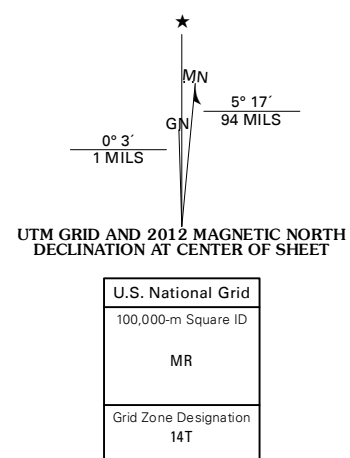


LONG LAKE NE QUADRANGLE  
SOUTH DAKOTA-NORTH DAKOTA  
7.5-MINUTE SERIES



Produced by the United States Geological Survey  
North American Datum of 1983 (NAD83)  
World Geodetic System of 1984 (WGS84). Projection and  
1 000-meter grid: Universal Transverse Mercator, Zone 14T  
(10 000-foot ticks: South Dakota Coordinate System of 1983  
(north zone), North Dakota Coordinate System of 1983 (south  
zone))

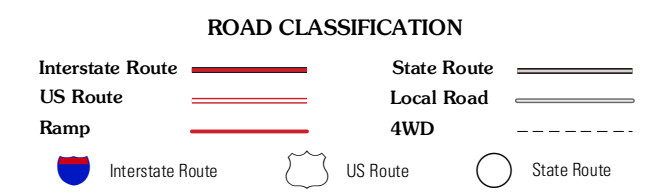
Imagery.....NAIP, July 2010 - August 2010  
Roads.....©2006-2011 TomTom  
Names.....GNIS, 2011  
Hydrography.....National Hydrography Dataset, 2010  
Contours.....National Elevation Dataset, 2009  
Boundaries.....Census, IBWC, IBC, USGS, 1972 - 2010



QUADRANGLE LOCATION

Colliwater Lake SW	Colliwater Lake	Merrickout SW
Long Lake NW	Long Lake NE	Forbes NW
Long Lake	Long Lake SE	Forbes SW

ADJOINING 7.5' QUADRANGLES



CONTOUR INTERVAL 10 FEET  
NORTH AMERICAN VERTICAL DATUM OF 1988

This map was produced to conform with the  
National Geospatial Program US Topo Product Standard, 2011.  
A metadata file associated with this product is draft version 0.6.3

LONG LAKE NE, SD-ND  
2012