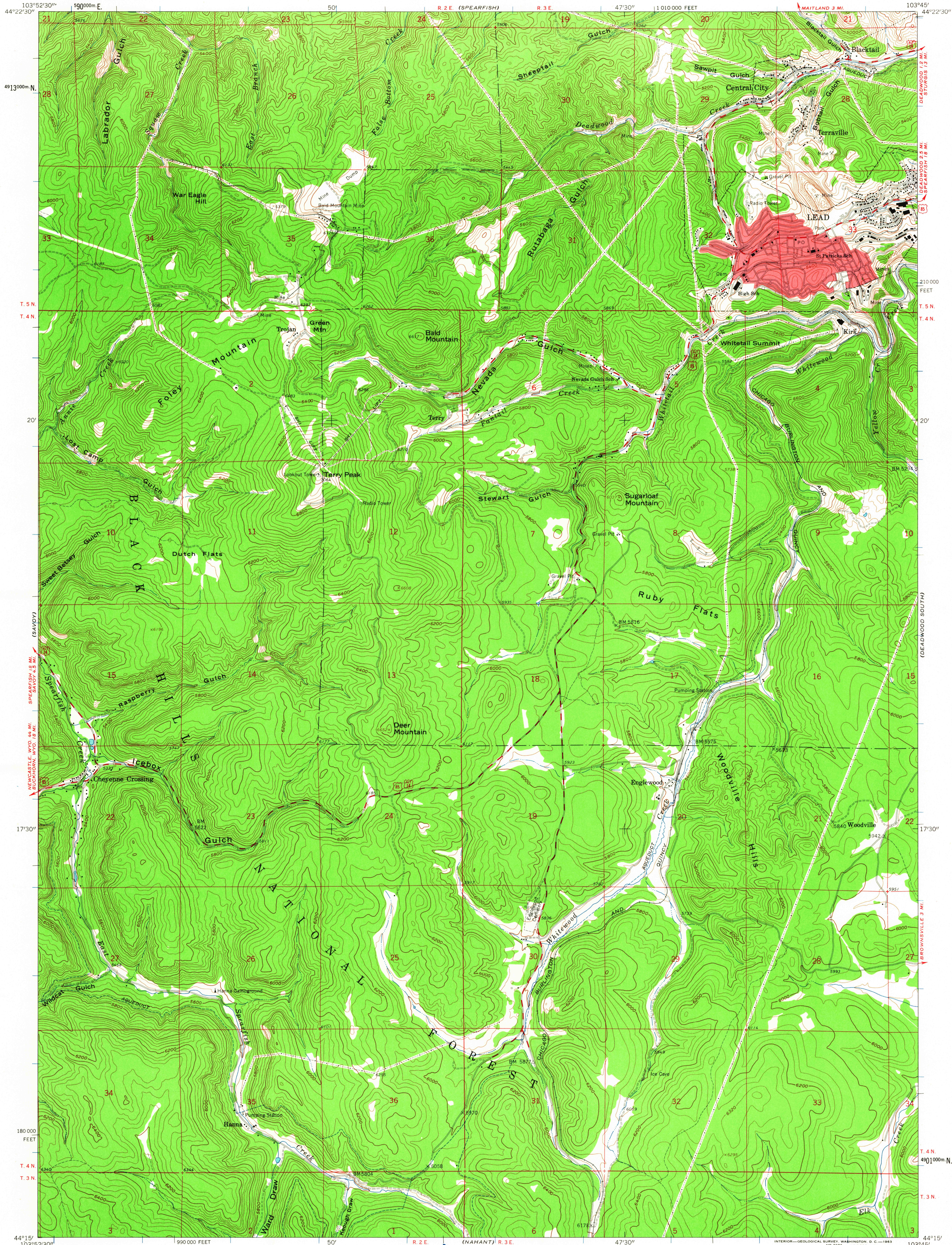
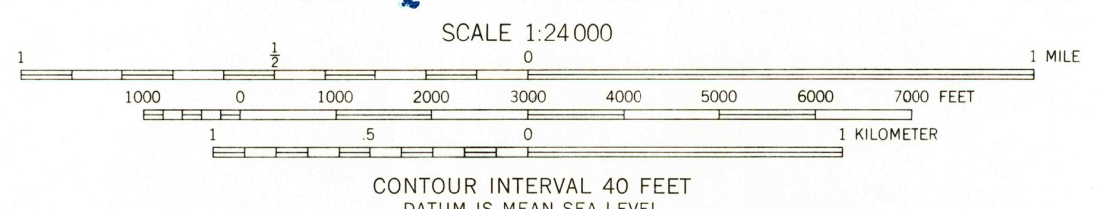


UNITED STATES  
DEPARTMENT OF THE INTERIOR  
GEOLOGICAL SURVEY

LEAD QUADRANGLE  
SOUTH DAKOTA—LAWRENCE CO.  
7.5 MINUTE SERIES (TOPOGRAPHIC)  
SE/4 SPEARFISH 15' QUADRANGLE

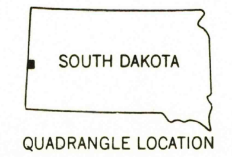


Mapped, edited, and published by the Geological Survey  
Control by USGS and USC&GS  
Topography by photogrammetric methods from aerial  
photographs taken 1958. Field checked 1961  
Polyconic projection. 1927 North American datum  
10,000-foot grid based on South Dakota coordinate system, north zone  
1000-meter Universal Transverse Mercator grid ticks,  
zone 13, shown in blue  
Red tint indicates area in which only landmark buildings are shown



USGS  
HISTORICAL FILE  
TOPOGRAPHIC DIVISION

ROAD CLASSIFICATION  
Medium-duty ——— Light-duty ———  
Unimproved dirt - - - - -  
U.S. Route



U.S.G.S. FILE COPY  
TOPOGRAPHIC DIVISION  
LEAD, S. DAK.  
SE/4 SPEARFISH 15' QUADRANGLE  
N4415-W10345/7.5  
1961

THIS MAP COMPLIES WITH NATIONAL MAP ACCURACY STANDARDS  
FOR SALE BY U. S. GEOLOGICAL SURVEY, DENVER 25, COLORADO OR WASHINGTON 25, D. C.  
A FOLDER DESCRIBING TOPOGRAPHIC MAPS AND SYMBOLS IS AVAILABLE ON REQUEST

SEP 1 1963

2620