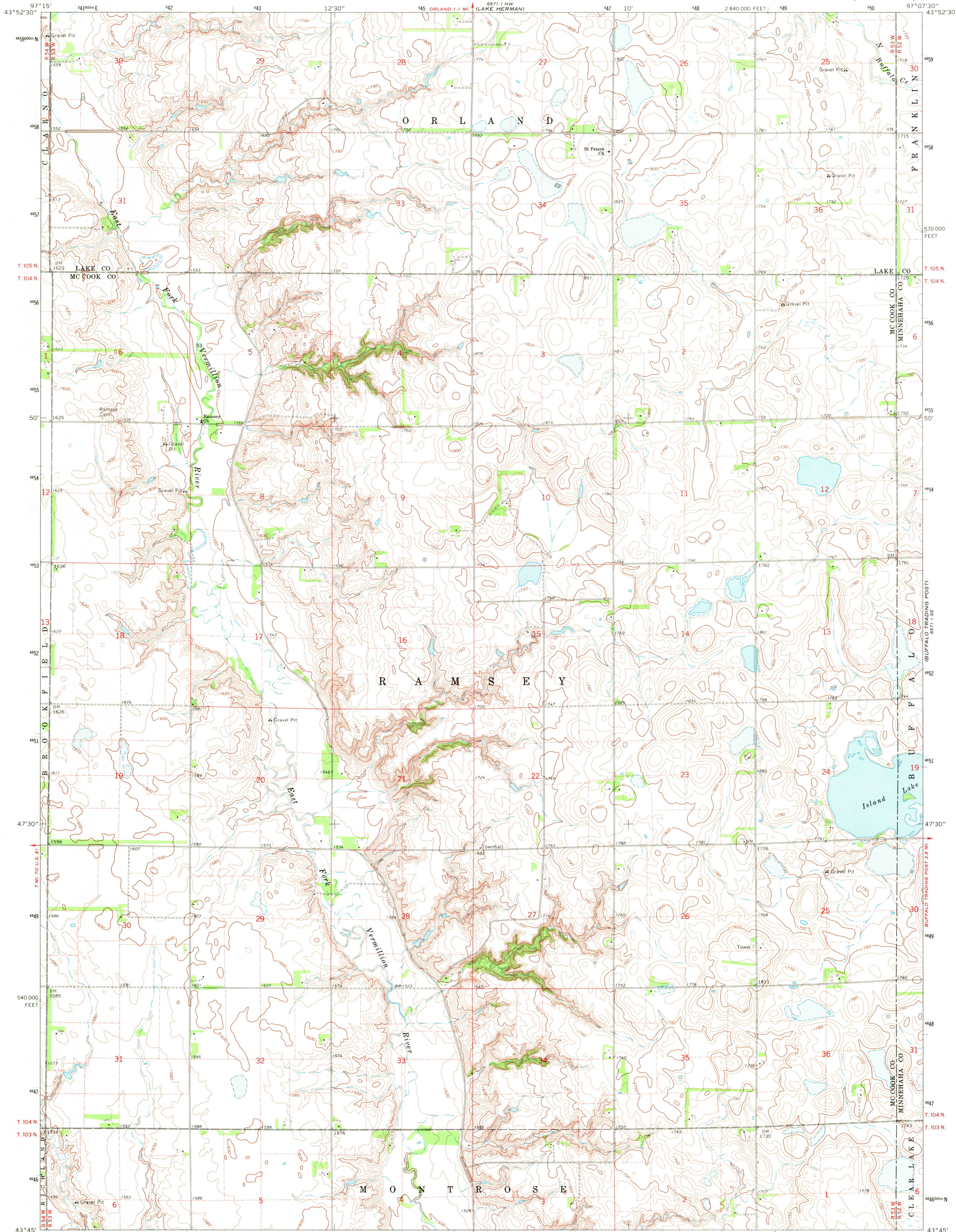
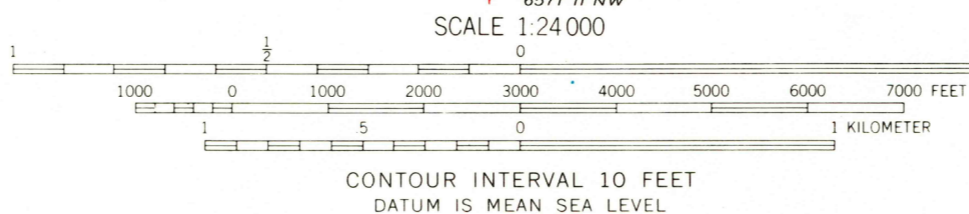


6571 NE
LAKE MADISON



Mapped, edited, and published by the Geological Survey
Control by USGS and USC&GS
Topography by photogrammetric methods from aerial
photographs taken 1965. Field checked 1968
Polyconic projection. 1927 North American datum
10,000-foot grid based on South Dakota coordinate system, south zone
1000-meter Universal Transverse Mercator grid ticks,
zone 14, shown in blue
Fine red dashed lines indicate selected fence and field lines where
generally visible on aerial photographs.
This information is unchecked



USGS
HISTORICAL FILE
TOPOGRAPHIC DIVISION

ROAD CLASSIFICATION
Light-duty road, all weather, improved surface
Unimproved road, fair or dry weather



U.S.G.S. LAKE MADISON SW, S. DAK.
N4345—W9707.5/7.5

FILE COPY
TOPOGRAPHIC DIVISION

1968
AMS 6571 | SW—SERIES V873

SEP 24 1970

2280