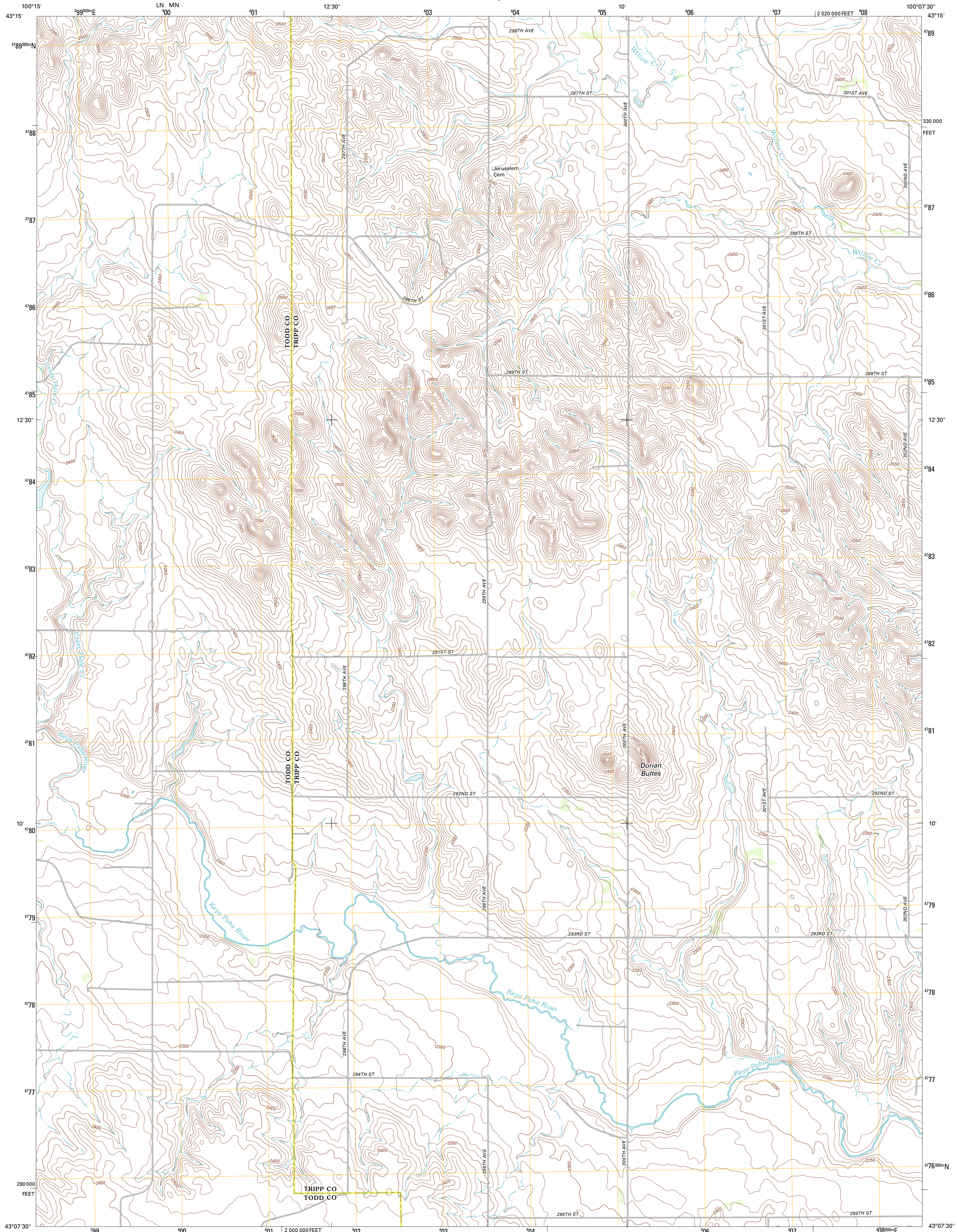




U.S. DEPARTMENT OF THE INTERIOR
U. S. GEOLOGICAL SURVEY

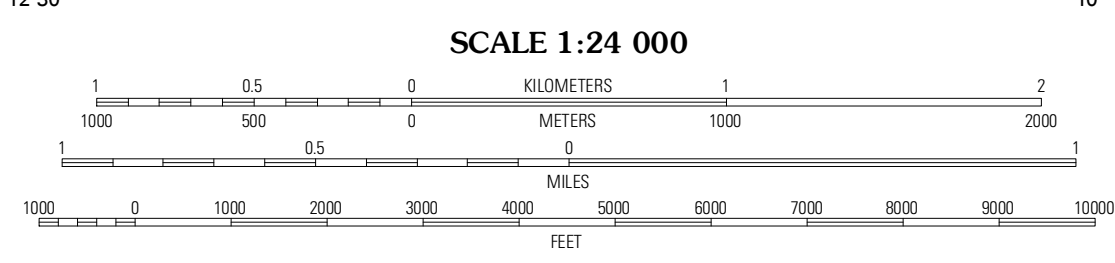
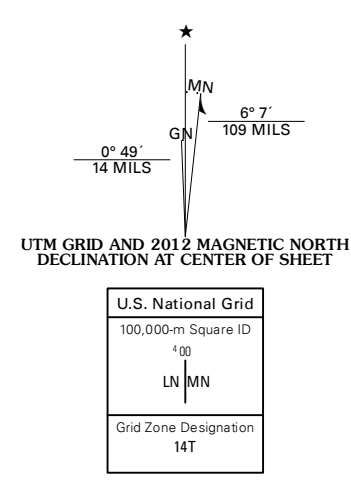


KEYAPAHA NW QUADRANGLE
SOUTH DAKOTA
7.5-MINUTE SERIES



Produced by the United States Geological Survey
North American Datum of 1983 (NAD83)
World Geodetic System of 1984 (WGS84) Projection and
1 000-meter grid; Universal Transverse Mercator, Zone 14T
10 000-foot ticks; South Dakota Coordinate System of 1983
(south zone)

Imagery.....NAP, July 2010
Roads.....©2006-2011, TomTom
Names.....GNIS, 2011
Hydrography.....National Hydrography Dataset, 2010
Contours.....National Elevation Dataset, 2012
Boundaries.....Census, IBWC, IBC, USGS, 1972-2010



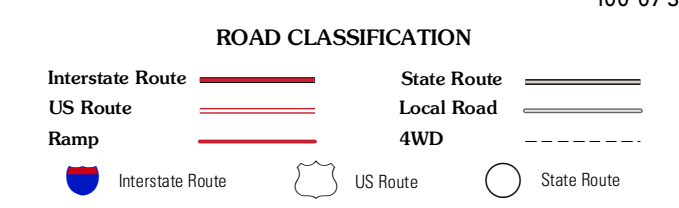
SCALE 1:24 000
CONTOUR INTERVAL 10 FEET
NORTH AMERICAN VERTICAL DATUM OF 1988
This map was produced to conform with the
National Geospatial Program US Topo Product Standard, 2011.
A metadata file associated with this product is draft version 0.6.3



QUADRANGLE LOCATION

| | | |
|------------------|-------------|-------------|
| Okreek SE | Wilton SW | Wilton SE |
| Hidden Timber NE | Keyapaha NW | Clearfield |
| Hidden Timber SE | Keyapaha SE | Keyapaha SE |

ADJOINING 7.5 QUADRANGLES



KEYAPAHA NW, SD
2012