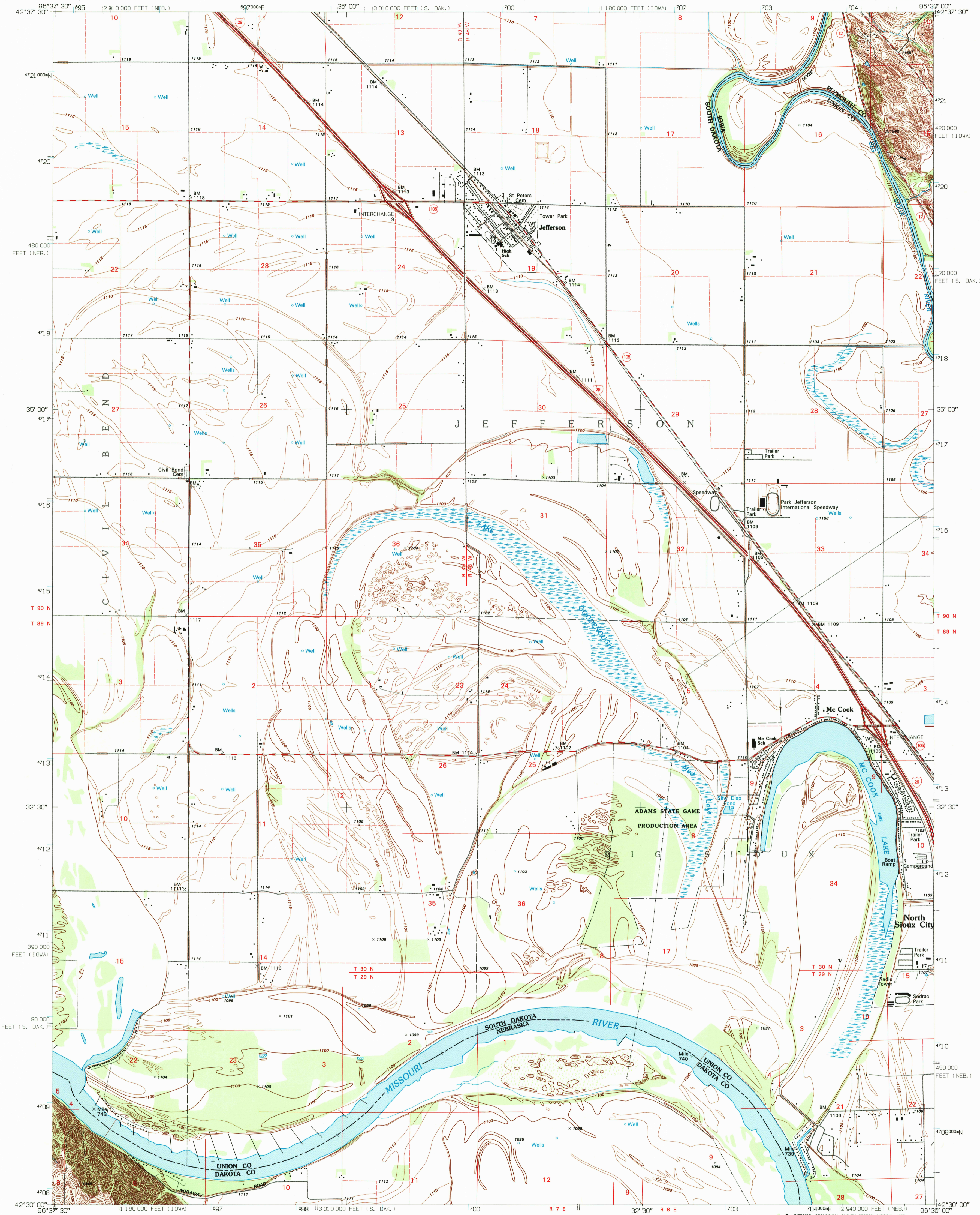
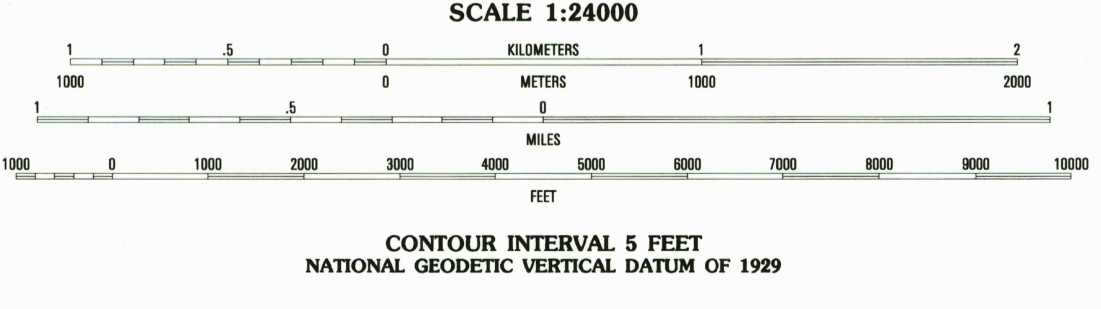
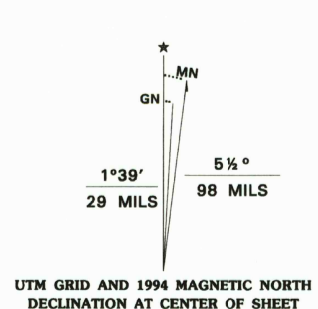


UNITED STATES  
DEPARTMENT OF THE INTERIOR  
GEOLOGICAL SURVEY

JEFFERSON QUADRANGLE  
SOUTH DAKOTA-NEBRASKA-IOWA  
7.5 MINUTE SERIES (TOPOGRAPHIC)



Produced by the United States Geological Survey  
Control by USGS and NOS/NOAA  
Topography by photogrammetric methods from aerial photographs taken 1961 and planimetric surveys 1963. Revised from aerial photographs taken 1990-91. Field checked 1993. Map edited 1994  
North American Datum of 1927 (NAD 27). Projection and blue 1000-meter ticks: Universal Transverse Mercator, zone 15 10 000-foot ticks: South Dakota coordinate system, south zone, Nebraska coordinate system, north zone, and Iowa coordinate system, north zone  
North American Datum of 1983 (NAD 83) is shown by dashed corner ticks. The values of the shift between NAD 27 and NAD 83 for 7.5-minute intersections are obtainable from National Geodetic Survey NADCON software  
There may be private inholdings within the boundaries of the National or State reservations shown on this map  
Fine red dashed lines indicate selected fence and field lines where generally visible on aerial photographs. This information is unchecked



ROAD CLASSIFICATION

Primary highway  
hard surface ..... Light-duty road, hard or improved surface .....  
Secondary highway  
hard surface ..... Unimproved road .....

Interstate Route U.S. Route State Route

1	2	3	1 Elk Point
4	5	6	2 Elk Point NE
7	8	9	3 Millerville
		10	4 Ponca
		11	5 Sioux City North
		12	6 Waterbury
		13	7 Jackson
		14	8 Sioux City South

JEFFERSON, S. DAK.-NEBR.-IOWA  
42096-E5-TF-024  
1994

USGS AND HISTORICAL  
MAP ARCHIVES  
APR 24 1995  
REC'D FILE COPY

THIS MAP COMPLIES WITH NATIONAL MAP ACCURACY STANDARDS  
FOR SALE BY U.S. GEOLOGICAL SURVEY, DENVER, COLORADO 80225, OR RESTON, VIRGINIA 22092  
AND IOWA GEOLOGICAL SURVEY, IOWA CITY, IOWA 52240  
A FOLDER DESCRIBING TOPOGRAPHIC MAPS AND SYMBOLS IS AVAILABLE ON REQUEST