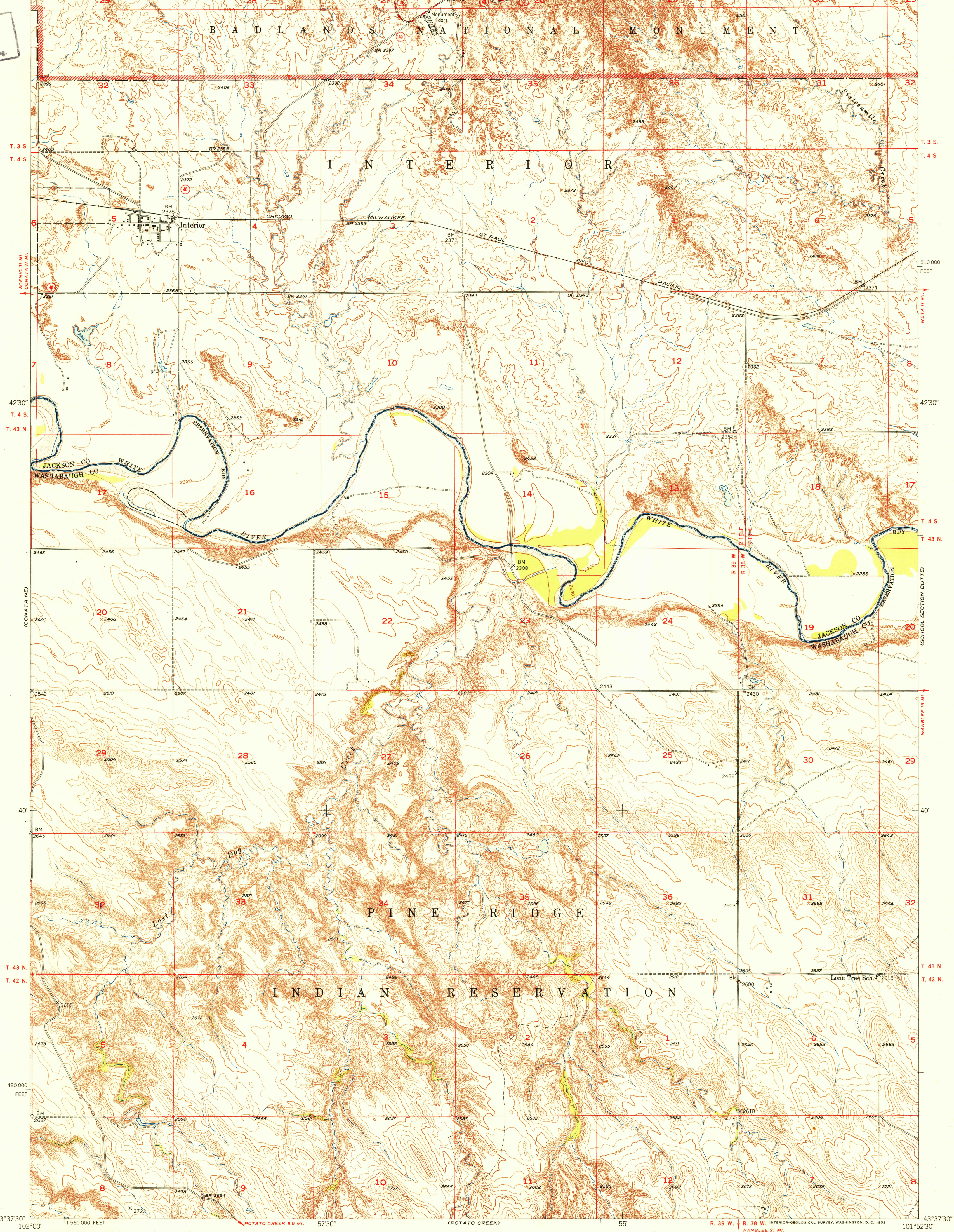
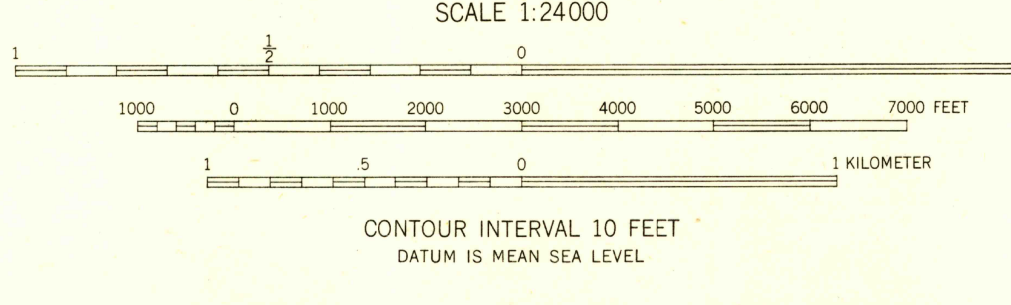


102°00' 43°45' 57°30' RAPID CITY 88 MI WALL 30 MI KADOKA 29 MI 31 MI TO U.S. 16 55' R. 18 E. R. 19 E. 1°59'00" FEET 101°52'30" 43°45'

U.S.G.S.
FILE COPY
Imposition and Printing



Mapped, edited, and published by the Geological Survey as part of the Department of the Interior program for the development of the Missouri River Basin Control by USGS and USC&GS
Topography from aerial photographs by multiplex methods
Aerial photographs taken 1948. Field check 1950
Polyconic projection. 1927 North American datum
10,000-foot grid based on South Dakota coordinate system, south zone



ROAD CLASSIFICATION
Heavy-duty 4 LANE 6 LANE Light-duty
Medium-duty 4 LANE 6 LANE Unimproved dirt
U.S. Route State Route

USGS
HISTORICAL FILE
TOPOGRAPHIC DIVISION

U.S.G.S.
FILE COPY
Imposition and Printing

INTERIOR, S. DAK.
N4337.5-W10152.5/7.5
1950

THIS MAP COMPLIES WITH NATIONAL MAP ACCURACY STANDARDS
FOR SALE BY U.S. GEOLOGICAL SURVEY, FEDERAL CENTER, DENVER, COLORADO OR WASHINGTON 25, D. C.
A FOLDER DESCRIBING TOPOGRAPHIC MAPS AND SYMBOLS IS AVAILABLE ON REQUEST