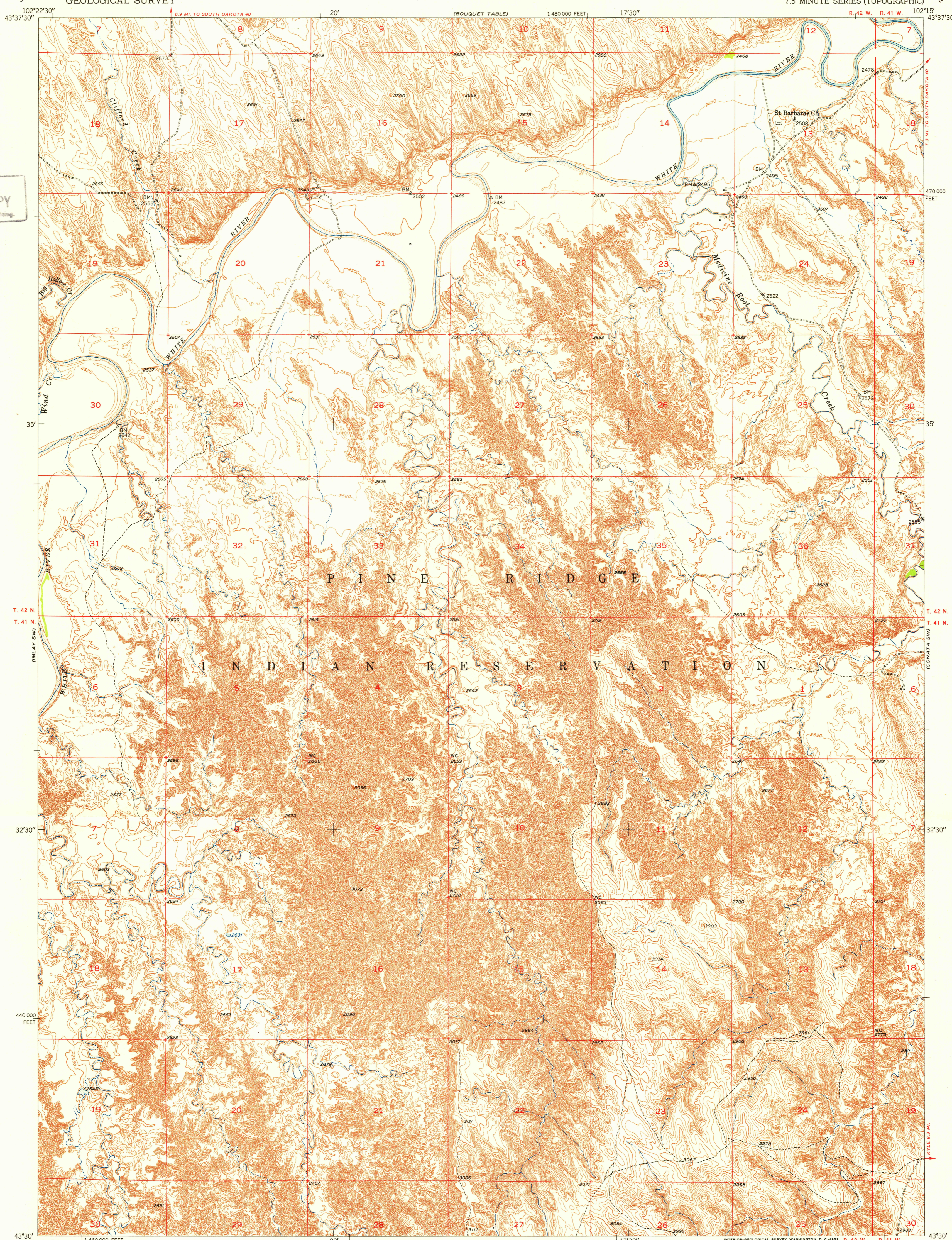
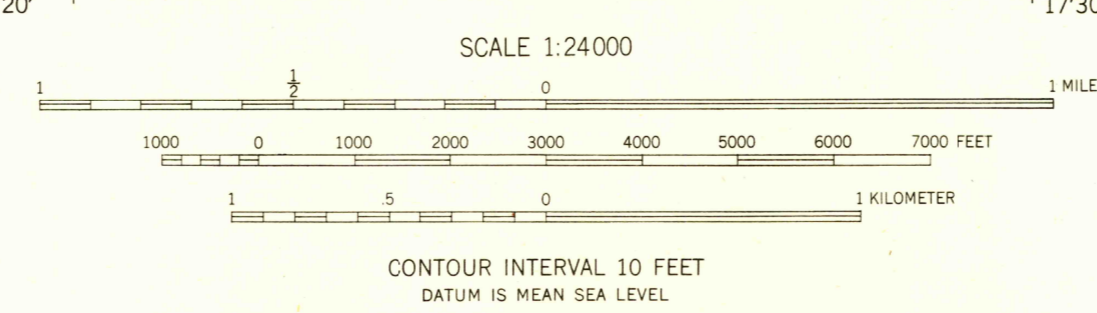
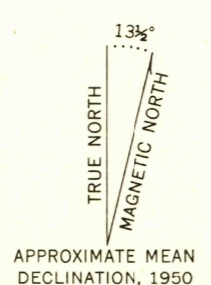


U.S.G.S.
FILE COPY
Inspection and Editing



Mapped, edited, and published by the Geological Survey as part of the Department of the Interior program for the development of the Missouri River Basin Control by USGS and USC&GS
Topography from aerial photographs by multiplex methods
Aerial photographs taken 1948. Field check 1950
Polyconic projection. 1927 North American datum
10,000-foot grid based on South Dakota coordinate system, south zone



USGS
HISTORICAL FILE
TOPOGRAPHIC DIVISION

ROAD CLASSIFICATION

Heavy-duty	4 LANE	Light-duty	2 LANE
Medium-duty	2 LANE	Unimproved dirt
U. S. Route	□	State Route	○

U.S.G.S.
FILE COPY
Inspection and Editing

THIS MAP COMPLIES WITH NATIONAL MAP ACCURACY STANDARDS
FOR SALE BY U. S. GEOLOGICAL SURVEY, FEDERAL CENTER, DENVER, COLORADO OR WASHINGTON 25, D. C.
A FOLDER DESCRIBING TOPOGRAPHIC MAPS AND SYMBOLS IS AVAILABLE ON REQUEST

IMLAY SE, S. DAK.
N4330-W10215/7.5
1950