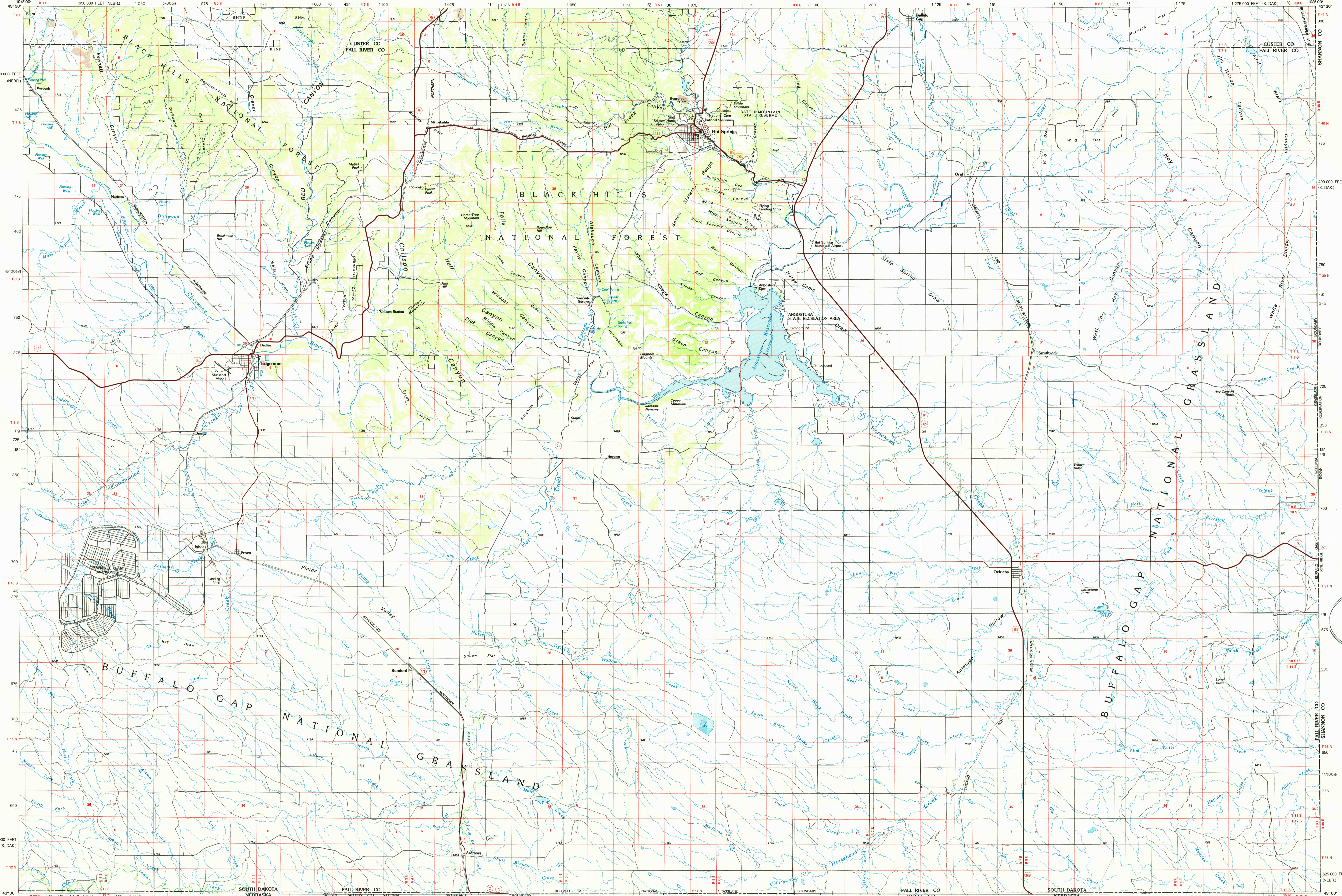


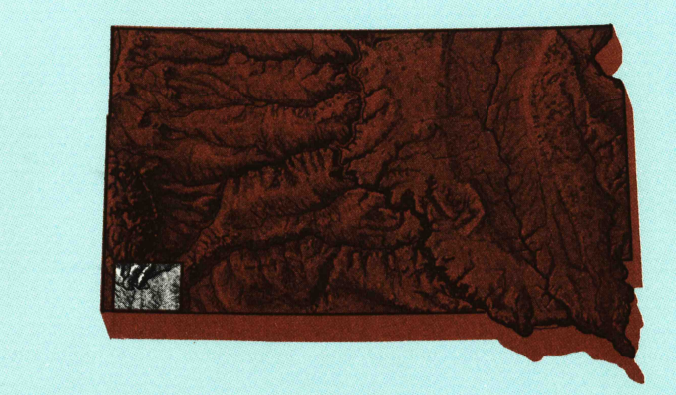
HOT SPRINGS, SOUTH DAKOTA-NEBRASKA

30 X 60 MINUTE SERIES (PLANIMETRIC)



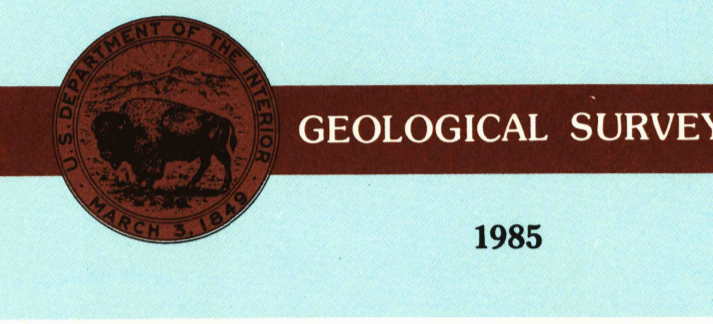
Hot Springs SOUTH DAKOTA-NEBRASKA

1:100 000-scale planimetric map



30 X 60 MINUTE QUADRANGLE SHOWING

- Elevations in meters
- Highways, roads and other manmade structures
- Water features
- Woodland areas
- Geographic names



Produced by the United States Geological Survey
 Compiled from USGS 1:24 000-scale topographic maps dated 1950-1982. Planimetry revised from aerial photographs taken 1981-82 and other source data. Revised information not field checked. Map edited 1985.
 Projection and 10 000-meter grid, zone 13, Universal Transverse Mercator
 25 000-foot grid ticks based on South Dakota coordinate system, south zone and Nebraska coordinate system, north zone 1927 North American Datum
 To place on the predicted North American Datum 1983, move the projection lines 7 meters north and 42 meters east.
 There may be private inholdings within the boundaries of the National or State reservations shown on this map.

NATIONAL GEOGRAPHIC VERTICAL DATUM OF 1929 ELEVATIONS SHOWN TO THE NEAREST METER

THIS MAP COMPLES WITH NATIONAL MAP ACCURACY STANDARDS

Meters	Feet
1	3.2808
2	6.5617
3	9.8425
4	13.1234
5	16.4042
6	19.6850
7	22.9659
8	26.2467
9	29.5275
10	32.8084

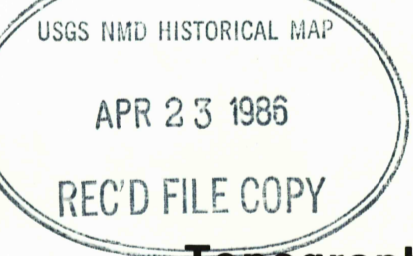
To convert meters to feet multiply by 3.2808
 To convert feet to meters multiply by 0.3048

Declination	Miles	Meters
1°	1.7	2.7
2°	3.4	5.4
3°	5.1	8.1
4°	6.8	10.8
5°	8.5	13.5
6°	10.2	16.2
7°	11.9	18.9
8°	13.6	21.6
9°	15.3	24.3
10°	17.0	27.0

UTM grid convergence (CM) and false magnetic declination (MM) at center of map. Diagram is approximate.

Adjoining Maps	1	2	3
1	Neuacota		
2	Mount Rushmore		
3	Wall		
4	Laurel Creek		
5	Pine Ridge		
6	Laurel		
7	Crawford		
8	Gordon		

FOR SALE BY U.S. GEOLOGICAL SURVEY DENVER, COLORADO 80225, OR RESTON, VIRGINIA 22092



Topographic Map Symbols

- Primary highway, hard surface
- Secondary highway, hard surface
- Light duty road, principal street, hard or improved surface
- Other road or street, trail
- Route marker: interstate; U.S. State
- Railroad: standard gage; narrow gage
- Bridge: overpass; underpass
- Tunnel: road; railroad
- Built up area; locality; elevation
- Airport; landing field; landing strip
- National boundary
- State boundary
- County boundary
- National or State reservation boundary
- Land grant boundary
- U.S. public lands survey: range, township, section
- Range, township, section line: constructed
- Power transmission line: pipeline
- Dam; dam with lock
- Cemetery; building
- Windmill; water well; spring
- Mine shaft; adit or cave; mine, quarry; gravel pit
- Campground; picnic area; U.S. location monument
- Ruin; cliff dwelling
- Distorted surface: strip mine, lava, sand
- Contours: index; intermediate; supplementary
- Bathymetric contours: index; intermediate
- Stream, lake, perennial; intermittent
- Ripple, large and small; tide, heavy or small
- Area to be submerged; marsh, swamp
- Land subject to controlled inundation; woodland
- Scrub; mangrove
- Orchard; vineyard

A pamphlet describing topographic maps is available on request

SCALE 1:100 000
 1 CENTIMETER ON THE MAP REPRESENTS 1 KILOMETER ON THE GROUND

HOT SPRINGS, SOUTH DAKOTA-NEBRASKA 43103-A1-PL-100