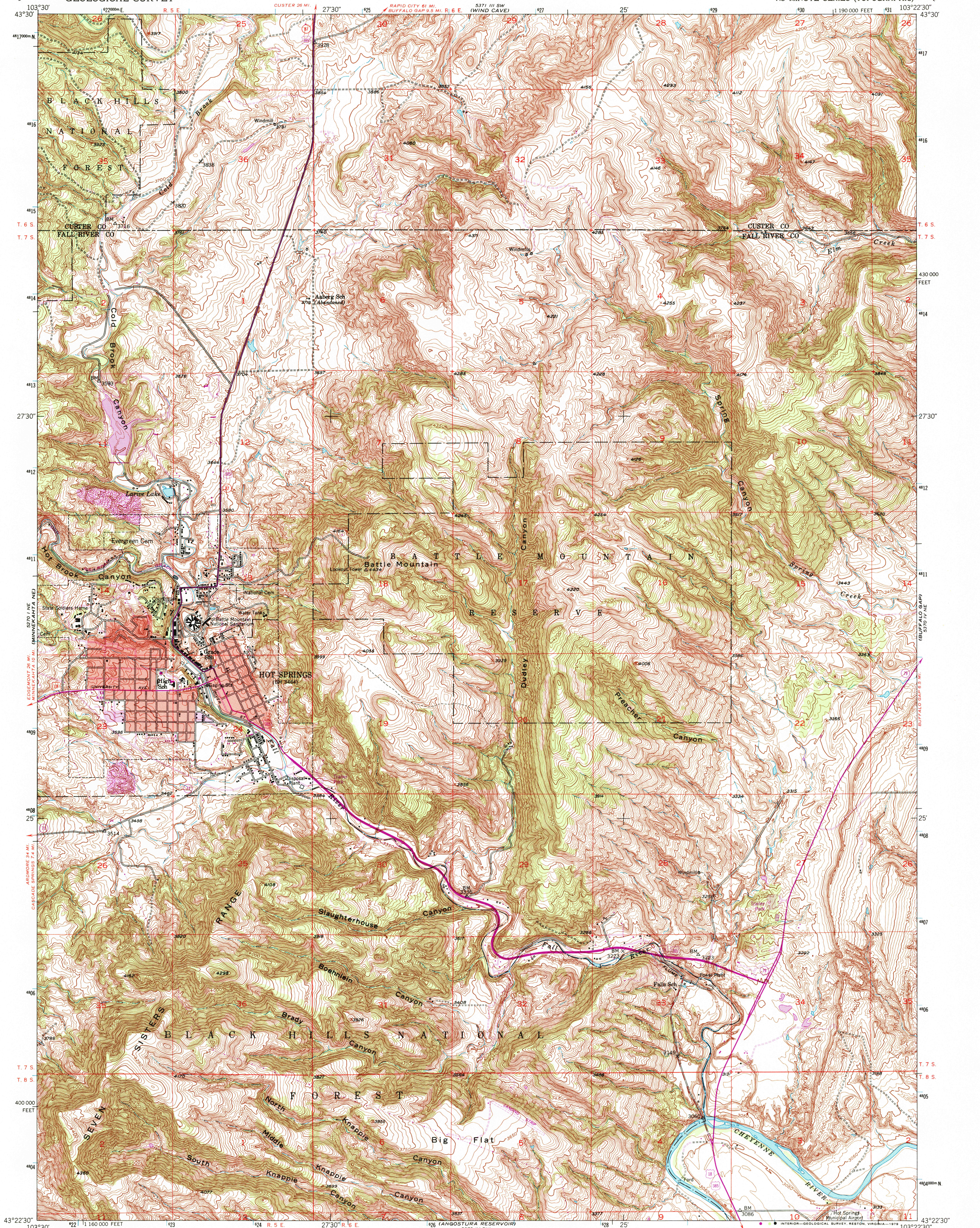
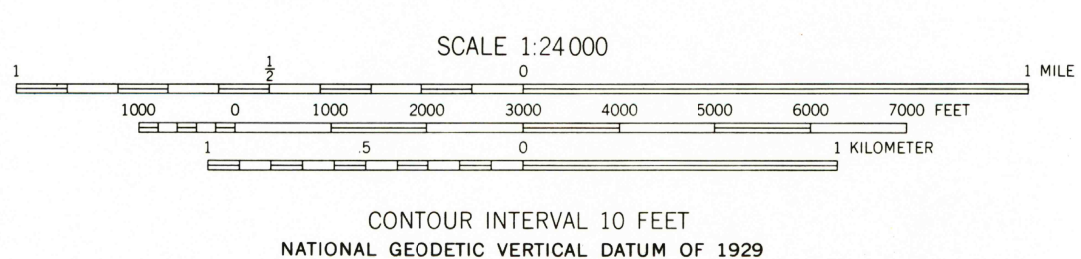
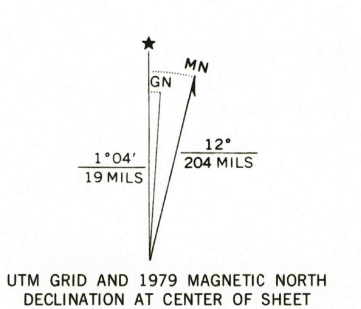


537 1/2 SE
BOLAND RIDGE

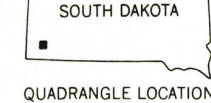
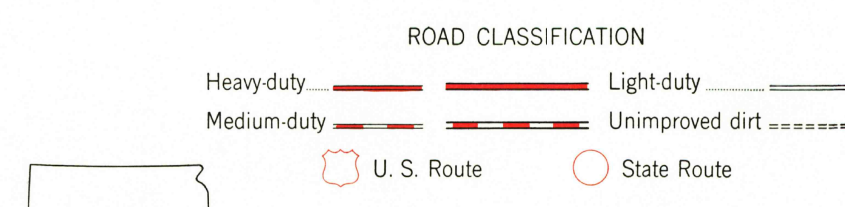


Mapped, edited, and published by the Geological Survey as part of the Department of the Interior program for the development of the Missouri River Basin
Control by USGS and US&GS
Topography from aerial photographs by multiplex methods
Aerial photographs taken 1948. Field check 1950
Polyconic projection. 1927 North American datum
10,000-foot grid based on South Dakota coordinate system, south zone
Red tint indicates areas in which only landmark buildings are shown
1000-meter Universal Transverse Mercator grid ticks, zone 13, shown in blue



CONTOUR INTERVAL 10 FEET
NATIONAL GEODETIC VERTICAL DATUM OF 1929

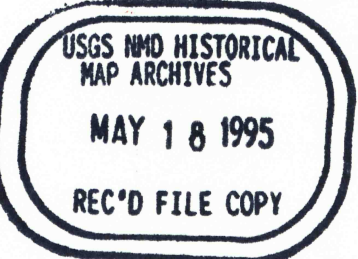
THIS MAP COMPLIES WITH NATIONAL MAP ACCURACY STANDARDS
FOR SALE BY U. S. GEOLOGICAL SURVEY, DENVER, COLORADO 80225, OR RESTON, VIRGINIA 22092
A FOLDER DESCRIBING TOPOGRAPHIC MAPS AND SYMBOLS IS AVAILABLE ON REQUEST



HOT SPRINGS, S. DAK.
N4322.5-W10322.5/7.5

1950
PHOTOREVISED 1979
AMS 5370 IV NW-SERIES V873

Revisions shown in purple and woodland compiled from aerial photographs taken 1976 and other source data
This information not field checked. Map edited 1979
Purple tint indicates extension of urban areas



There may be private inholdings within the boundaries of the National or State reservations shown on this map