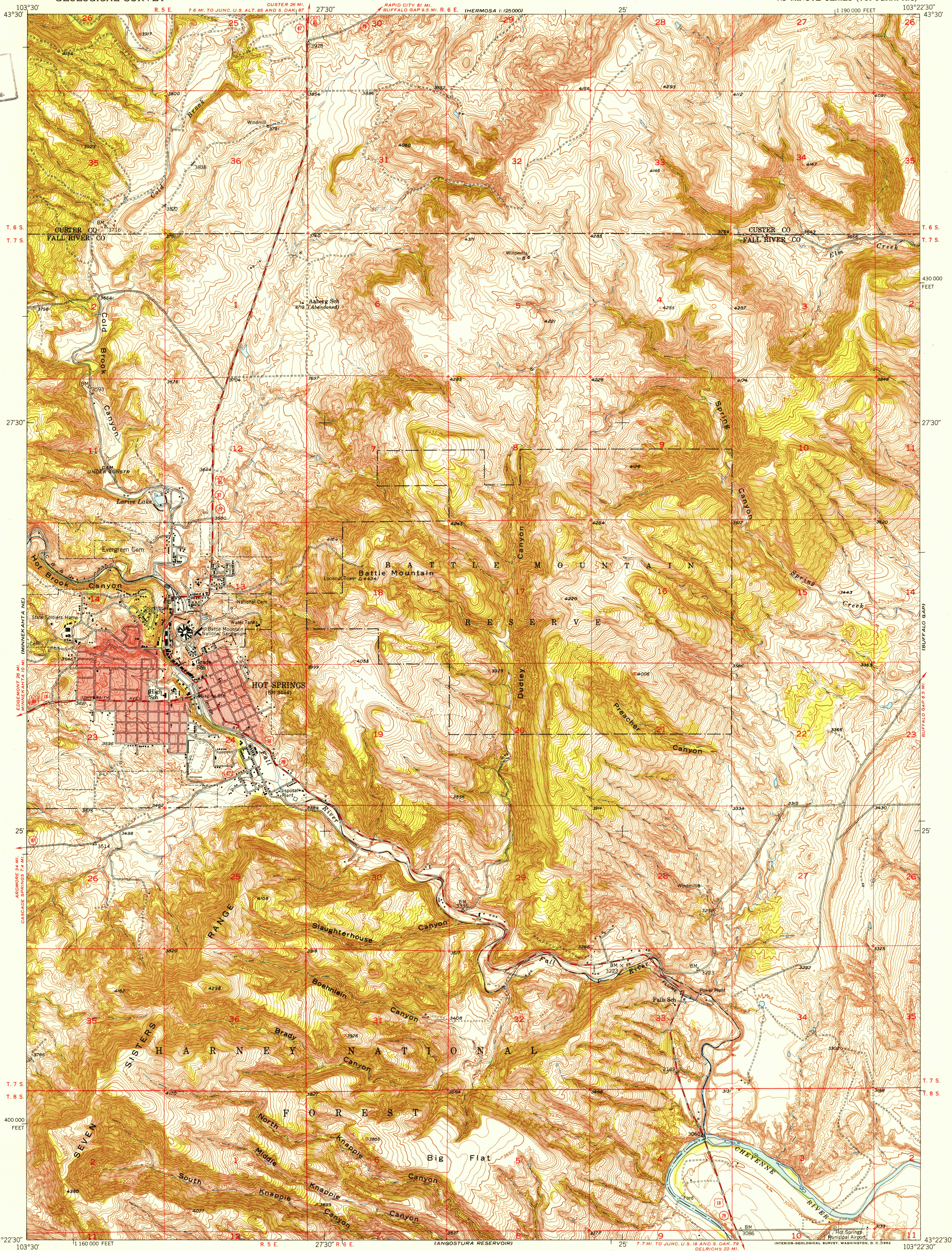
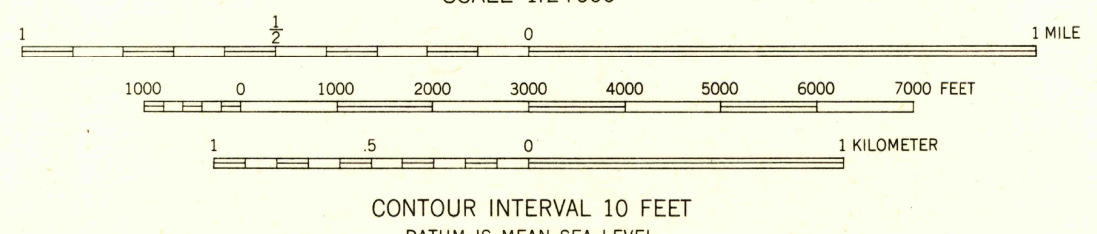
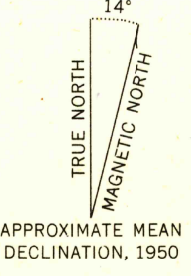


U.S.G.S.
FILE COPY
Inspection and Editing



Mapped, edited, and published by the Geological Survey as part of the Department of the Interior program for the development of the Missouri River Basin. Control by USGS and US&CGS. Topography from aerial photographs by multiplex methods. Aerial photographs taken 1948. Field check 1950. Polyconic projection. 1927 North American datum. 10,000-foot grid based on South Dakota coordinate system, south zone. Red tint indicates areas in which only landmark buildings are shown.



USGS
HISTORICAL FILE
TOPOGRAPHIC DIVISION

ROAD CLASSIFICATION

Heavy-duty	4 LANE 16 LANE	Light-duty
Medium-duty	4 LANE 16 LANE	Unimproved dirt

U.S. Route (circle with number)
State Route (circle with number)

U.S.G.S.
FILE COPY
Inspection and Editing

HOT SPRINGS, S. DAK.
N4322.5-W10322.5/7.5
1950