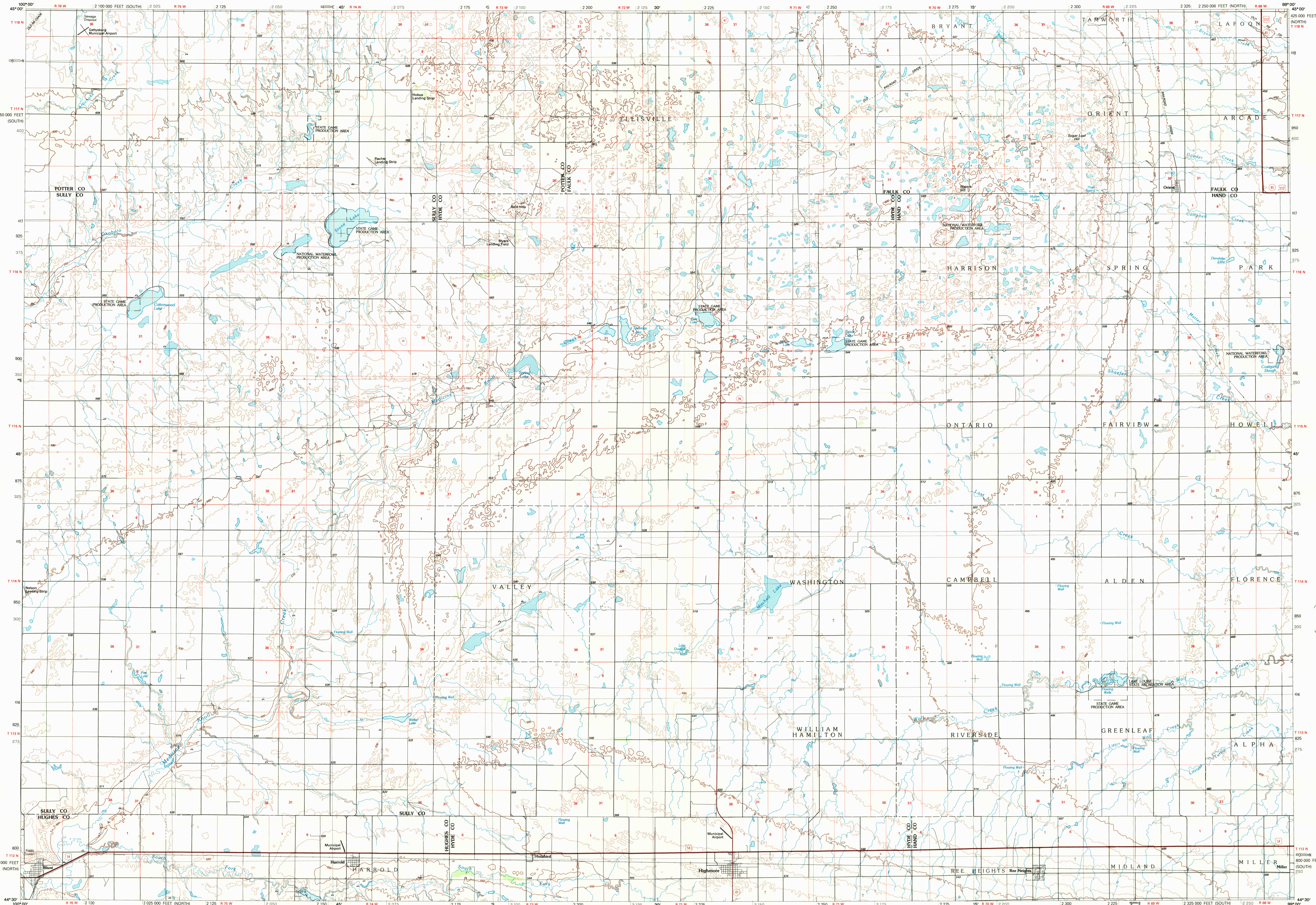


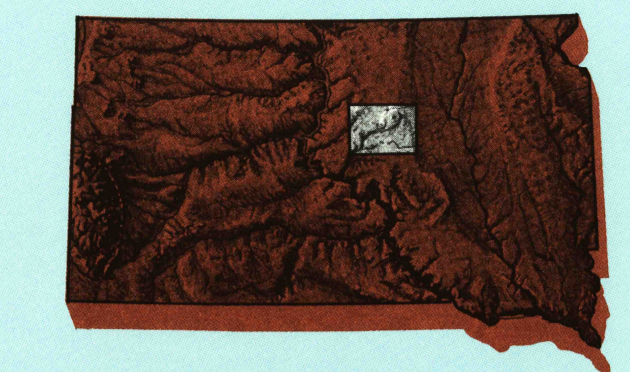
HIGHMORE, SOUTH DAKOTA

30 X 60 MINUTE SERIES (TOPOGRAPHIC)



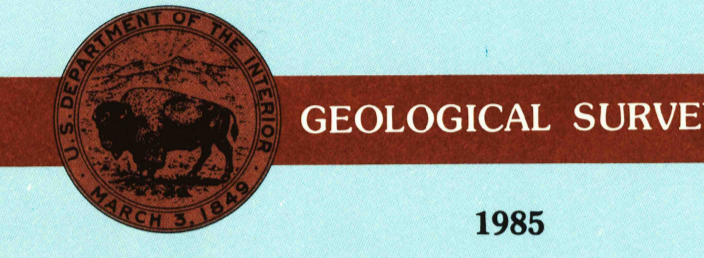
Highmore SOUTH DAKOTA

1:100 000-scale metric topographic map



30 X 60 MINUTE QUADRANGLE SHOWING

- Contours and elevations in meters
- Highways, roads and other manmade structures
- Water features
- Woodland areas
- Geographic names



Produced by the United States Geological Survey
 Compiled from USGS 1:24 000-scale topographic maps dated 1949-1978. Planimetry revised from aerial photographs taken 1984 and other source data. Revised information not field checked. Map edited 1985.
 Projection and 10 000-meter grid, zone 14, Universal Transverse Mercator
 25 000-foot grid ticks based on South Dakota coordinate system, north and south zones
 1927 North American Datum
 To place on the predicted North American Datum 1983, move the projection lines 6 meters north and 33 meters east.
 There may be private inholdings within the boundaries of the National or State reservations shown on this map.

CONTOUR INTERVAL 10 METERS
 NATIONAL GEODETIC VERTICAL DATUM OF 1929
 ELEVATIONS SHOWN TO THE NEAREST METER

THIS MAP COMPLES WITH NATIONAL MAP ACCURACY STANDARDS

CONVERSION TABLE		DECLINATION DIAGRAM		ADJOINING MAPS	
Meters	Feet	Diagram		1	2
1	3.2808			4	3
2	6.5617			5	5
3	9.8425			6	7
4	13.1234			7	8
5	16.4042			8	
6	19.6850				
7	22.9659				
8	26.2467				
9	29.5276				
10	32.8084				

To convert meters to feet multiply by 3.2808
 To convert feet to meters multiply by 0.3048

UTM grid convergency (GN) and 1985 magnetic declination (MD) at center of map
 Diagram is approximate

1 La Plant
 2 Gettysburg
 3 Aberdeen
 4 Onida
 5 Redfield
 6 Pierre
 7 Big Bend Dam
 8 Huron

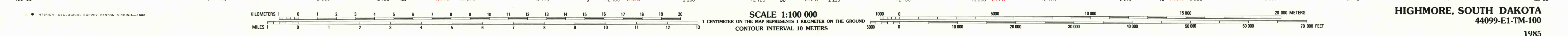
FOR SALE BY U.S. GEOLOGICAL SURVEY
 DENVER, COLORADO 80225, OR RESTON, VIRGINIA 22092
 USGS NMHD HISTORICAL MAP

JAN 0 1 1989
 REC'D FILE COPY

Topographic Map Symbols

- Primary highway, hard surface
- Secondary highway, hard surface
- Light duty road, principal street, hard or improved surface
- Other road or street; trail
- Route marker: Interstate, U.S., State
- Railroad: standard gage; narrow gage
- Bridge: overpass; underpass
- Tunnel: road; railroad
- Built up area, locality, elevation
- Airport: landing field; landing strip
- National boundary
- State boundary
- County boundary
- National or State reservation boundary
- Land grant boundary
- U.S. public lands survey: range, township, section
- Range, township, section line, protracted
- Power transmission line; pipeline
- Dam; dam with lock
- Cemetery; building
- Windmill; water well; spring
- Mine shaft; adit; or cave; mine, quarry; gravel pit
- Campground; picnic area; U.S. location monument
- Ruin; cliff dwelling
- Distorted surface: strip mine, lava, sand
- Contours: index, intermediate, supplementary
- Bathymetric contours: index, intermediate
- Stream, lake; perennial; intermittent
- Rapids; large and small; falls; large and small
- Area to be submerged: marsh, swamp
- Land subject to controlled inundation: woodland
- Scrub; mangrove
- Orchard; vineyard

A pamphlet describing topographic maps is available on request



HIGHMORE, SOUTH DAKOTA
 44099-E1-TM-100
 1985