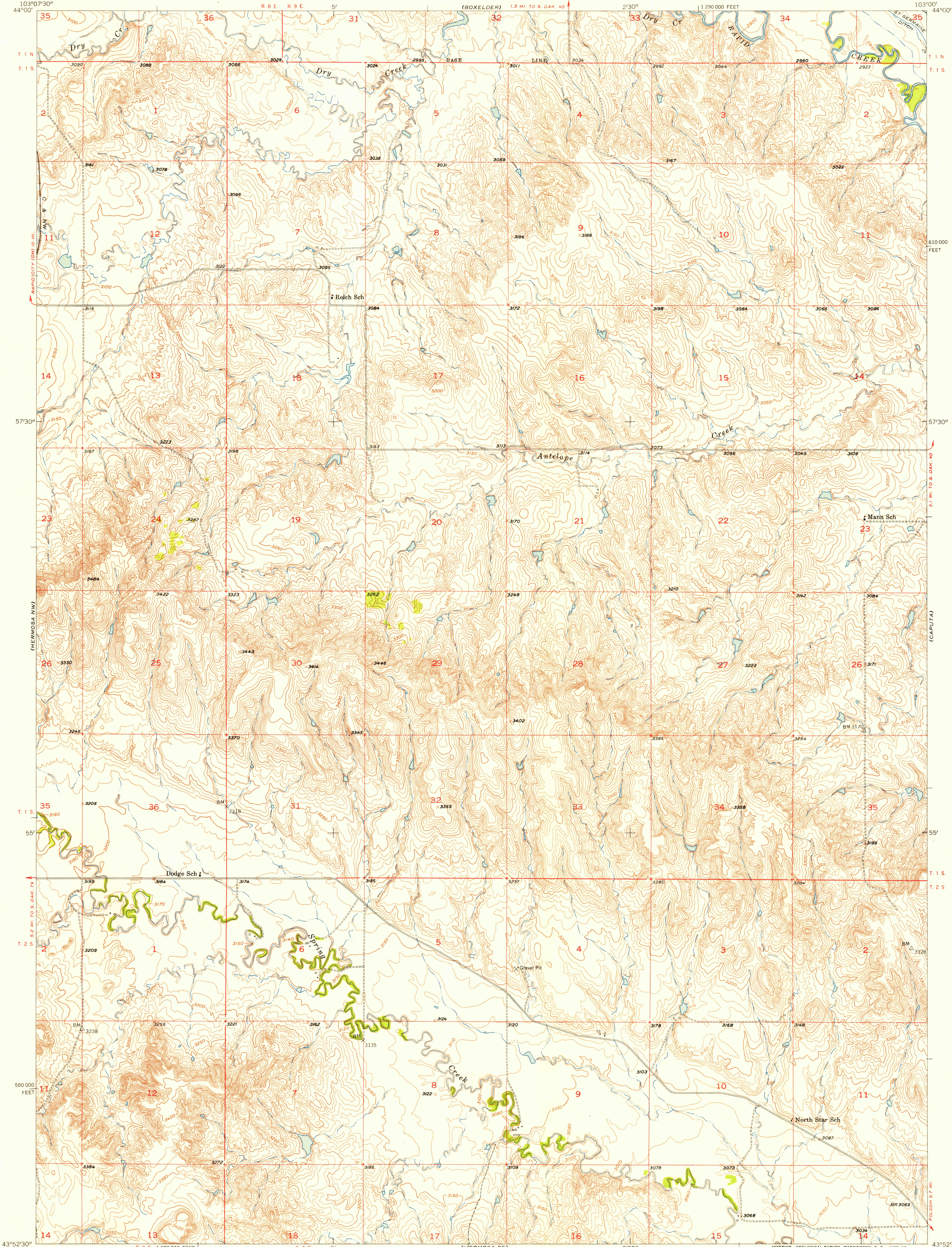
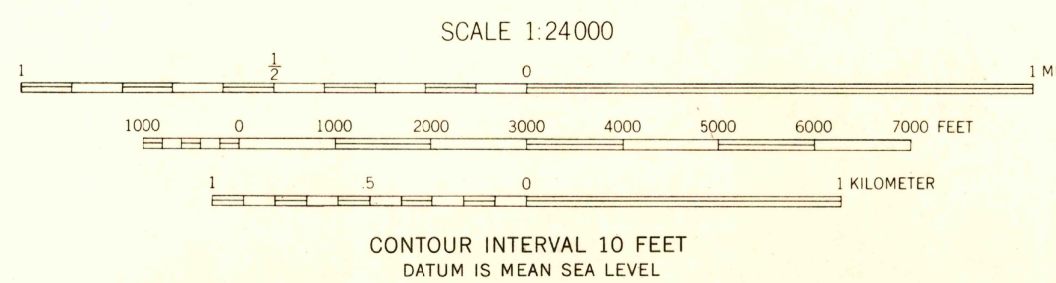


U.S.G.S.
FILE COPY
TOPOGRAPHIC DIVISION



Mapped, edited, and published by the Geological Survey
Control by USGS and USC&GS
Topography from aerial photographs by multiplex methods
Aerial photographs taken 1952. Field check 1953
Polyconic projection. 1927 North American datum
10,000-foot grid based on South Dakota coordinate system,
south zone



USGS
HISTORICAL FILE
TOPOGRAPHIC DIVISION

ROAD CLASSIFICATION

| | | | |
|-------------|---------------|-----------------|---------------|
| Heavy-duty | 4 LANE 6 LANE | Light-duty | 2 LANE 4 LANE |
| Medium-duty | 4 LANE 6 LANE | Unimproved dirt | ----- |

U. S. Route State Route



HERMOSA NE, S. DAK.
N4352.5—W10300/7.5

1953

U.S.G.S.
FILE COPY
TOPOGRAPHIC DIVISION

APR 16 1955

2/20