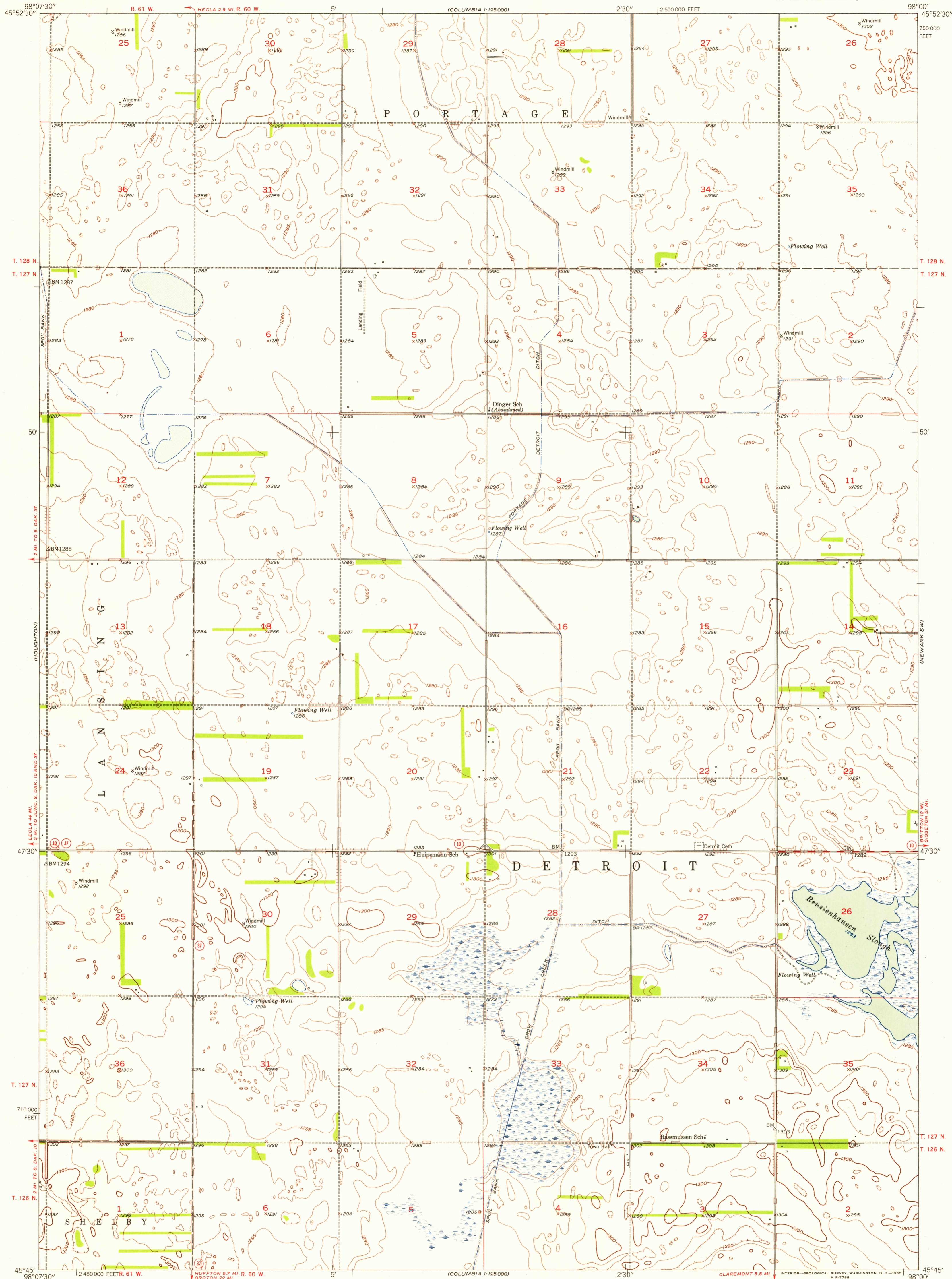
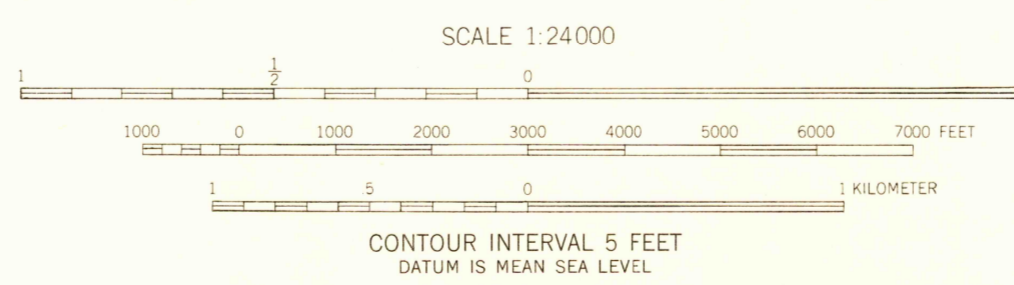


U.S.G.S.
FILE COPY
TOPOGRAPHIC DIVISION



Mapped, edited, and published by the Geological Survey as part of the Department of the Interior program for the development of the Missouri River Basin
Control by USGS and USC&GS
Culture and drainage in part compiled from aerial photographs taken 1951. Topography by plane-table surveys 1953
Polyconic projection. 1927 North American datum
10,000-foot grid based on South Dakota coordinate system, north zone



USGS HISTORICAL FILE TOPOGRAPHIC DIVISION
ROAD CLASSIFICATION
Heavy-duty 4 LANE 6 LANE Light-duty
Medium-duty 4 LANE 6 LANE Unimproved dirt
U.S. Route State Route
SOUTH DAKOTA
QUADRANGLE LOCATION
HECLA SE, S. DAK.
N4545—W9800/7.5

U.S.G.S.
FILE COPY
TOPOGRAPHIC DIVISION