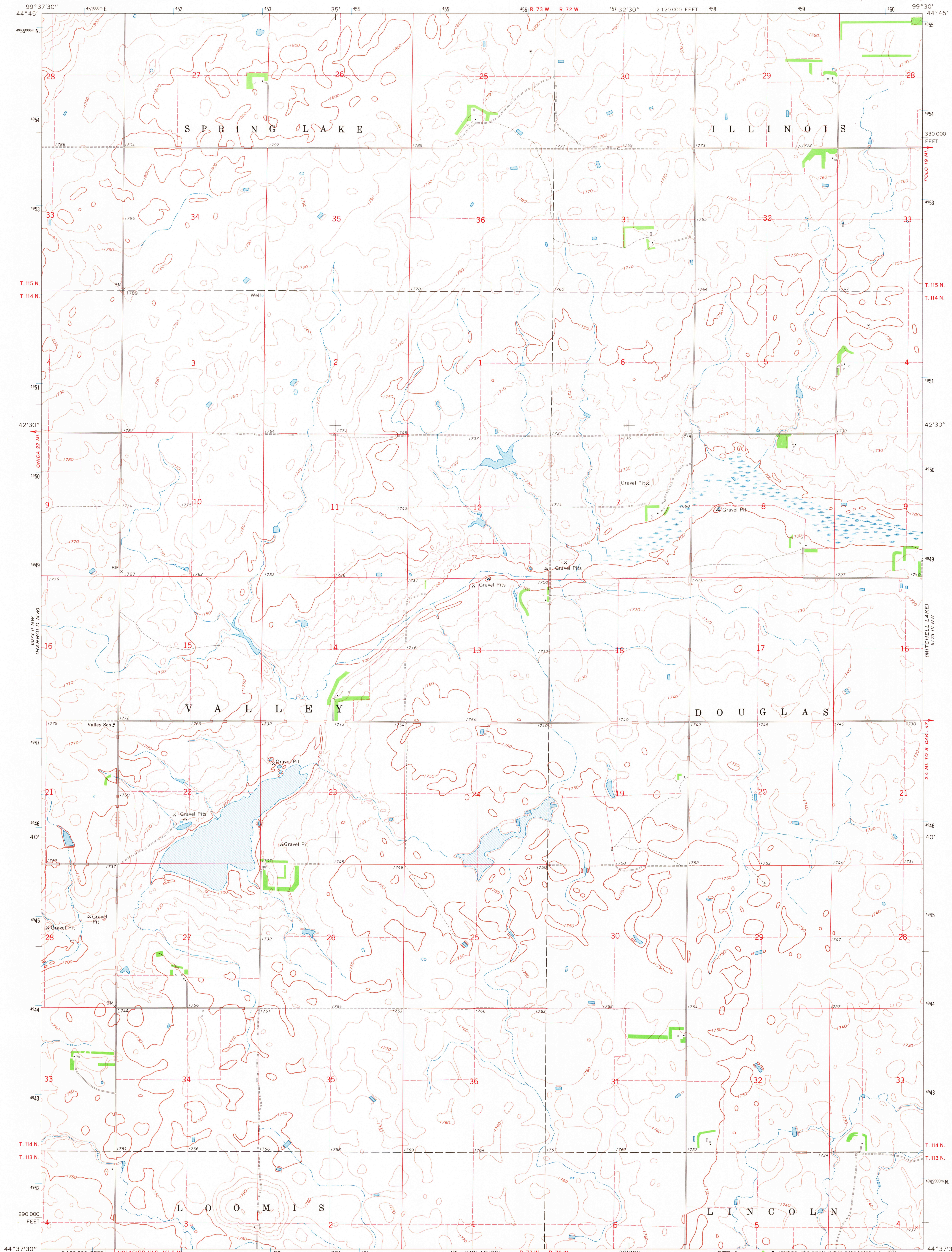


6173 N SW  
(RICE LAKE)



Mapped, edited, and published by the Geological Survey as part of the Department of the Interior program for the development of the Missouri River Basin. Control by USGS and USC&GS. Topography by photogrammetric methods from aerial photographs taken 1967. Field checked 1968. Polyconic projection. 1927 North American datum 10,000-foot grid based on South Dakota coordinate system, north zone 1000-meter Universal Transverse Mercator grid ticks, zone 14, shown in blue. Fine red dashed lines indicate selected fence and field lines where generally visible on aerial photographs. This information is unchecked.

SCALE 1:24,000  
CONTOUR INTERVAL 10 FEET  
DATUM IS MEAN SEA LEVEL  
FOR SALE BY U.S. GEOLOGICAL SURVEY, DENVER, COLORADO 80225, OR WASHINGTON, D. C. 20542  
A FOLDER DESCRIBING TOPOGRAPHIC MAPS AND SYMBOLS IS AVAILABLE ON REQUEST

ROAD CLASSIFICATION  
Light-duty road, all weather, Unimproved road, fair or dry improved surface, weather  
USGS HISTORICAL FILE TOPOGRAPHIC DIVISION  
SOUTH DAKOTA  
QUADRANGLE LOCATION  
HARROLD NE, S. DAK.  
N4437.5—W9930/7.5  
1968  
AMS 6073 II NE—SERIES V873

U.S.G.S.  
FILE COPY  
TOPOGRAPHIC DIVISION

2065  
MAY 10 1971