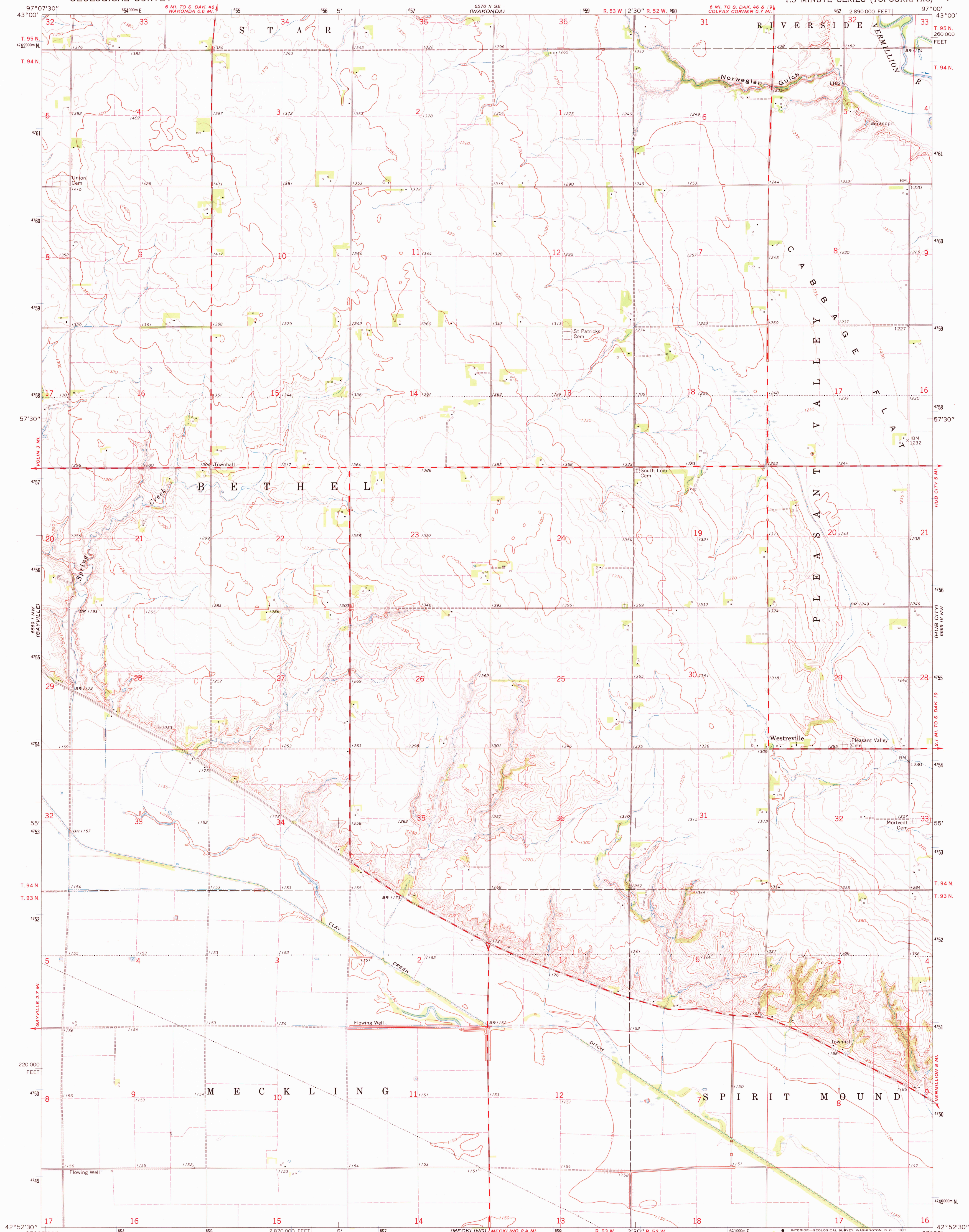
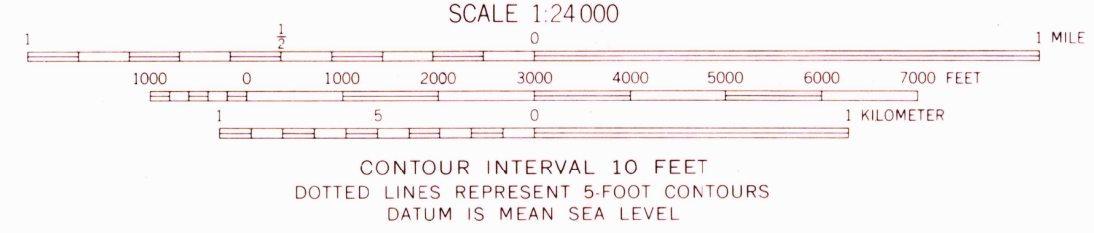
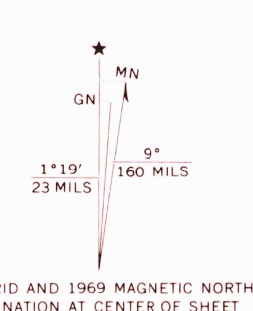


6970 11 SW
(CENTERVILLE)



Mapped, edited, and published by the Geological Survey as part of the Department of the Interior program for the development of the Missouri River Basin. Control by USGS and USC&GS. Topography by photogrammetric methods from aerial photographs taken 1967. Field checked 1969. Polycyclic projection. 1927 North American datum. 10,000-foot grid based on South Dakota coordinate system, south zone 1000-meter Universal Transverse Mercator grid ticks, zone 14, shown in blue. Fine red dashed lines indicate selected fence and field lines where generally visible on aerial photographs. This information is unchecked.



USGS
HISTORICAL FILE
TOPOGRAPHIC DIVISION

ROAD CLASSIFICATION
Secondary highway, all weather, Light-duty road, all weather, hard surface
Unimproved road, fair or dry weather



THIS MAP COMPLIES WITH NATIONAL MAP ACCURACY STANDARDS
FOR SALE BY U.S. GEOLOGICAL SURVEY, DENVER, COLORADO 80225, OR WASHINGTON, D. C. 20242
A FOLDER DESCRIBING TOPOGRAPHIC MAPS AND SYMBOLS IS AVAILABLE ON REQUEST

GAYVILLE NE, S. DAK.
N4252.5—W9700/7.5

1969
AMS 6569 I NE—SERIES V873

2170
HISTORICAL
AUG 3 1971
U.S.G.S.
FILE COPY
TOPOGRAPHIC DIVISION