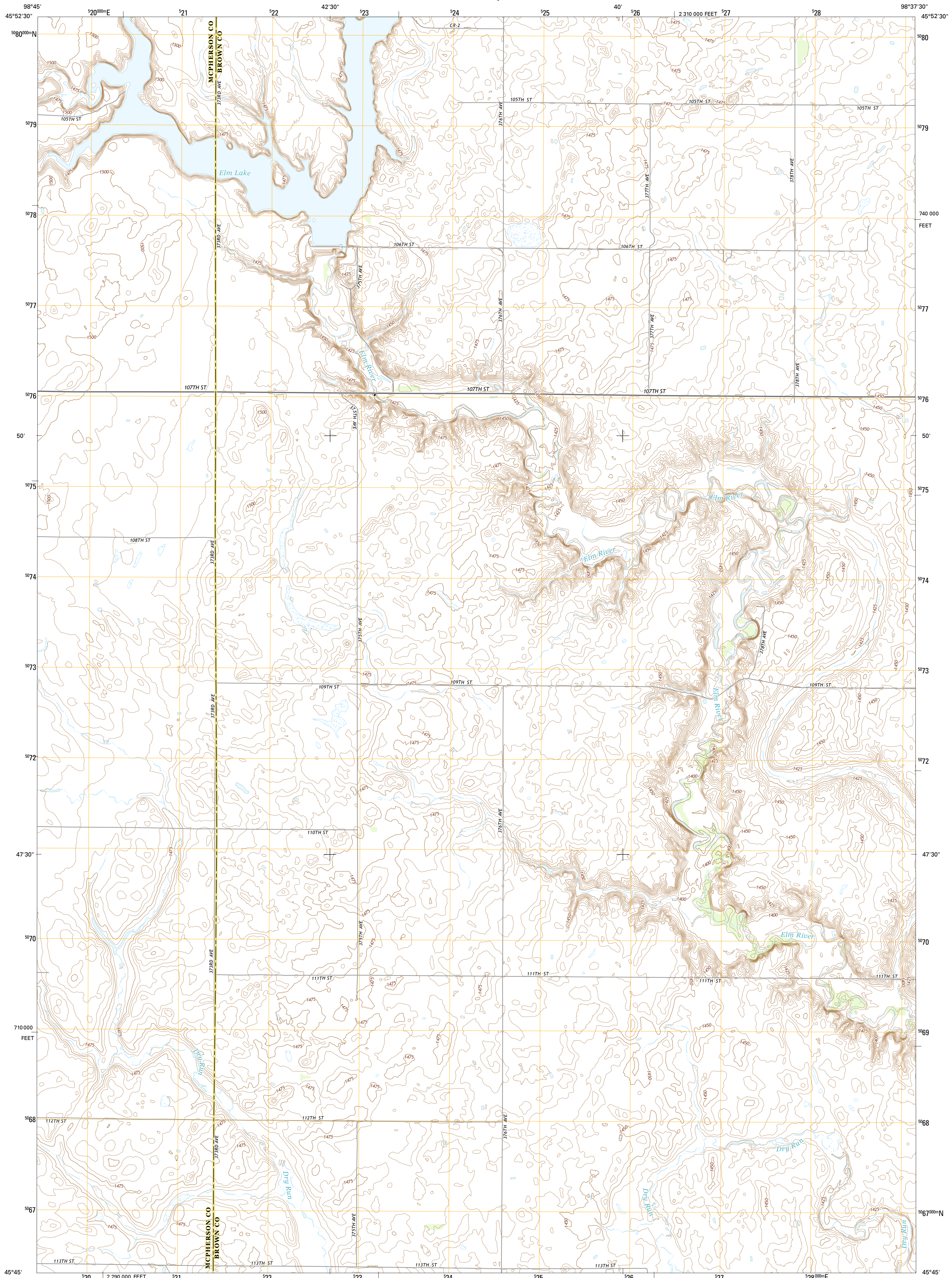




U.S. DEPARTMENT OF THE INTERIOR
U.S. GEOLOGICAL SURVEY



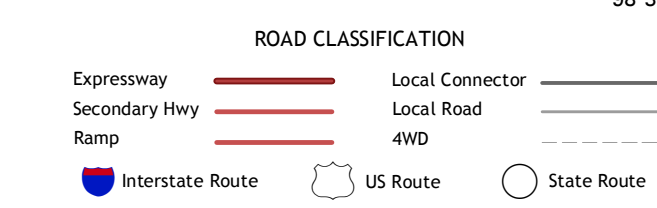
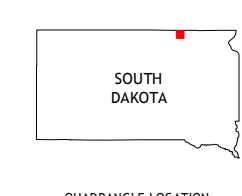
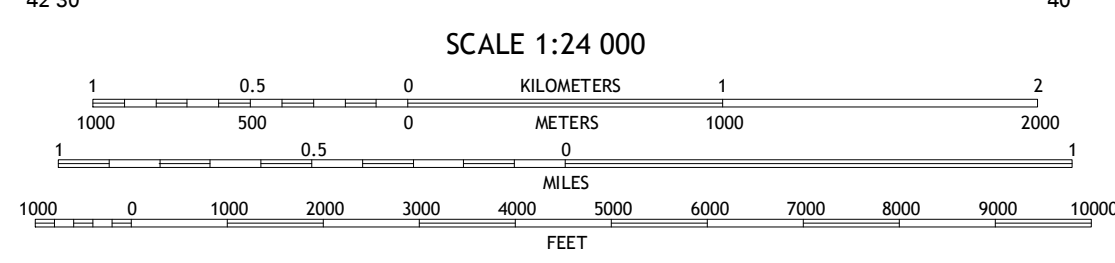
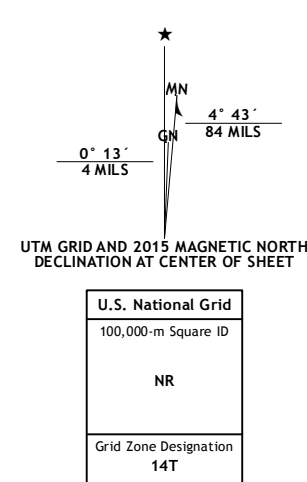
FREDERICK SW QUADRANGLE
SOUTH DAKOTA
7.5-MINUTE SERIES



Produced by the United States Geological Survey
North American Datum of 1983 (NAD83)
World Geodetic System of 1984 (WGS84). Projection and
1 000-meter grid: Universal Transverse Mercator, Zone 14T
10 000-foot ticks: South Dakota Coordinate System of 1983
(north zone)

This map is not a legal document. Boundaries may be
generalized for this map scale. Private lands within government
reservations may not be shown. Obtain permission before
entering private lands.

Imagery.....NAIP, August 2014
Roads.....HERE, 6/2013 2014
Names.....GNIS, 2015
Hydrography.....National Hydrography Dataset, 2014
Contours.....National Elevation Dataset, 2014
Boundaries.....Multiple sources; see metadata file 1972 - 2015
Public Land Survey System.....BLM, 2015



1	2	3	1 Forbes
2	3	4	2 Frederick NW
3	4	5	3 Ellendale South
4	5	6	4 Forbes SE
5	6	7	5 Frederick
6	7	8	6 Wetonka North
7	8		7 Richmond NW
8			8 Richmond NE

ADJOINING QUADRANGLES

FREDERICK SW, SD
2015

