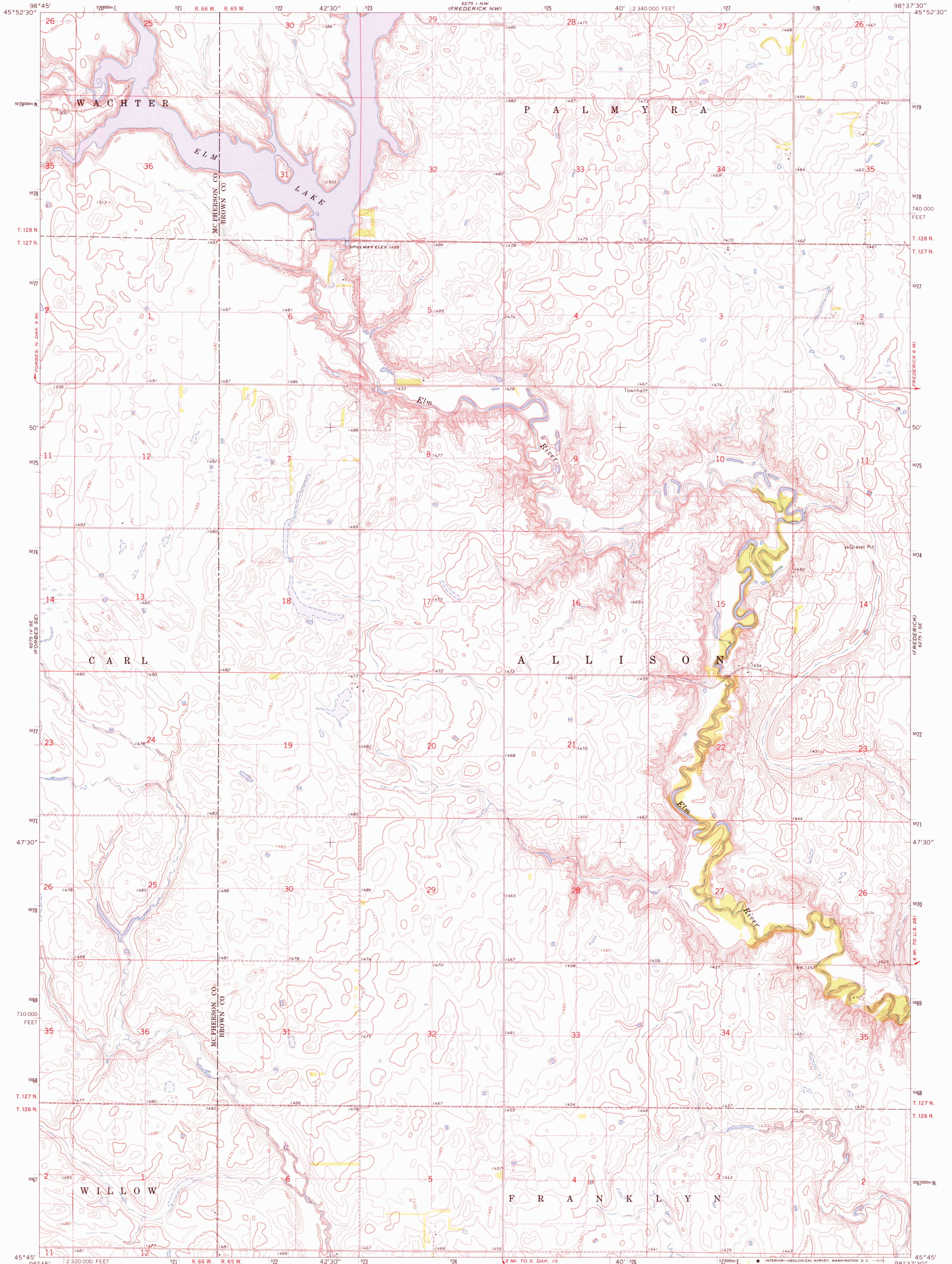


6275 I NE
(FORBES)

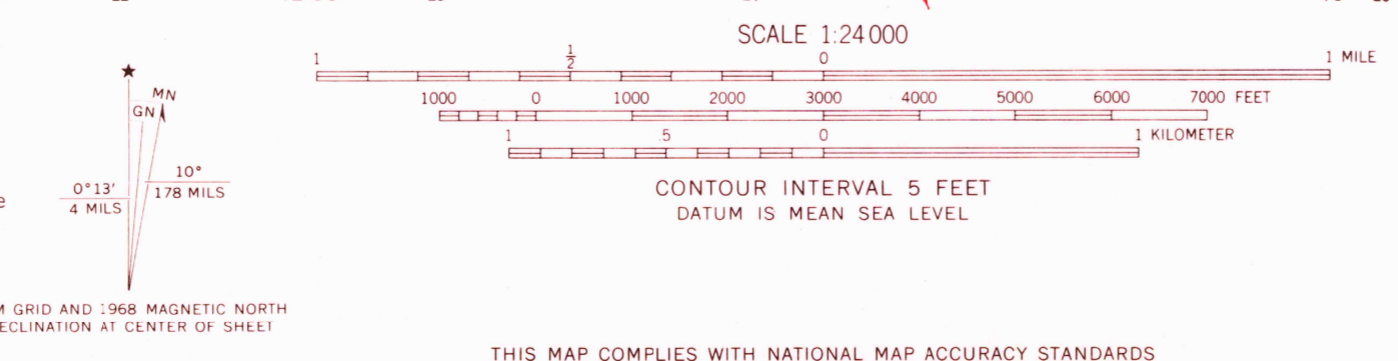
UNITED STATES
DEPARTMENT OF THE INTERIOR
GEOLOGICAL SURVEY

FREDERICK SW QUADRANGLE
SOUTH DAKOTA
7.5 MINUTE SERIES (TOPOGRAPHIC)

6279 I NE
(ELLEDALE SOUTH)



Mapped, edited, and published by the Geological Survey
Control by USGS and USC&GS
Topography by photogrammetric methods from aerial
photographs taken 1965. Field checked 1968
Polyconic projection. 1927 North American datum
10,000-foot grid based on South Dakota coordinate system, north zone
1000-meter Universal Transverse Mercator grid ticks,
zone 14, shown in blue
Fine red dashed lines indicate selected fence and field lines where
generally visible on aerial photographs
This information is unchecked



USGS
HISTORICAL FILE
TOPOGRAPHIC DIVISION
ROAD CLASSIFICATION
Light-duty road, all weather. Unimproved road, fair or dry improved surface weather



U.S.G.S. QUADRANGLE LOCATION
SOUTH DAKOTA
FREDERICK SW, S. DAK.
N4545-W9837.5/7.5
1968
AMS 6275 I SW-SERIES V873

THIS MAP COMPLIES WITH NATIONAL MAP ACCURACY STANDARDS
FOR SALE BY U. S. GEOLOGICAL SURVEY, DENVER, COLORADO 80225, OR WASHINGTON, D. C. 20242
A FOLDER DESCRIBING TOPOGRAPHIC MAPS AND SYMBOLS IS AVAILABLE ON REQUEST

2860
OCT 1 1970