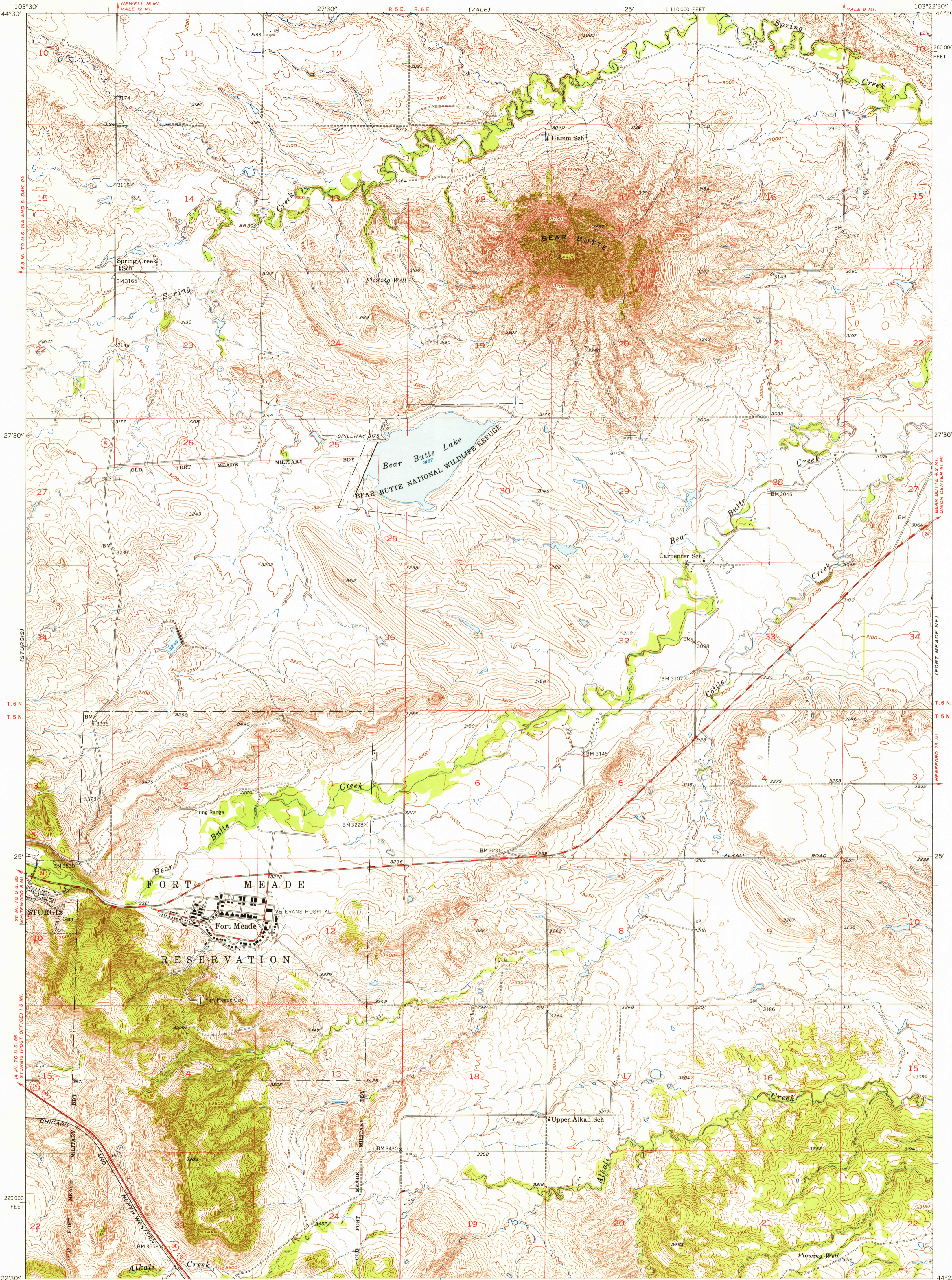
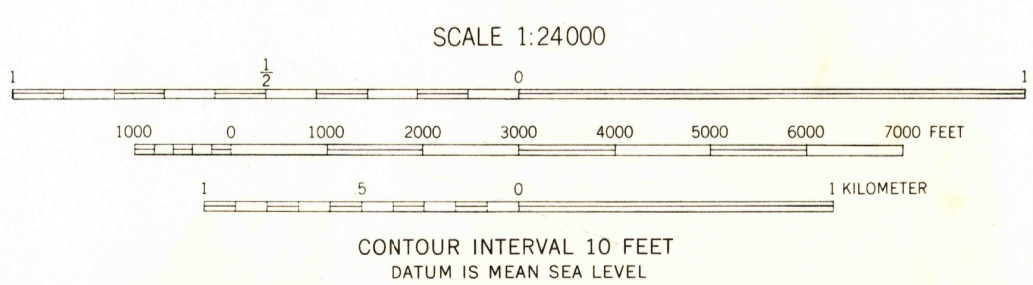
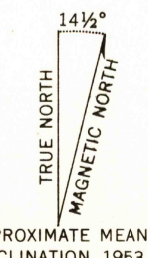


U.S.G.S.  
FILE COPY  
TOPOGRAPHIC DIVISION

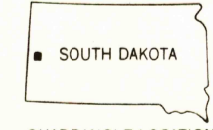
U.S.G.S.  
FILE COPY  
TOPOGRAPHIC DIVISION



Mapped, edited, and published by the Geological Survey  
Control by USGS and USC&GS  
Topography from aerial photographs by multiplex methods  
Aerial photographs taken 1952. Field check 1953  
Polyconic projection. 1927 North American datum  
10,000-foot grid based on South Dakota coordinate system,  
north zone  
Land lines in T. 6 N.—R. 5 E. in Old Fort Meade Military  
Reservation are unsurveyed  
Unchecked elevations are shown in brown



USGS  
HISTORICAL FILE  
TOPOGRAPHIC DIVISION



ROAD CLASSIFICATION

Heavy-duty	4 LANE 16 LANE	Light-duty
Medium-duty	4 LANE 16 LANE	Unimproved dirt
U.S. Route		State Route

FORT MEADE, S. DAK.  
N 4422.5—W 10322.5/7.5