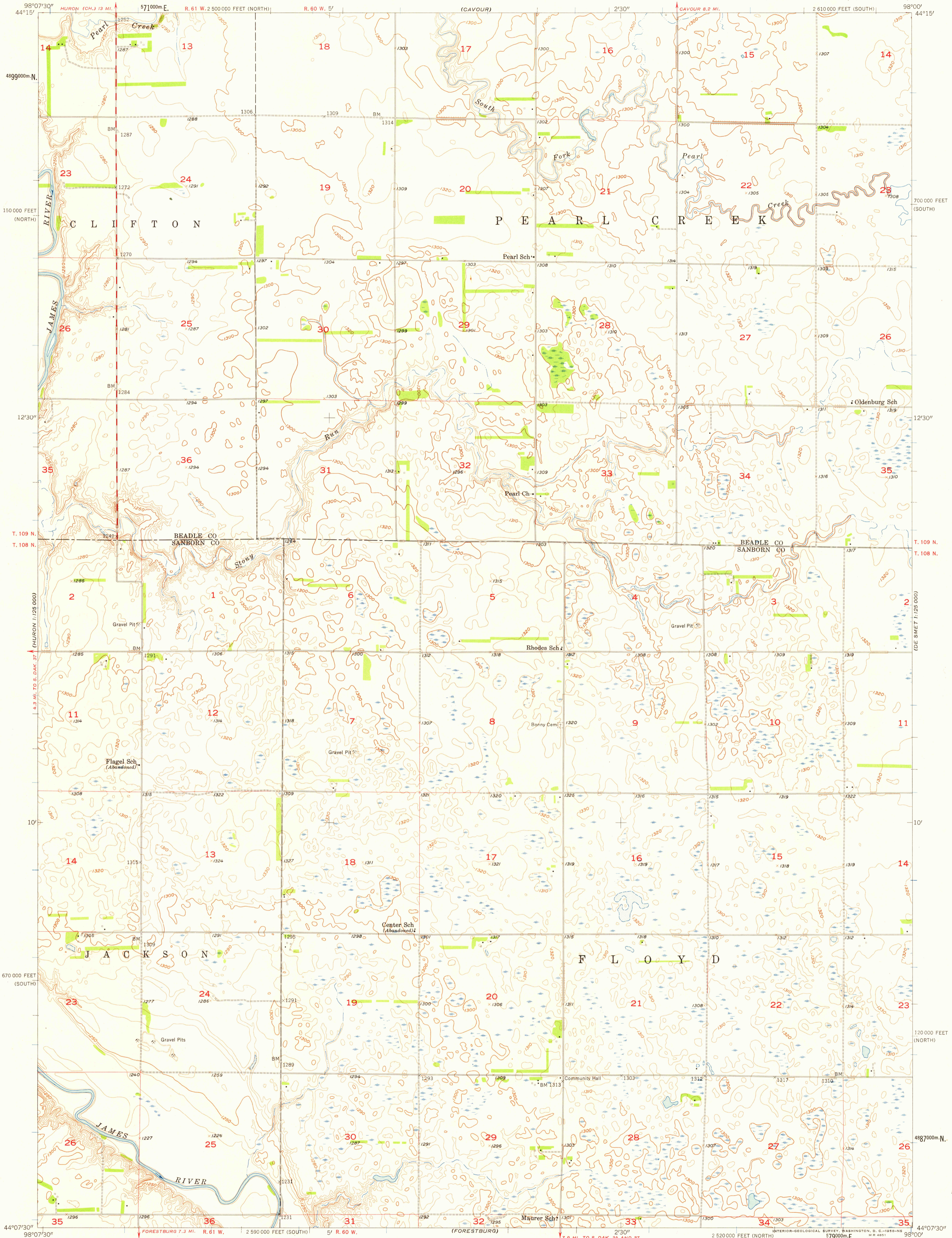


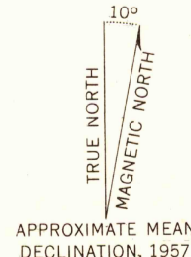
(DE SMET 1:250 000)



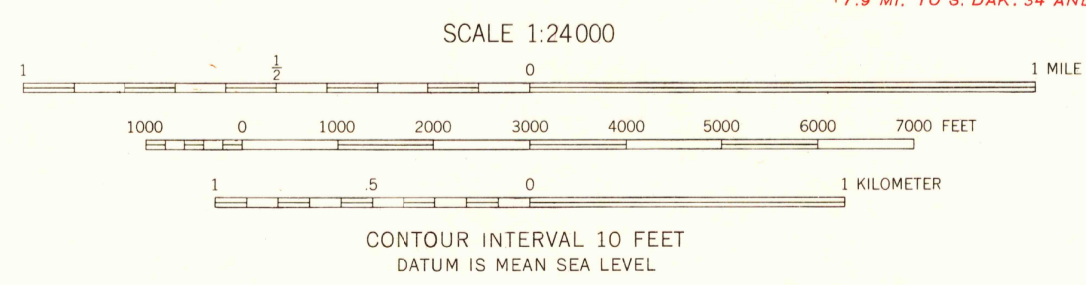
Mapped, edited, and published by the Geological Survey as part of the Department of the Interior program for the development of the Missouri River Basin Control by USGS and USC&GS

Topography from aerial photographs by Kelsh plotter and planimeter surveys 1957. Aerial photographs taken 1954

Polycyclic projection. 1927 North American datum 10,000-foot grids based on South Dakota coordinate system, north and south zones. 1000-meter Universal Transverse Mercator grid ticks, zone 14, shown in blue



APPROXIMATE MEAN DECLINATION, 1957



USGS
HISTORICAL FILE
TOPOGRAPHIC DIVISION

ROAD CLASSIFICATION
Medium-duty
Light-duty
Unimproved dirt



FORESTBURG NE, S. DAK.
N 4407.5—W 9800/7.5

THIS MAP COMPLIES WITH NATIONAL MAP ACCURACY STANDARDS
FOR SALE BY U. S. GEOLOGICAL SURVEY, DENVER 2, COLORADO OR WASHINGTON 25, D. C.
A FOLDER DESCRIBING TOPOGRAPHIC MAPS AND SYMBOLS IS AVAILABLE ON REQUEST

1957

U.S.G.S.
FILE COPY
TOPOGRAPHIC DIVISION

DEC 22 1958

1930