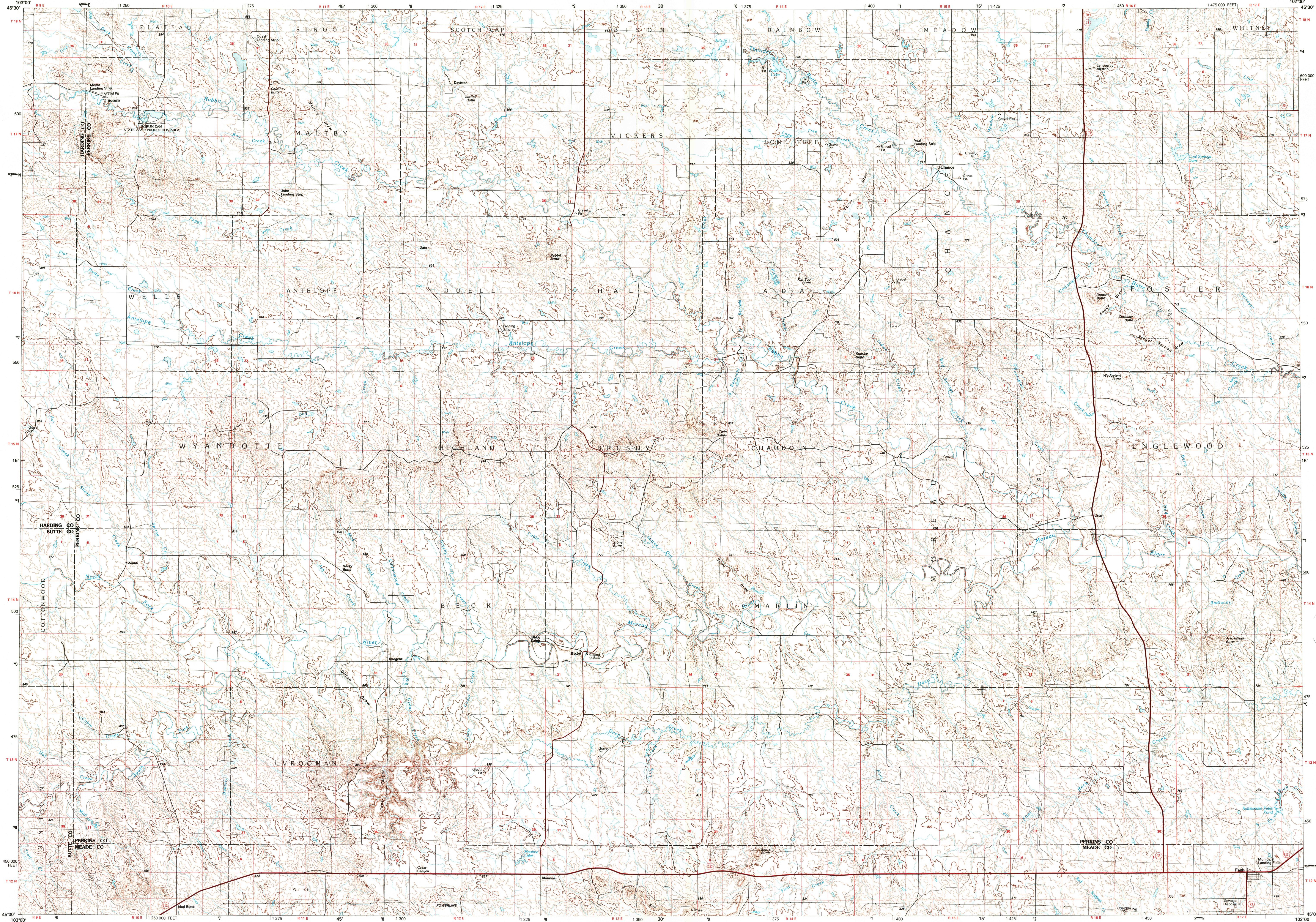


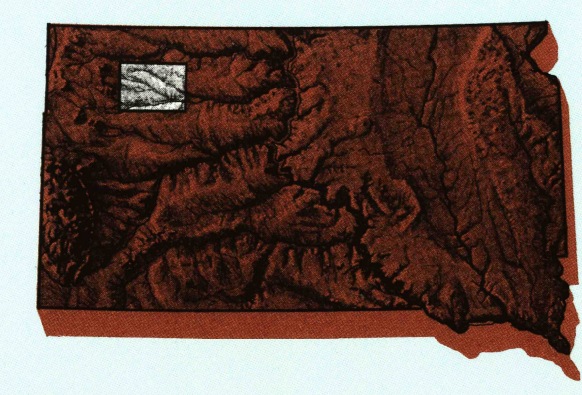
FAITH, SOUTH DAKOTA

30 X 60 MINUTE SERIES (TOPOGRAPHIC)



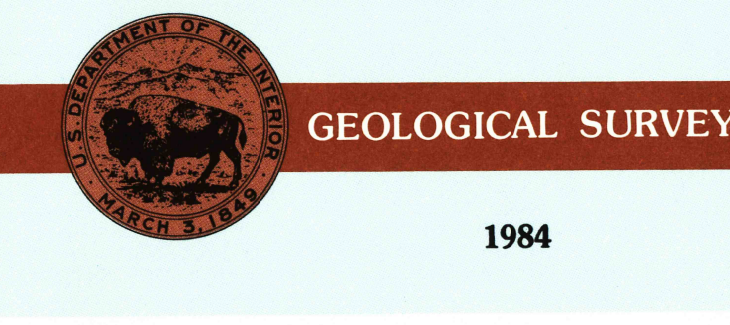
Faith SOUTH DAKOTA

1:100 000-scale metric topographic map



30 X 60 MINUTE QUADRANGLE SHOWING

- Contours and elevations in meters
- Highways, roads and other manmade structures
- Water features
- Woodland areas
- Geographic names



Produced by the United States Geological Survey
 Compiled from USGS 1:24 000-scale topographic maps dated 1953-1983. Planimetry revised from aerial photographs taken 1980 and other source data. Revised information not field checked. Map edited 1984.

Projection and 10 000-meter grid, zone 13, Universal Transverse Mercator
 25 000-foot grid ticks based on South Dakota coordinate system, north zone
 1927 North American Datum
 To place on the predicted North American Datum 1983 move the projection lines 6 meters north and 38 meters east
 There may be private inholdings within the boundaries of the National or State reservations shown on this map

CONTOUR INTERVAL 10 METERS
 NATIONAL GEODETIC VERTICAL DATUM OF 1929
 ELEVATIONS SHOWN TO THE NEAREST METER

THIS MAP COMPLIES WITH NATIONAL MAP ACCURACY STANDARDS

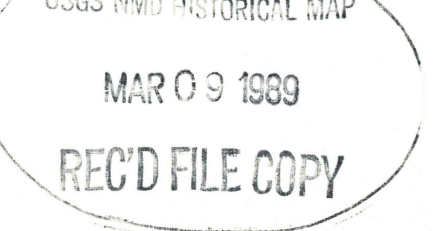
CONVERSION TABLE		DECLINATION DIAGRAM		ADJOINING MAPS		
Meters	Feet	Magnetic Declination		1	2	3
2	6.5617	11° 11' N		4	5	
4	13.1234	11° 11' N		6	7	8
6	19.6851	11° 11' N		1	2	3
8	26.2468	11° 11' N		4	5	6
10	32.8084	11° 11' N		7	8	

To convert meters to feet multiply by 3.2808
 To convert feet to meters multiply by 0.3048

UTM grid convergence (GN and 1984 magnetic declination (MN) at center of map. Diagram is approximate.

1 Camp Crook
 2 Lemmon
 3 McInosh
 4 Reddy
 5 Timber Lake
 6 Belle Fourche
 7 Camp Creek
 8 Cherry Creek

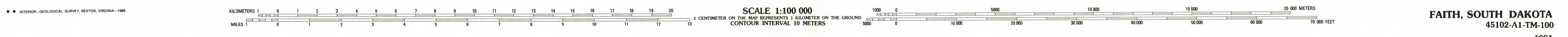
FOR SALE BY U. S. GEOLOGICAL SURVEY, DENVER, COLORADO 80225
 OR RESTON, VIRGINIA 22092



Topographic Map Symbols

Primary highway, hard surface	
Secondary highway, hard surface	
Light duty road, principal street, hard or improved surface	
Other road or street; trail	
Route marker: Interstate; U.S.; State	
Railroad: standard gage; narrow gage	
Bridge: overpass; viaduct	
Tunnel: road; railroad	
Built up area; locality; elevation	
Airport; landing field; landing strip	
National boundary	
State boundary	
County boundary	
National or State reservation boundary	
Land grant boundary	
U.S. public lands survey: range, township; section	
Range, township; section line: protracted	
Power transmission line: pipeline	
Dam; dam with lock	
Cemetery; building	
Windmill; water well; spring	
Mine shaft; adit or cave; mine, quarry; gravel pit	
Campground; picnic area; U.S. location monument	
Ruins; cliff dwelling	
Distorted surface: strip mine, lava, sand	
Contours: index, intermediate, supplementary	
Bathymetric contours; index, intermediate	
Stream, lake: perennial, intermittent	
Rapids, large and small; falls, large and small	
Area to be submerged; marsh, swamp	
Land subject to controlled inundation; woodland	
Scrub; mangrove	
Orchard; vineyard	

A pamphlet describing topographic maps is available on request



FAITH, SOUTH DAKOTA
 45102-A1-TM-100
 1984