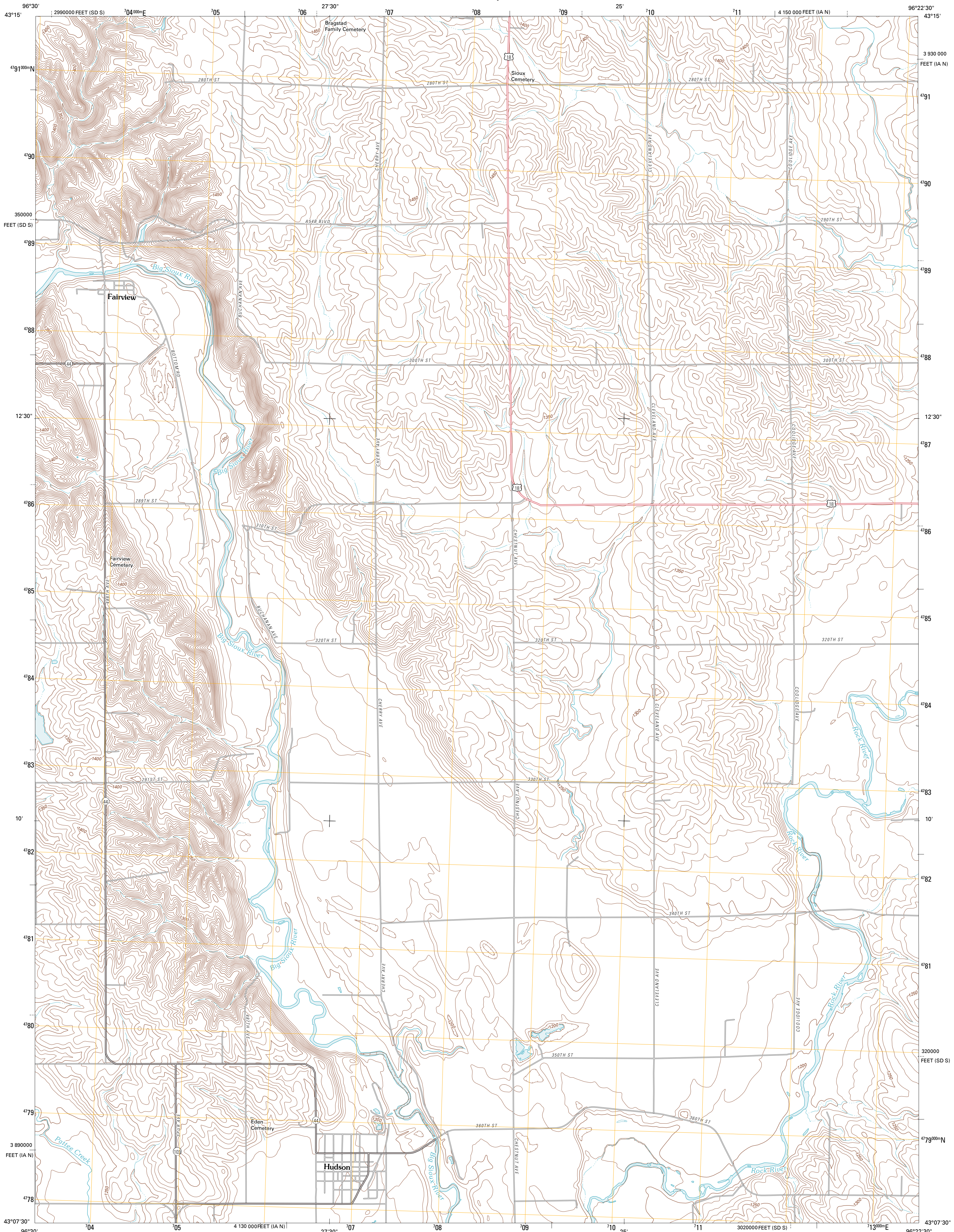




U.S. DEPARTMENT OF THE INTERIOR
U. S. GEOLOGICAL SURVEY

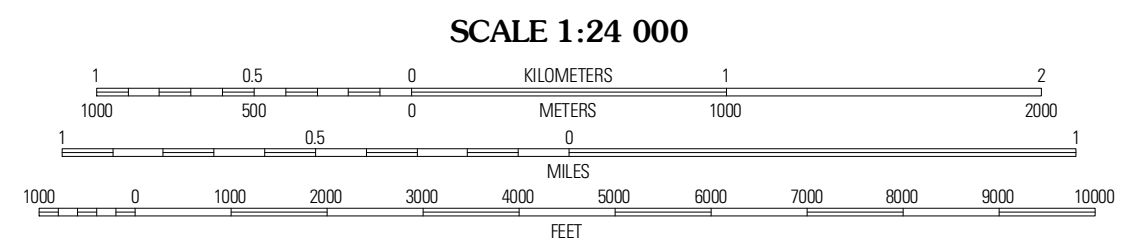
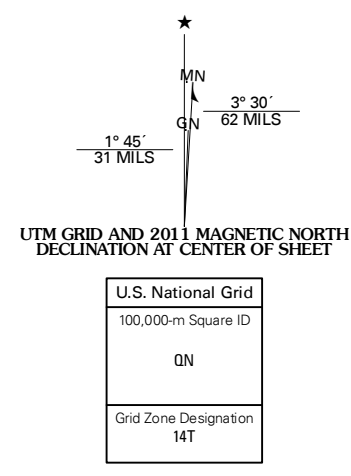


FAIRVIEW QUADRANGLE
SOUTH DAKOTA-IOWA
7.5-MINUTE SERIES



Produced by the United States Geological Survey
North American Datum of 1983 (NAD83)
World Geodetic System of 1984 (WGS84). Projection and
1 000-meter grid: Universal Transverse Mercator, Zone 14T
10 000-foot ticks: Iowa Coordinate System of 1983 (north
zone), South Dakota Coordinate System of 1983 (south zone)

Imagery.....NAIP, July 2009 - August 2009
Roads.....©2006-2010 Tele Atlas
Names.....©2010 GNS, 2010
Hydrography.....National Hydrography Dataset, 2009
Contours.....National Elevation Dataset, 2006



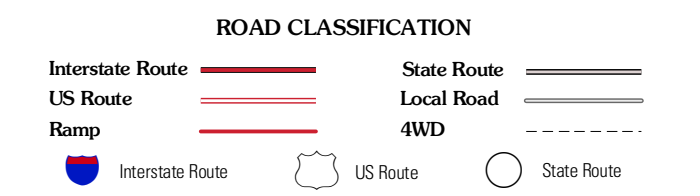
CONTOUR INTERVAL 10 FEET
NORTH AMERICAN VERTICAL DATUM OF 1988
This map was produced to conform with version 0.5.10 of the
draft USGS Standards for 7.5-Minute Quadrangle Maps.
A metadata file associated with this product is draft version 0.5.11



QUADRANGLE LOCATION

Canton	Inwood	Alford
Alcester NE	Fairview	Rock Valley
Alcester SE	Hawarden North	Lohanon

ADJOINING 7.5 QUADRANGLES



FAIRVIEW, SD-IA
2011