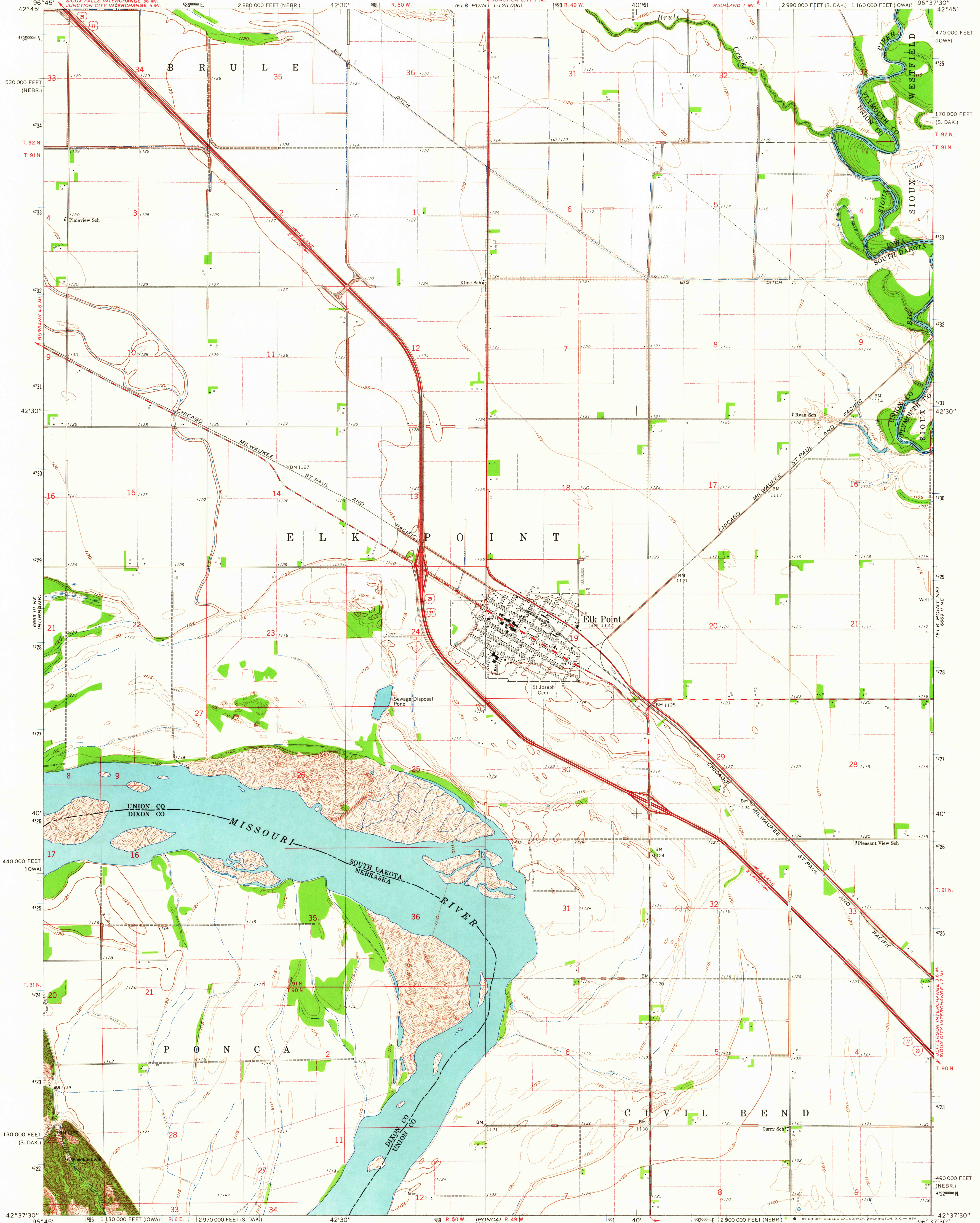
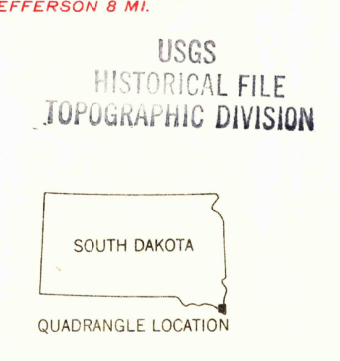
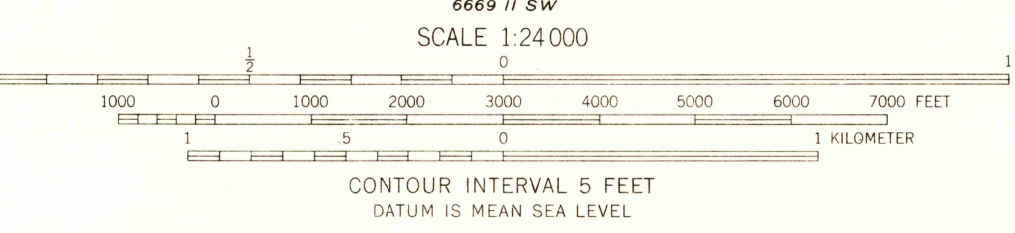
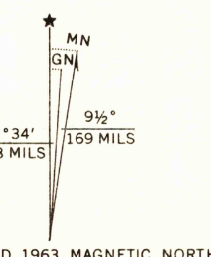


UNITED STATES
DEPARTMENT OF THE INTERIOR
GEOLOGICAL SURVEY

ELK POINT QUADRANGLE
SOUTH DAKOTA-NEBRASKA-IOWA
7.5 MINUTE SERIES (TOPOGRAPHIC)



Mapped, edited, and published by the Geological Survey
Control by USGS and USC&GS
Planimetry by photogrammetric methods from aerial photographs taken 1951. Topography by planetable surveys 1963
Polyconic projection. 1927 North American datum
10,000-foot grids based on South Dakota coordinate system, south zone, Nebraska coordinate system, north zone and Iowa coordinate system, north zone
1000-meter Universal Transverse Mercator grid ticks, zone 14, shown in blue
Fine red dashed lines indicate selected fence and field lines where generally visible on aerial photographs. This information is unchecked



ROAD CLASSIFICATION

Heavy-duty	Light-duty
Medium-duty	Unimproved dirt
Interstate Route	U.S. Route

THIS MAP COMPLIES WITH NATIONAL MAP ACCURACY STANDARDS
FOR SALE BY U.S. GEOLOGICAL SURVEY, DENVER 25, COLORADO OR WASHINGTON 25, D. C.
AND BY THE IOWA GEOLOGICAL SURVEY, IOWA CITY, IOWA
A FOLDER DESCRIBING TOPOGRAPHIC MAPS AND SYMBOLS IS AVAILABLE ON REQUEST

ELK POINT, S. DAK.-NEBR.-IOWA
N4237.5-W9637.5/7.5
1963
AMS 6669 II NW-SERIES V873

U.S.G.S.
FILE COPY
TOPOGRAPHIC DIVISION

SEP 2 1 1964
2995