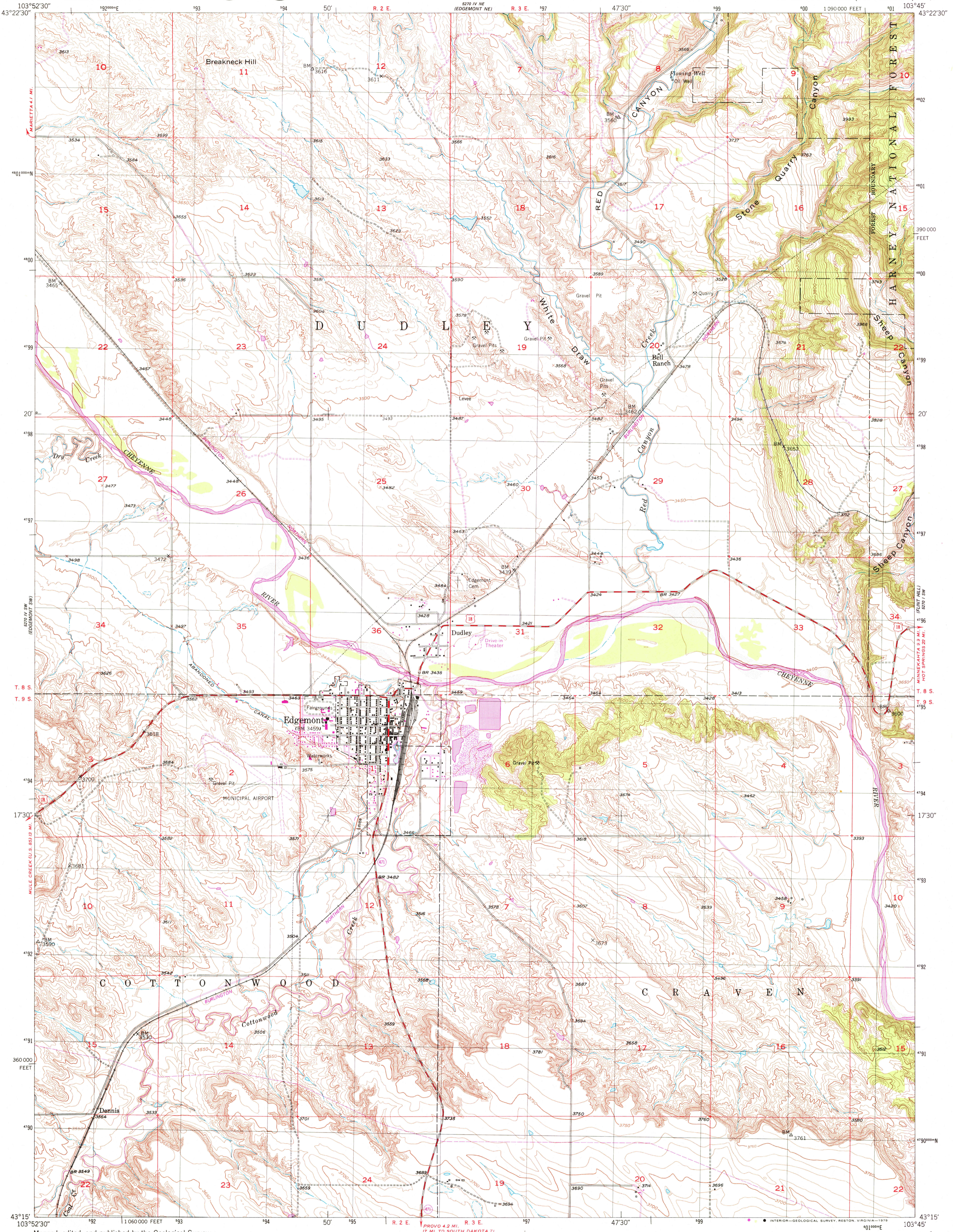
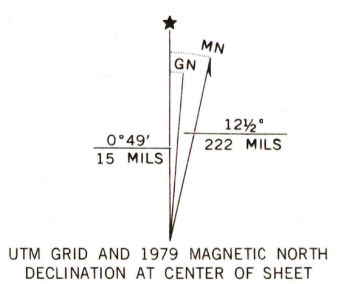


50° 15' N W
(BURLINGHAM)

50° 15' N W
(MINNEAPOLIS)



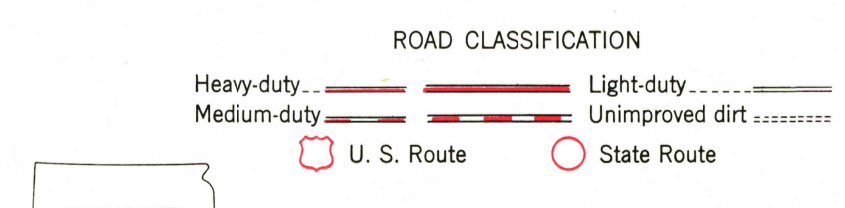
Mapped, edited, and published by the Geological Survey as part of the Department of the Interior program for the development of the Missouri River Basin Control by USGS and USC&GS
Topography from aerial photographs by multiplex methods Aerial photographs taken 1949. Field check 1950
Polyconic projection. 1927 North American datum 10,000-foot grid based on South Dakota coordinate system, south zone
1000-meter Universal Transverse Mercator grid, zone 13
There may be private inholdings within the boundaries of the National or State reservations shown on this map
Revisions shown in purple compiled from aerial photographs taken 1976 and other source data. This information not field checked. Map edited 1979



1 1000 2000 3000 4000 5000 6000 7000 FEET
1 5 10 15 20 KILOMETER

CONTOUR INTERVAL 10 FEET
DOTTED LINES REPRESENT 5-FOOT CONTOURS
NATIONAL GEODETIC VERTICAL DATUM OF 1929

THIS MAP COMPLIES WITH NATIONAL MAP ACCURACY STANDARDS
FOR SALE BY U. S. GEOLOGICAL SURVEY, DENVER, COLORADO 80225, OR RESTON, VIRGINIA 22092
A FOLDER DESCRIBING TOPOGRAPHIC MAPS AND SYMBOLS IS AVAILABLE ON REQUEST



USGS
Historical File
Topographic Division
EDGEMONT, S. DAK.
N4315-W10345/7.5

1950
PHOTOREVISED 1979
AMS 5270 IV SE-SERIES V873

NOV 28 1979
1734