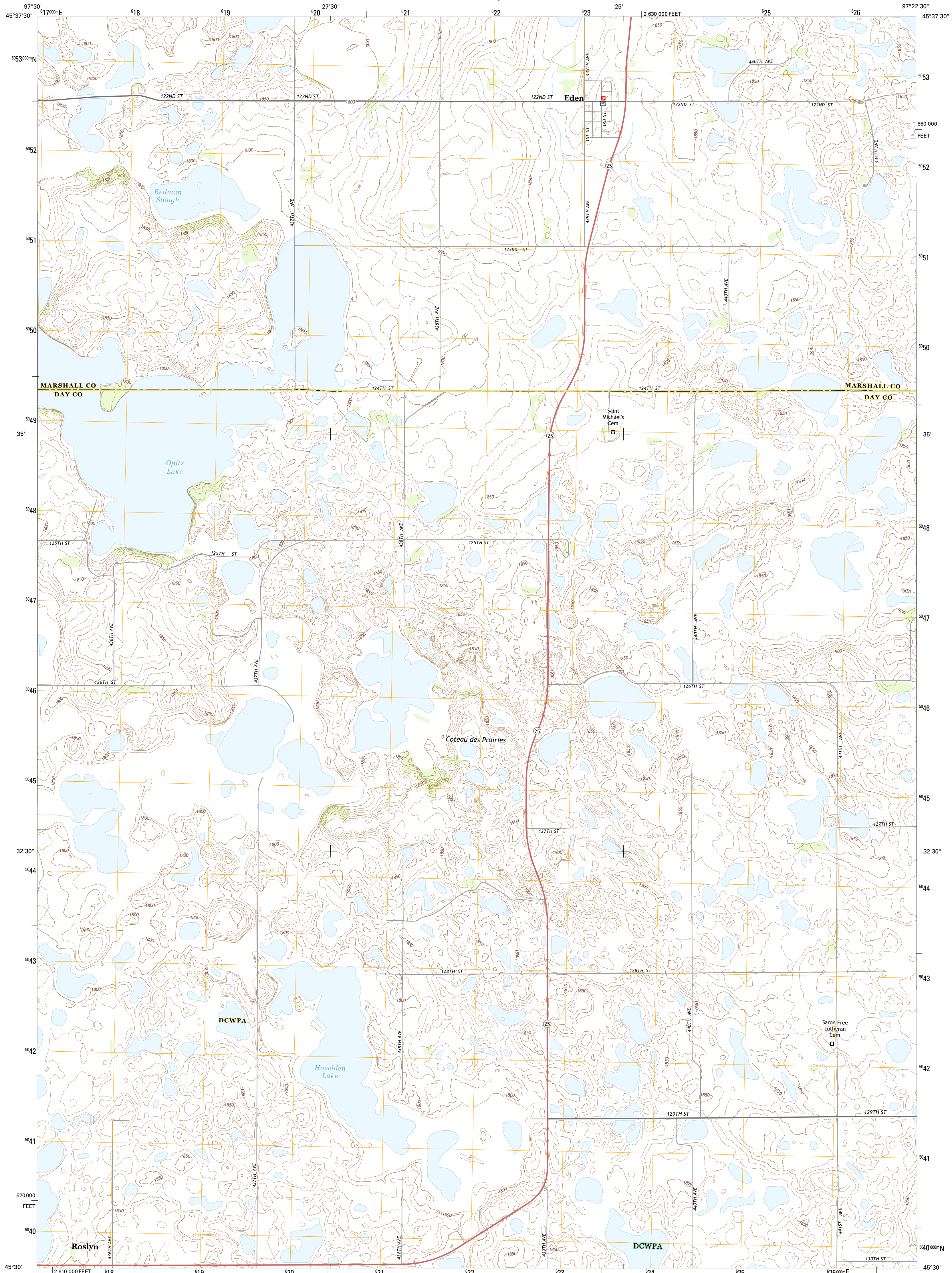




U.S. DEPARTMENT OF THE INTERIOR
U.S. GEOLOGICAL SURVEY



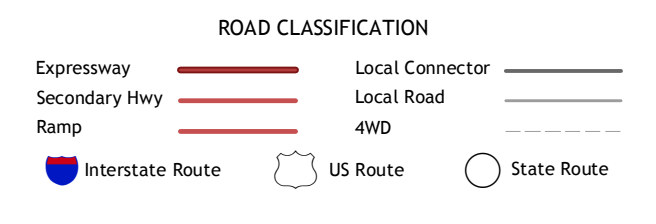
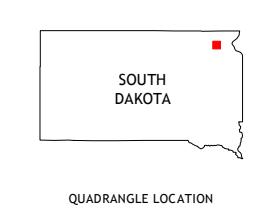
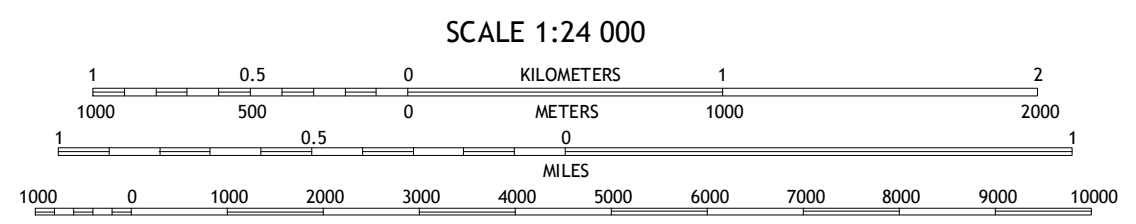
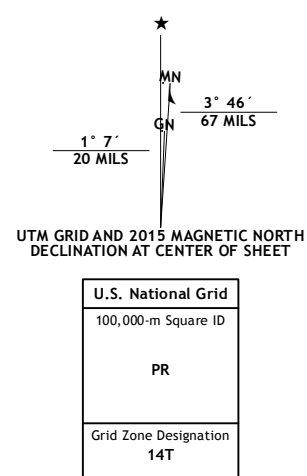
EDEN QUADRANGLE
SOUTH DAKOTA
7.5-MINUTE SERIES



Produced by the United States Geological Survey
North American Datum of 1983 (NAD83)
World Geodetic System of 1984 (WGS84). Projection and
1 000-meter grid: Universal Transverse Mercator, Zone 14T
10 000-foot ticks: South Dakota Coordinate System of 1983
(north zone)

This map is not a legal document. Boundaries may be
generalized for this map scale. Private lands within government
reservations may not be shown. Obtain permission before
entering private lands.

Imagery: N.A.I.P., September 2014
Roads: HERE, ©2013-2014
Names: GNIS, 2015
Hydrography: National Hydrography Dataset, 2014
Contours: National Elevation Dataset, 2014
Boundaries: Multiple sources; see metadata file 1972-2015
Public Land Survey System: BLM, 2015



CONTOUR INTERVAL 10 FEET
NORTH AMERICAN VERTICAL DATUM OF 1988

This map was produced to conform with the
National Geospatial Program US Topo Product Standard, 2011.
A metadata file associated with this product is draft version 0.6.18

1	2	3
4	5	6
7	8	9

ADJOINING QUADRANGLES

- 1 Twomile Lake
- 2 Lake City
- 3 South Red Iron Lake
- 4 Skangland Slough
- 5 Piyas Lake
- 6 Webster NE
- 7 Roslyn
- 8 Enemy Swim Lake West

EDEN, SD
2015

