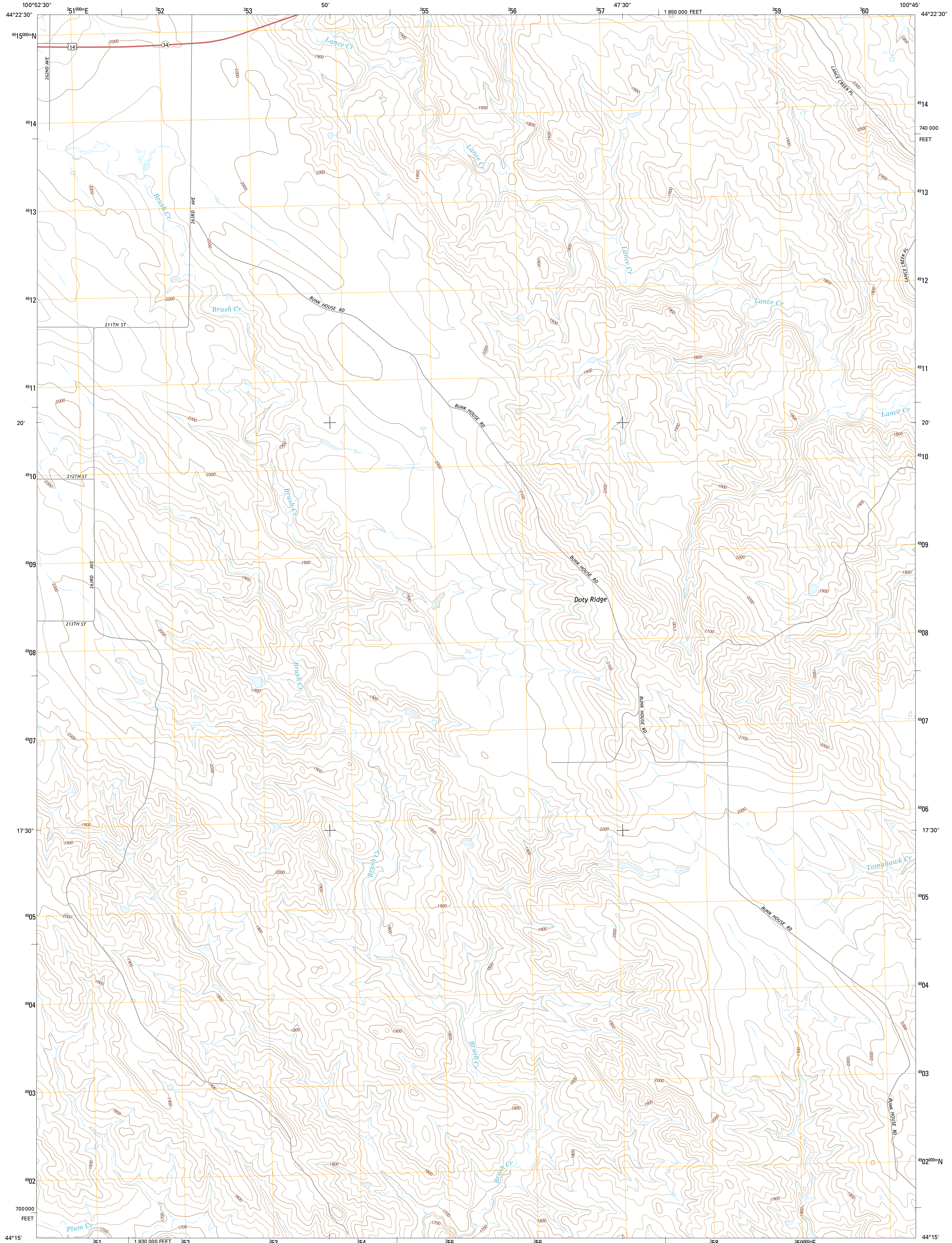




U.S. DEPARTMENT OF THE INTERIOR
U.S. GEOLOGICAL SURVEY



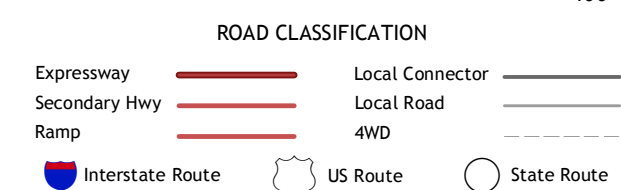
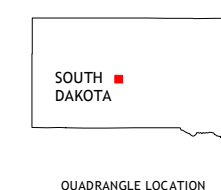
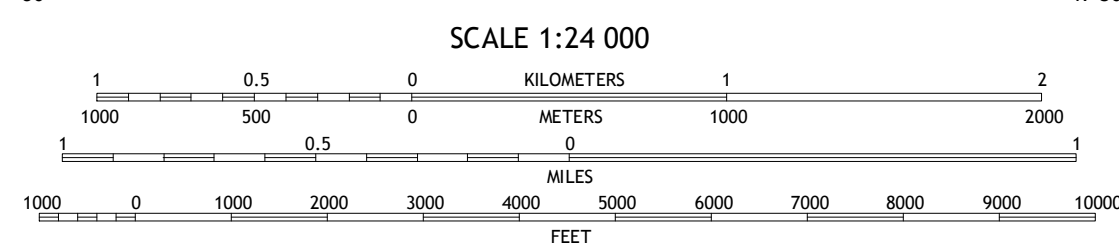
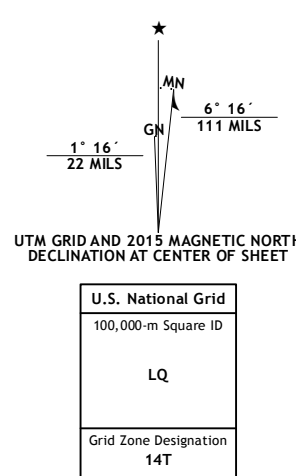
DOTY RIDGE QUADRANGLE
SOUTH DAKOTA-STANLEY CO.
7.5-MINUTE SERIES



Produced by the United States Geological Survey
North American Datum of 1983 (NAD83)
World Geodetic System of 1984 (WGS84), Projection and
1 000-meter grid; Universal Transverse Mercator, Zone 14T
10 000-foot ticks: South Dakota Coordinate System of 1983
(south zone)

This map is not a legal document. Boundaries may be
generalized for this map scale. Private lands within government
reservations may not be shown. Obtain permission before
entering private lands.

Imagery: NADIP, September 2014
Roads: HERE, ©2013 - 2014
Names: GNIS, 2015
Hydrography: National Hydrography Dataset, 2014
Contours: National Elevation Dataset, 2012
Boundaries: Multiple sources; see metadata file 1972 - 2015
Public Land Survey System: BLM, 2015



1	2	3
4	5	6
7	8	

ADJOINING QUADRANGLES

DOTY RIDGE, SD
2015



CONTOUR INTERVAL 20 FEET
NORTH AMERICAN VERTICAL DATUM OF 1988
This map was produced to conform with the
National Geospatial Program US Topo Product Standard, 2011.
A metadata file associated with this product is draft version 0.6.18