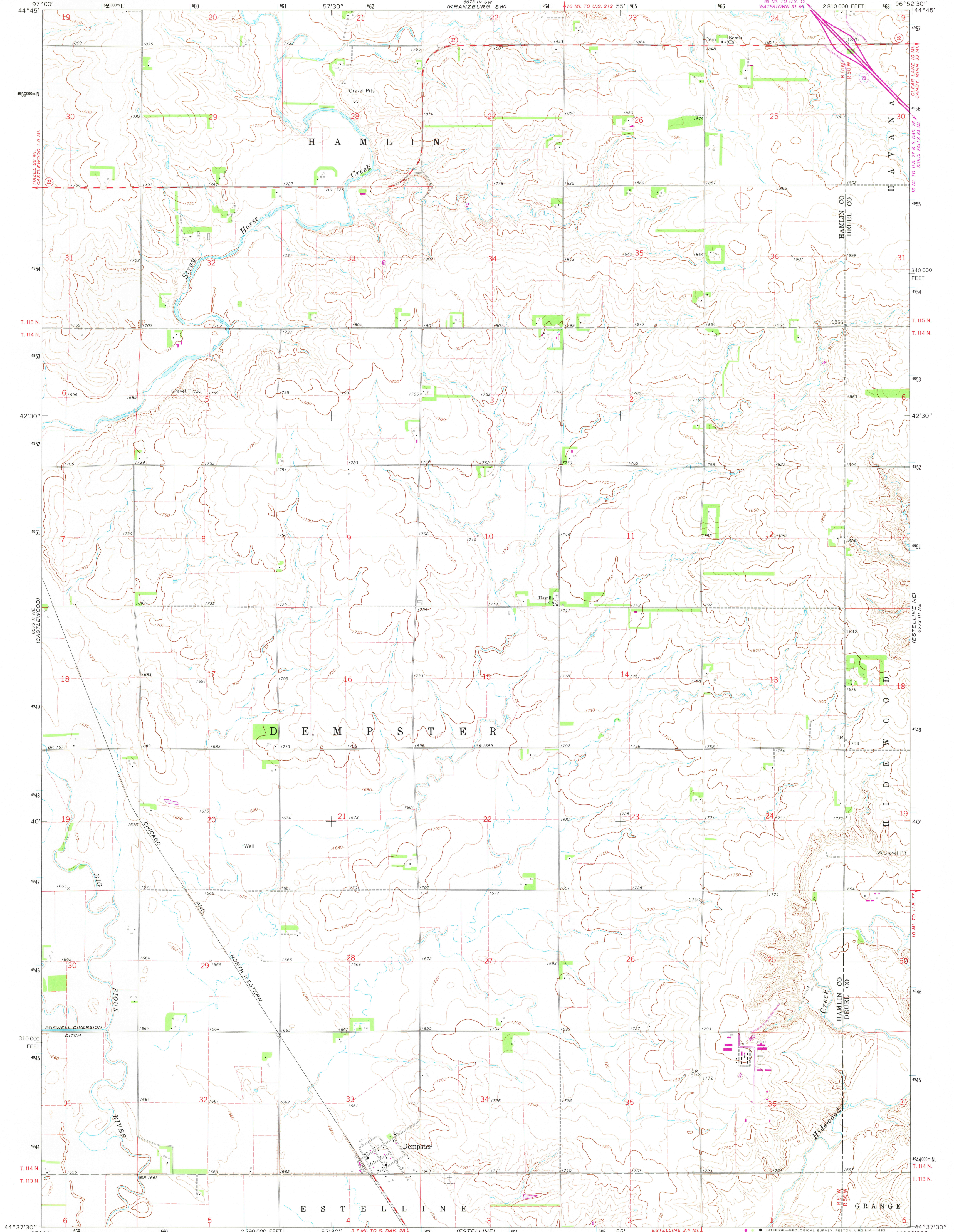


UNITED STATES  
DEPARTMENT OF THE INTERIOR  
GEOLOGICAL SURVEY

DEMPSTER QUADRANGLE  
SOUTH DAKOTA  
7.5 MINUTE SERIES (TOPOGRAPHIC)



Mapped, edited, and published by the Geological Survey

Control by USGS and USC&GS

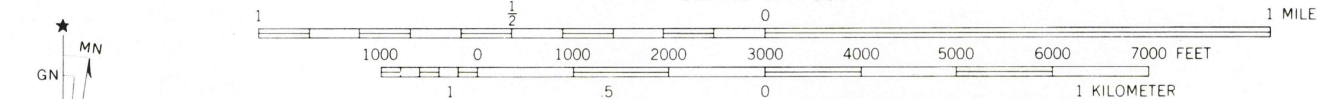
Topography by photogrammetric methods from aerial photographs taken 1966. Field checked 1969

Polycyclic projection. 1927 North American datum 10,000-foot grid based on South Dakota coordinate system, north zone 1000-meter Universal Transverse Mercator grid ticks, zone 14, shown in blue

Fine red dashed lines indicate selected fence and field lines where generally visible on aerial photographs  
This information is unchecked

To place on the predicted North American Datum 1983 move the projection lines 7 meters north and 27 meters east as shown by dashed corner ticks

Revisions shown in purple compiled from aerial photographs taken 1978. Map edited 1981. This information not field checked



CONTOUR INTERVAL 10 FEET  
NATIONAL GEODETIC VERTICAL DATUM OF 1929



ROAD CLASSIFICATION

|  |  |
|--|--|
| Primary highway, all weather, hard surface   | Light-duty road, all weather, improved surface |
| Secondary highway, all weather, hard surface | Unimproved road, fair or dry weather           |
| Interstate Route                             | State Route                                    |

DEMPSTER, S. DAK.  
N4437.5-W9652.5/7.5

1969  
PHOTOREVISED 1981  
DMA 6673 III NW—SERIES V873

RETURN TO:  
USGS AND HISTORICAL MAP ARCHIVES

DEC 29 1991

7050