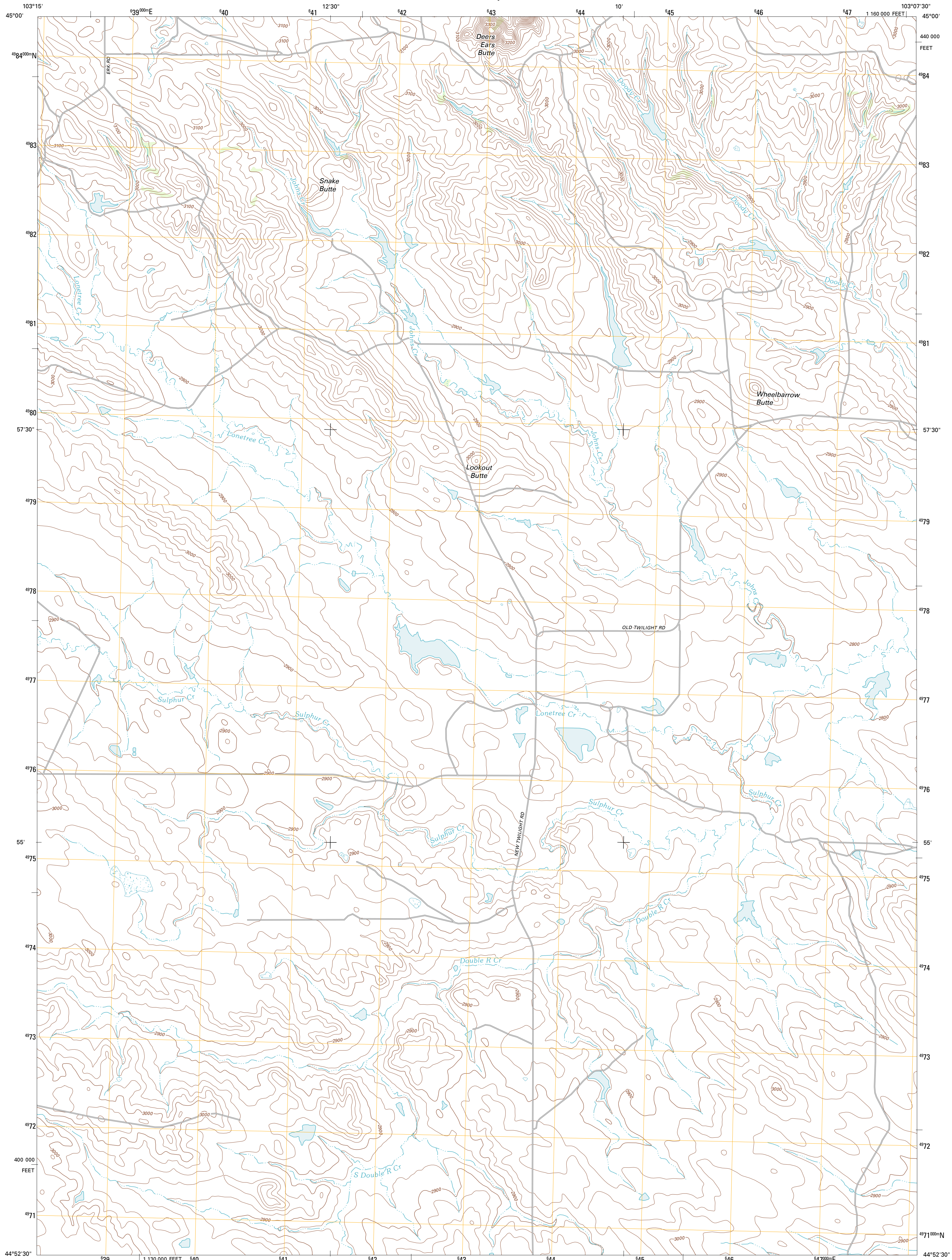




U.S. DEPARTMENT OF THE INTERIOR
U. S. GEOLOGICAL SURVEY

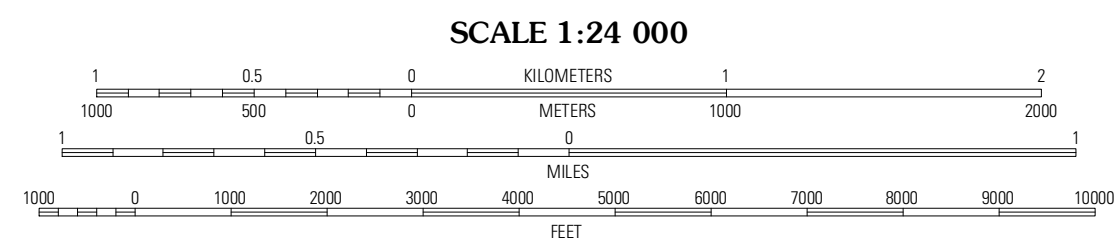
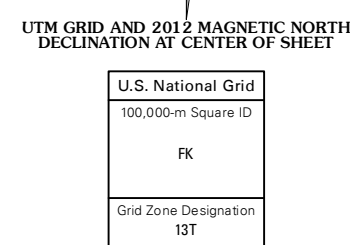


DEERS EARS BUTTE SOUTH QUADRANGLE
SOUTH DAKOTA-BUTTE CO.
7.5-MINUTE SERIES



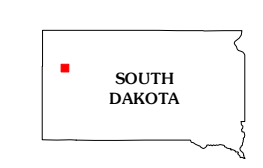
Produced by the United States Geological Survey
North American Datum of 1983 (NAD83)
World Geodetic System of 1984 (WGS84). Projection and
1 000-meter grid: Universal Transverse Mercator, Zone 13T
10 000-foot ticks: South Dakota Coordinate System of 1983
(north zone)

Imagery.....N.A.P., August 2010
Roads.....©2006-2011 TomTom
Names.....GNS, 2011
Hydrography.....National Hydrography Dataset, 2010
Contours.....National Elevation Dataset, 2012
Boundaries.....Census, IBWC, IBC, USGS, 1972 - 2010



CONTOUR INTERVAL 20 FEET
NORTH AMERICAN VERTICAL DATUM OF 1988

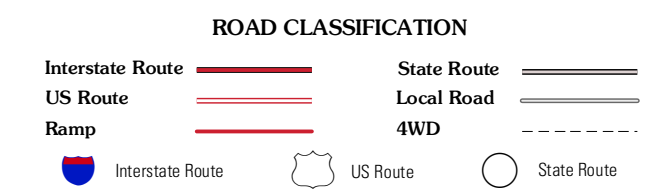
This map was produced to conform with the
National Geospatial Program US Topo Product Standard, 2011.
A metadata file associated with this product is draft version 0.6.3



QUADRANGLE LOCATION

Hoover Butte	Deers Ears Butte North	Tomato Can Buttes
Sulphur Butte	Deers Ears Butte South	Out Butte NE
Schoep Flat	Out Butte	Out Butte SE

ADJOINING 7.5 QUADRANGLES



DEERS EARS BUTTE SOUTH, SD
2012