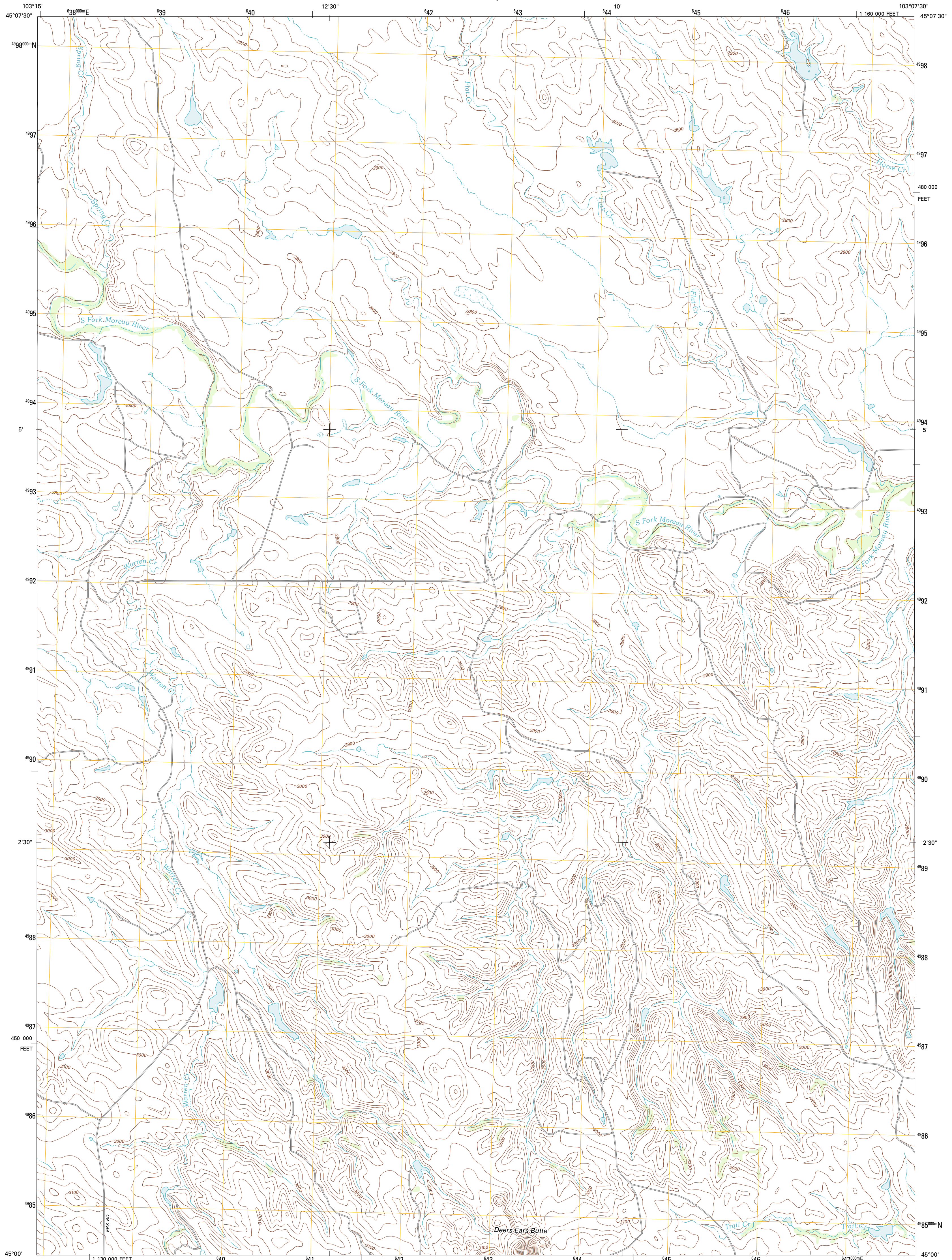




U.S. DEPARTMENT OF THE INTERIOR  
U. S. GEOLOGICAL SURVEY



DEERS EARS BUTTE NORTH QUADRANGLE  
SOUTH DAKOTA-BUTTE CO.  
7.5-MINUTE SERIES



Produced by the United States Geological Survey  
North American Datum of 1983 (NAD83)  
World Geodetic System of 1984 (WGS84). Projection and  
1 000-meter grid: Universal Transverse Mercator, Zone 13T  
10 000-foot ticks: South Dakota Coordinate System of 1983  
(north zone)

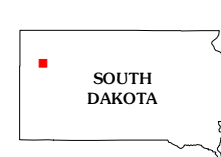
Imagery.....NAIP, August 2010  
Roads.....©2006-2011 TomTom  
Names.....GNIS, 2011  
Hydrography.....National Hydrography Dataset, 2010  
Contours.....National Elevation Dataset, 2012  
Boundaries.....Census, IBWC, IBC, USGS, 1972 - 2010

UTM GRID AND 2012 MAGNETIC NORTH  
DECLINATION AT CENTER OF SHEET

U.S. National Grid  
100,000m Square ID  
FK  
Grid Zone Designation  
13T



SCALE 1:24 000  
CONTOUR INTERVAL 20 FEET  
NORTH AMERICAN VERTICAL DATUM OF 1988  
This map was produced to conform with the  
National Geospatial Program US Topo Product Standard, 2011.  
A metadata file associated with this product is draft version 0.6.3



ROAD CLASSIFICATION

Interstate Route State Route

US Route Local Road

Ramp 4WD

Interstate Route US Route State Route

QUADRANGLE LOCATION

Granger Creek	Porter Creek	Fish Draw
Hoover	Deers Ears Butte North	Tomato Can Buttes
Subbur Butte	Deers Ears Butte South	Owl Butte NE

ADJOINING 7.5' QUADRANGLES

DEERS EARS BUTTE NORTH, SD  
2012