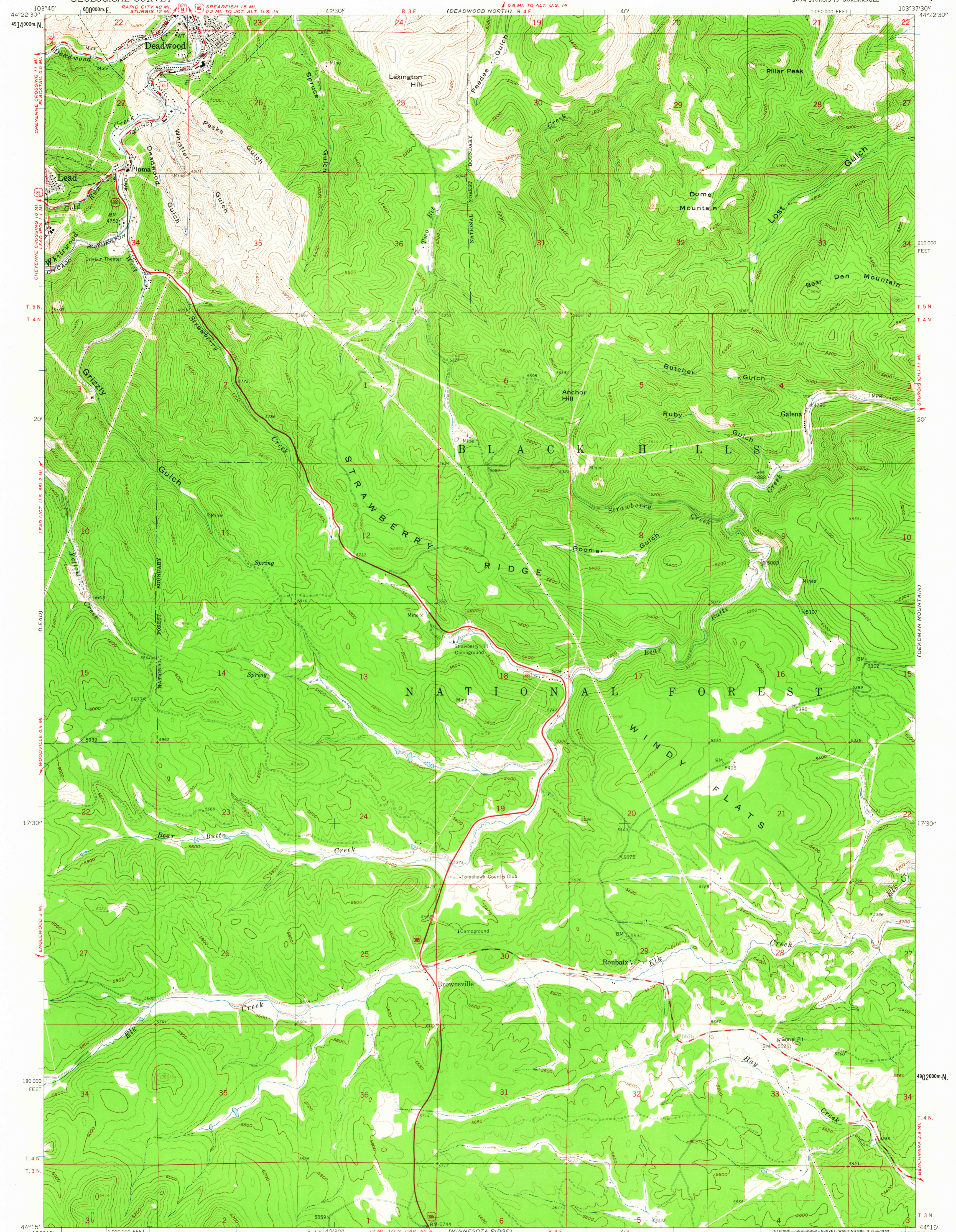
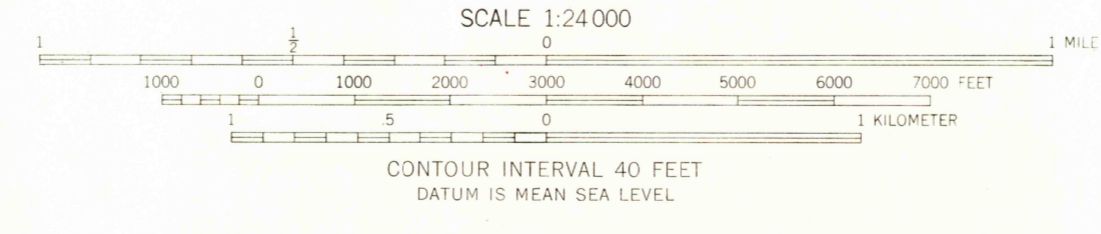
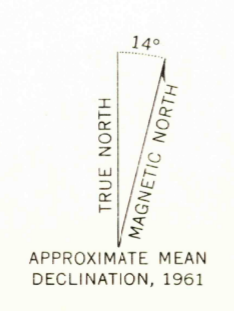


UNITED STATES  
DEPARTMENT OF THE INTERIOR  
GEOLOGICAL SURVEY

DEADWOOD SOUTH QUADRANGLE  
SOUTH DAKOTA—LAWRENCE CO.  
7.5 MINUTE SERIES (TOPOGRAPHIC)  
SW 1/4 STURGIS 15' QUADRANGLE

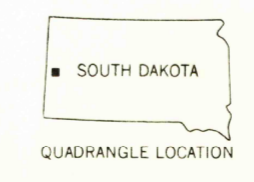


Mapped, edited, and published by the Geological Survey  
Control by USGS and USC&GS  
Topography by photogrammetric methods from aerial  
photographs taken 1958. Field checked 1961  
Polyconic projection. 1927 North American datum  
10,000-foot grid based on South Dakota coordinate system, north zone  
1000-meter Universal Transverse Mercator grid ticks,  
zone 13, shown in blue  
Fine red dashed lines indicate selected fence and field lines where  
generally visible on aerial photographs. This information is unchecked



USGS  
HISTORICAL FILE  
TOPOGRAPHIC DIVISION

ROAD CLASSIFICATION	
Heavy-duty	Light-duty
Medium-duty	Unimproved dirt
U.S. Route	



DEADWOOD SOUTH, S. DAK.  
SW 1/4 STURGIS 15' QUADRANGLE  
N 4415—W 10337.5/7.5

THIS MAP COMPLIES WITH NATIONAL MAP ACCURACY STANDARDS  
FOR SALE BY U. S. GEOLOGICAL SURVEY, DENVER 25, COLORADO OR WASHINGTON 25, D. C.  
A FOLDER DESCRIBING TOPOGRAPHIC MAPS AND SYMBOLS IS AVAILABLE ON REQUEST

1961

OCT - 9 1963

2660

USGS  
TOPOGRAPHIC DIVISION