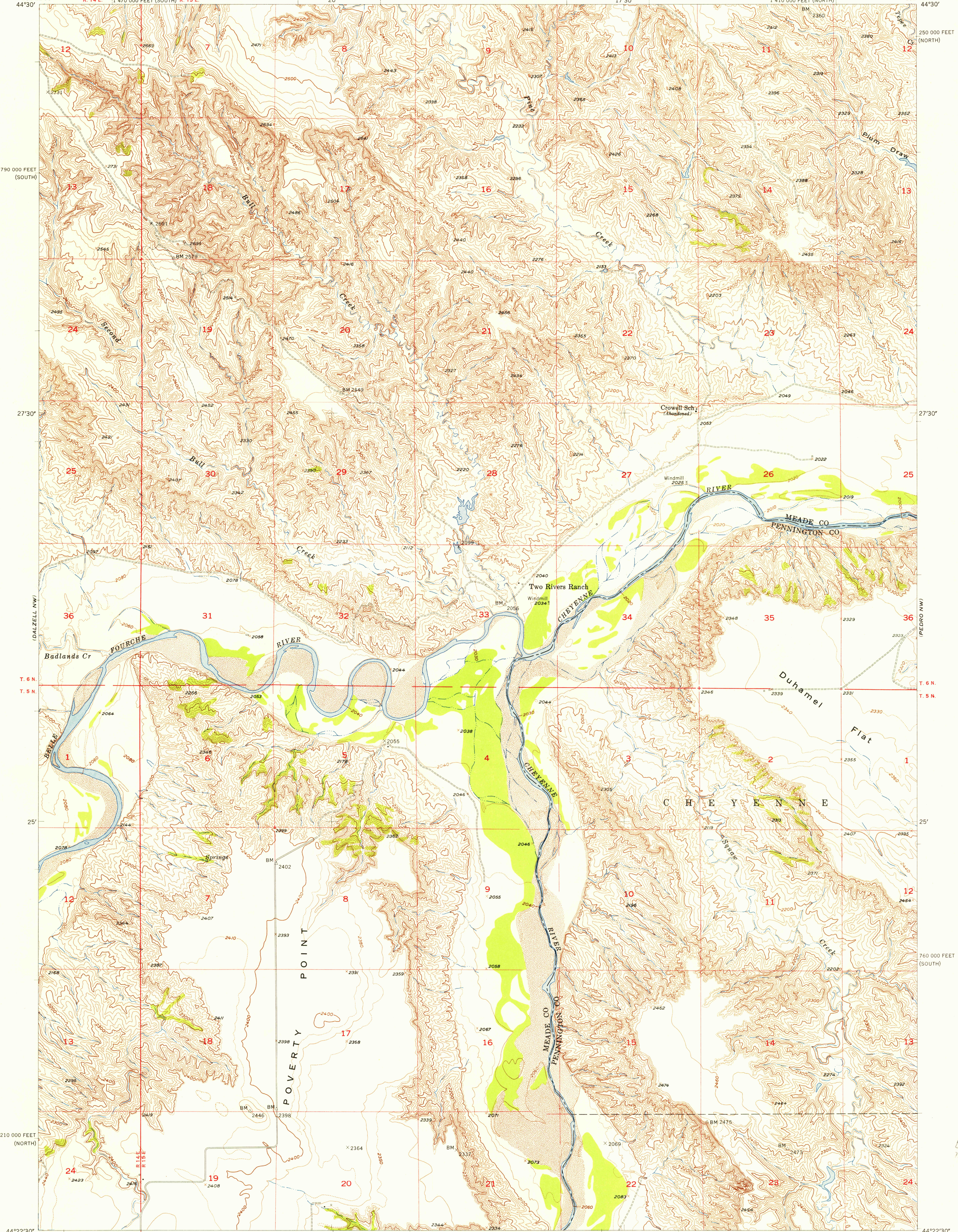


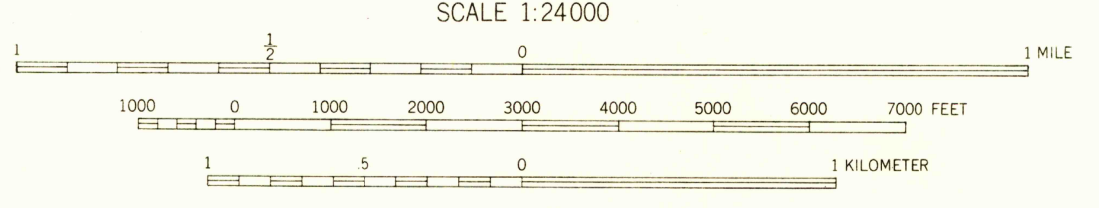
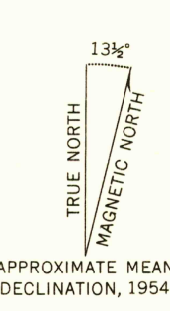
102°22'30" 14 E 1 470 000 FEET (SOUTH) R 15 E 20' 17'30" 102°15' 1 410 000 FEET (NORTH) 44°30'



U.S.G.S.  
FILE COPY  
TOPOGRAPHIC DIVISION

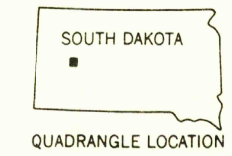
U.S.G.S.  
FILE COPY  
TOPOGRAPHIC DIVISION

Mapped, edited, and published by the Geological Survey as part of the Department of the Interior program for the development of the Missouri River Basin. Control by USGS and USC&GS. Topography from aerial photographs by photogrammetric methods. Aerial photographs taken 1948. Field check 1954. Polyconic projection. 1927 North American datum. 10,000-foot grids based on South Dakota coordinate system, north and south zones.



CONTOUR INTERVAL 20 FEET  
DOTTED LINES REPRESENT 10-FOOT CONTOURS  
DATUM IS MEAN SEA LEVEL

USGS  
HISTORICAL FILE  
TOPOGRAPHIC DIVISION



ROAD CLASSIFICATION

Heavy-duty	4 LANE 6 LANE	Light-duty
Medium-duty	4 LANE 6 LANE	Unimproved dirt
U.S. Route		State Route

DALZELL NE, S. DAK.  
N4422.5-W10215/7.5

1954

JUN 15 1956

THIS MAP COMPLIES WITH NATIONAL MAP ACCURACY STANDARDS  
FOR SALE BY U. S. GEOLOGICAL SURVEY, FEDERAL CENTER, DENVER, COLORADO OR WASHINGTON 25, D. C.  
A FOLDER DESCRIBING TOPOGRAPHIC MAPS AND SYMBOLS IS AVAILABLE ON REQUEST

2145