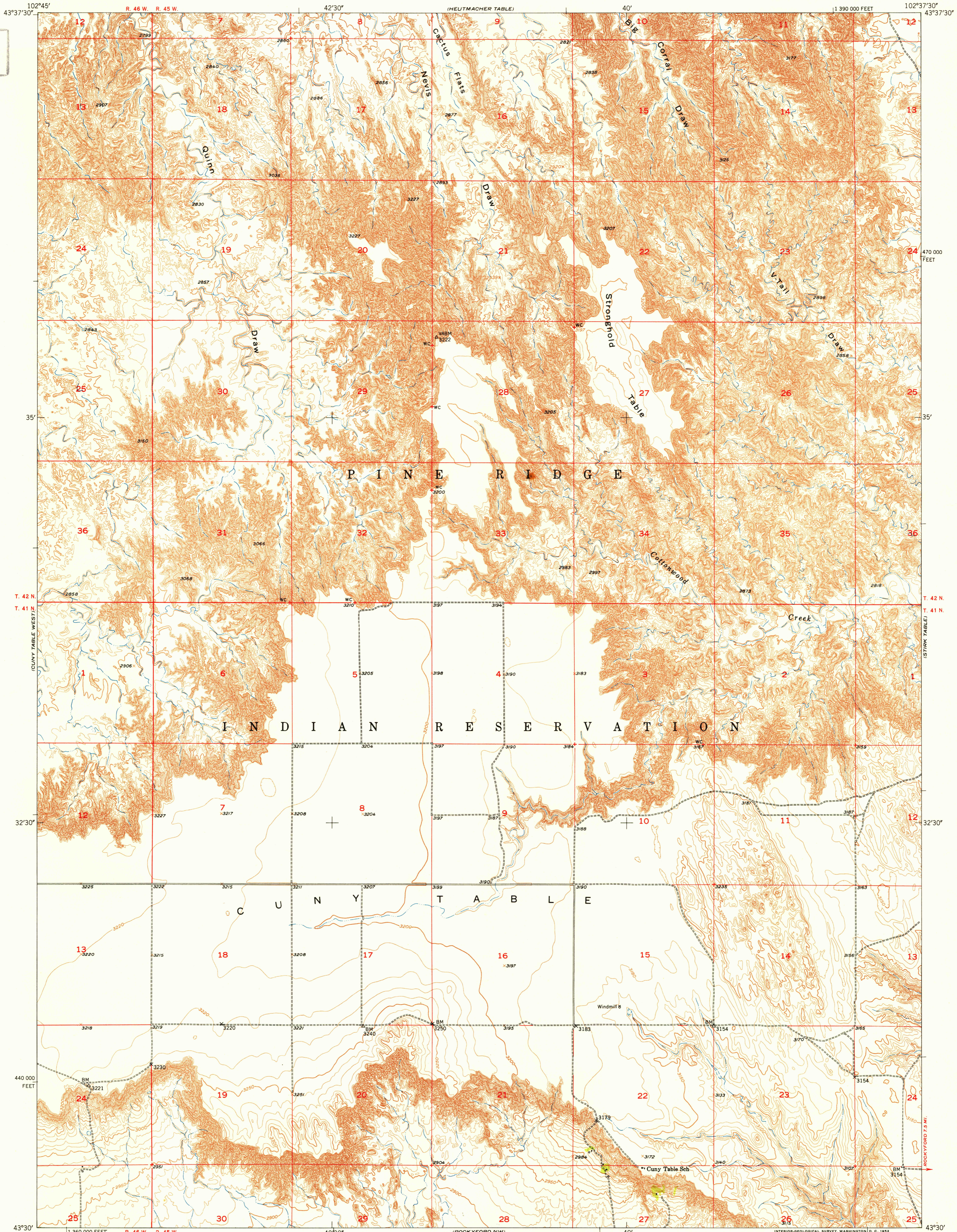
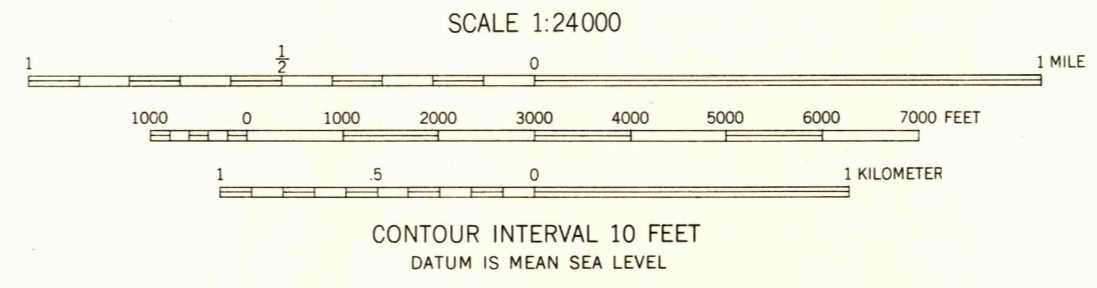
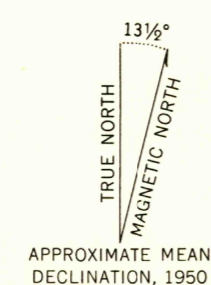


U.S.G.S.
FILE COPY
Inspection and Mapping



Mapped, edited, and published by the Geological Survey as part of the Department of the Interior program for the development of the Missouri River Basin
Control by USGS and USC&GS
Topography from aerial photographs by multiplex methods
Aerial photographs taken 1949. Field check 1950
Polyconic projection. 1927 North American datum
10,000-foot grid based on South Dakota coordinate system, south zone
Unchecked elevations are shown in brown



USES
HISTORICAL FILE
TOPOGRAPHIC DIVISION

ROAD CLASSIFICATION
Heavy-duty — 4 LANE 16 LANE Light-duty —
Medium-duty — 4 LANE 16 LANE Unimproved dirt —
U.S. Route State Route

U.S.G.S.
FILE COPY
Inspection and Mapping

CUNY TABLE EAST, S. DAK.
N4330-W10237.5/7.5
1950

THIS MAP COMPLIES WITH NATIONAL MAP ACCURACY STANDARDS
FOR SALE BY U. S. GEOLOGICAL SURVEY, FEDERAL CENTER, DENVER, COLORADO OR WASHINGTON 25, D. C.
A FOLDER DESCRIBING TOPOGRAPHIC MAPS AND SYMBOLS IS AVAILABLE ON REQUEST