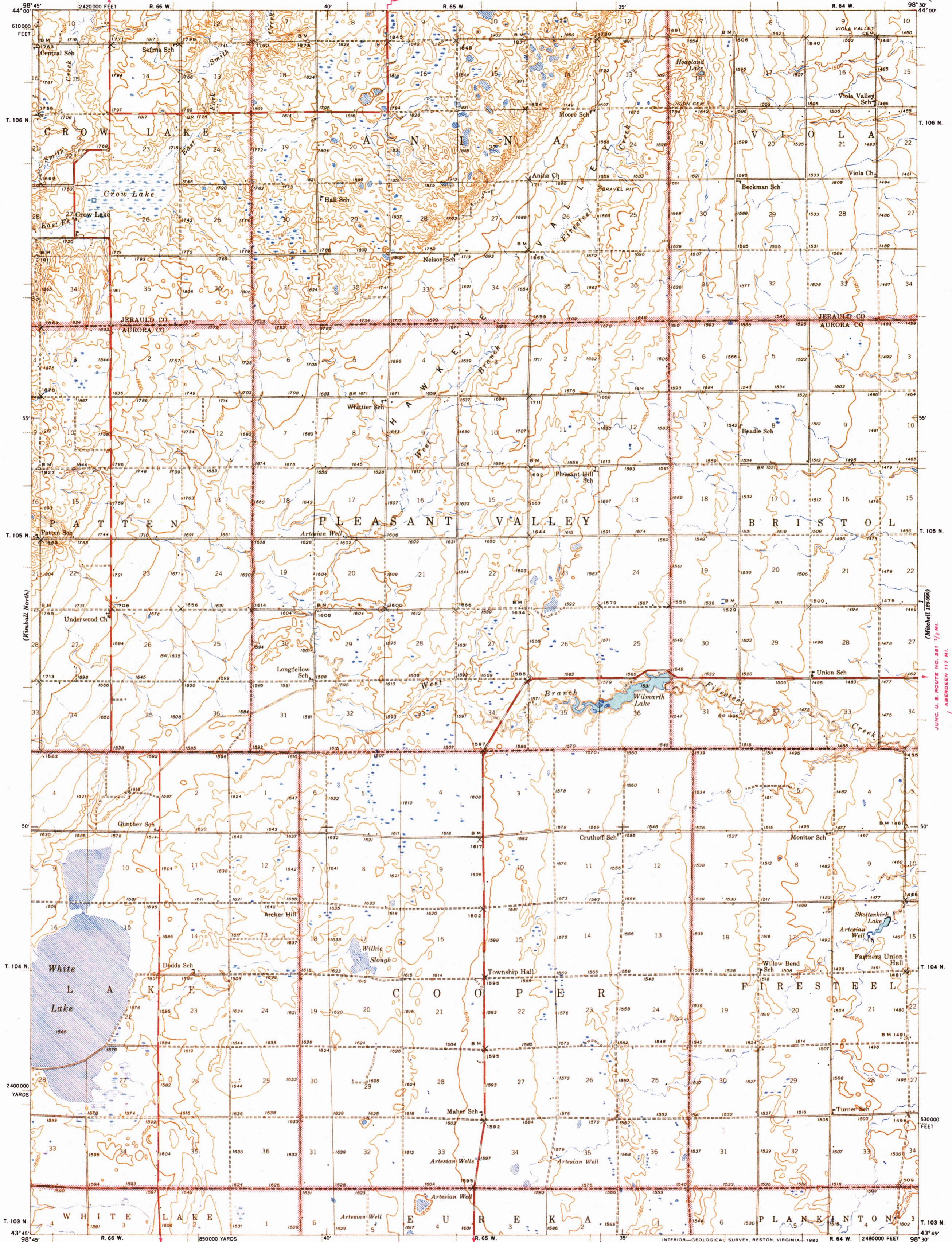
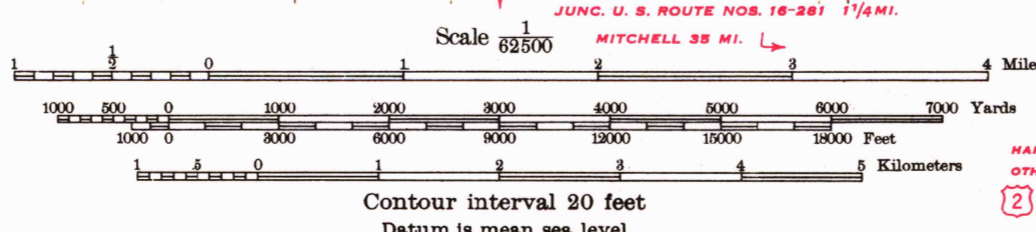


WEESINGTON SPRINGS 14 1/2 MI.
JUNC. STATE ROUTE NO. 34 5 1/2 MI.
UNITED STATES
DEPARTMENT OF THE INTERIOR
GEOLOGICAL SURVEY

SOUTH DAKOTA
CROW LAKE QUADRANGLE
15-MINUTE SERIES



Topography by D. E. Crangle, W. P. Metcalfe,
J. K. Cowger, J. T. Powell, and
H. L. Richardson
Surveyed in 1939
WHITE LAKE (JUNC. U. S. ROUTE NOS. 16-281) 1 1/4 MI.
CHAMBERLAIN 37 MI.



JUNC. U. S. ROUTE NOS. 16-281 1 1/4 MI.
MITCHELL 35 MI.
POLYCONIC PROJECTION. 1927 NORTH AMERICAN DATUM
5000 FOOT GRID BASED ON U. S. ZONE SYSTEM, D
10000 FOOT GRID BASED ON SOUTH DAKOTA (SOUTH)
RECTANGULAR COORDINATE SYSTEM
ROUTES USUALLY TRAVELED
HARD IMPERVIOUS SURFACES
OTHER SURFACE IMPROVEMENTS
U. S. ROUTE 1941 STATE ROUTE
CROW LAKE, S. DAK.
N4345-W9830/15

FOR SALE BY U. S. GEOLOGICAL SURVEY, DENVER, COLORADO 80225, OR RESTON, VIRGINIA 22092
A FOLDER DESCRIBING TOPOGRAPHIC MAPS AND SYMBOLS IS AVAILABLE ON REQUEST

This map was reproduced by electronic color scanning of an earlier printing (1942).

RETURN TO:
USGS NHD HISTORICAL MAP ARCHIVES

RETURN TO:
USGS NHD HISTORICAL MAP ARCHIVES

SEP 8 1982

250