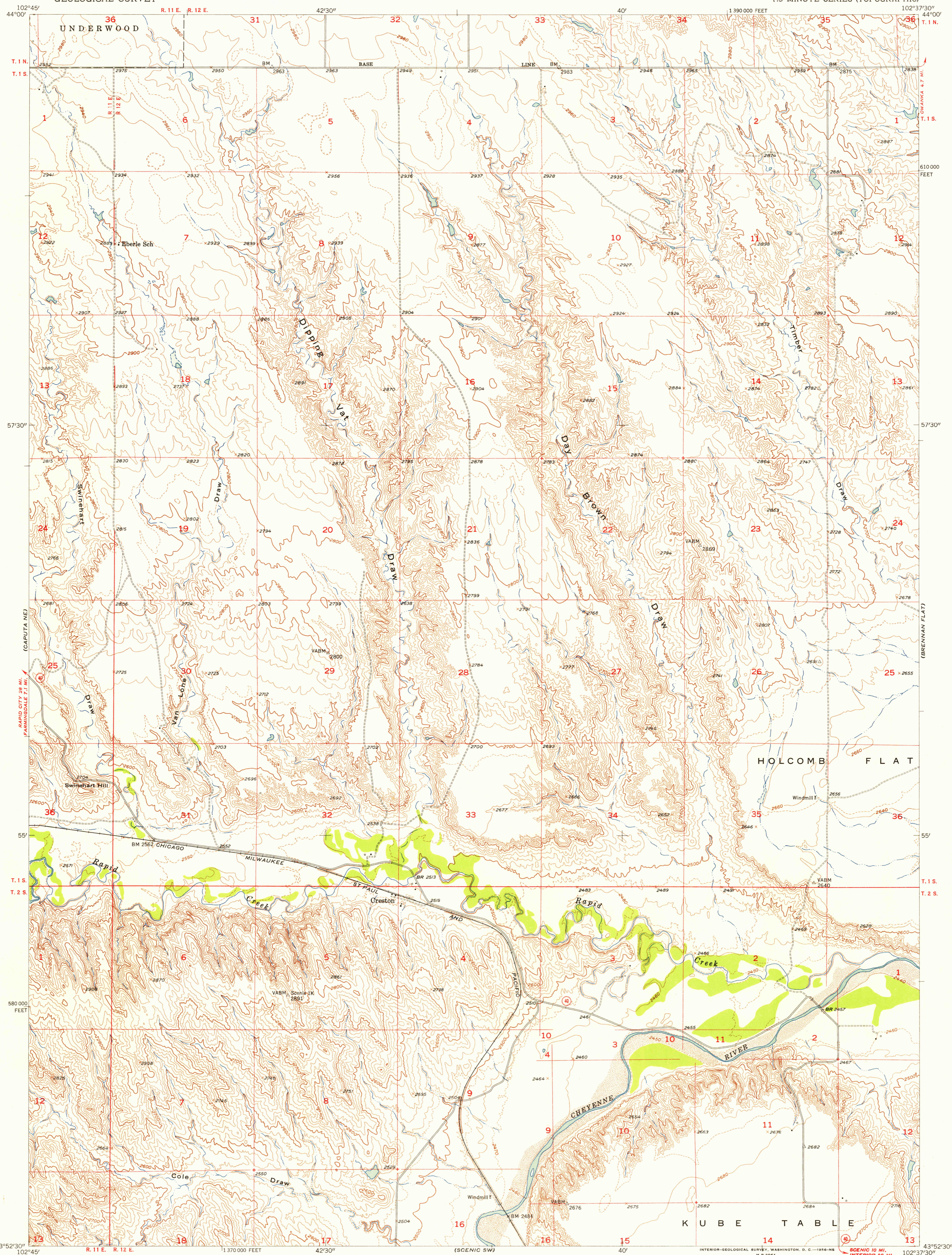
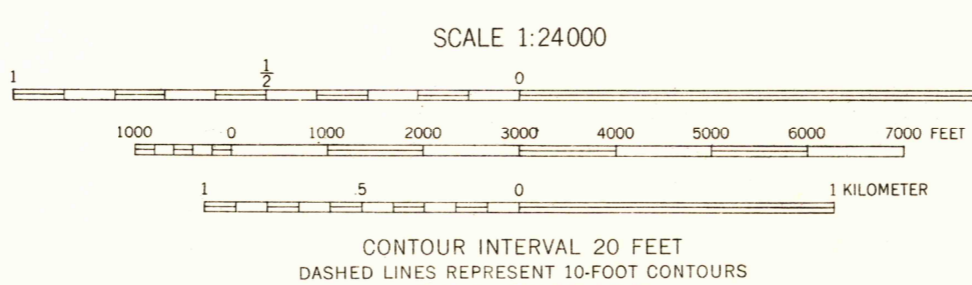


U.S.G.S.  
FILE COPY  
TOPOGRAPHIC DIVISION

U.S.G.S.  
FILE COPY  
TOPOGRAPHIC DIVISION



Mapped, edited, and published by the Geological Survey as part of the Department of the Interior program for the development of the Missouri River Basin. Control by USGS and USC&GS. Topography from aerial photographs by photogrammetric methods. Aerial photographs taken 1948. Field check 1954. Polyconic projection. 1927 North American datum. 10,000-foot grid based on South Dakota coordinate system, south zone.



USGS  
HISTORICAL FILE  
TOPOGRAPHIC DIVISION

ROAD CLASSIFICATION  
Heavy-duty 4 LANE 16 LANE Light-duty  
Medium-duty 4 LANE 16 LANE Unimproved dirt  
U.S. Route State Route



CRESTON, S. DAK.  
N4352.5-W10237.5/7.5

1954

MAY 1 1955  
2095

THIS MAP COMPLIES WITH NATIONAL MAP ACCURACY STANDARDS  
FOR SALE BY U. S. GEOLOGICAL SURVEY, FEDERAL CENTER, DENVER, COLORADO OR WASHINGTON 25, D. C.  
A FOLDER DESCRIBING TOPOGRAPHIC MAPS AND SYMBOLS IS AVAILABLE ON REQUEST