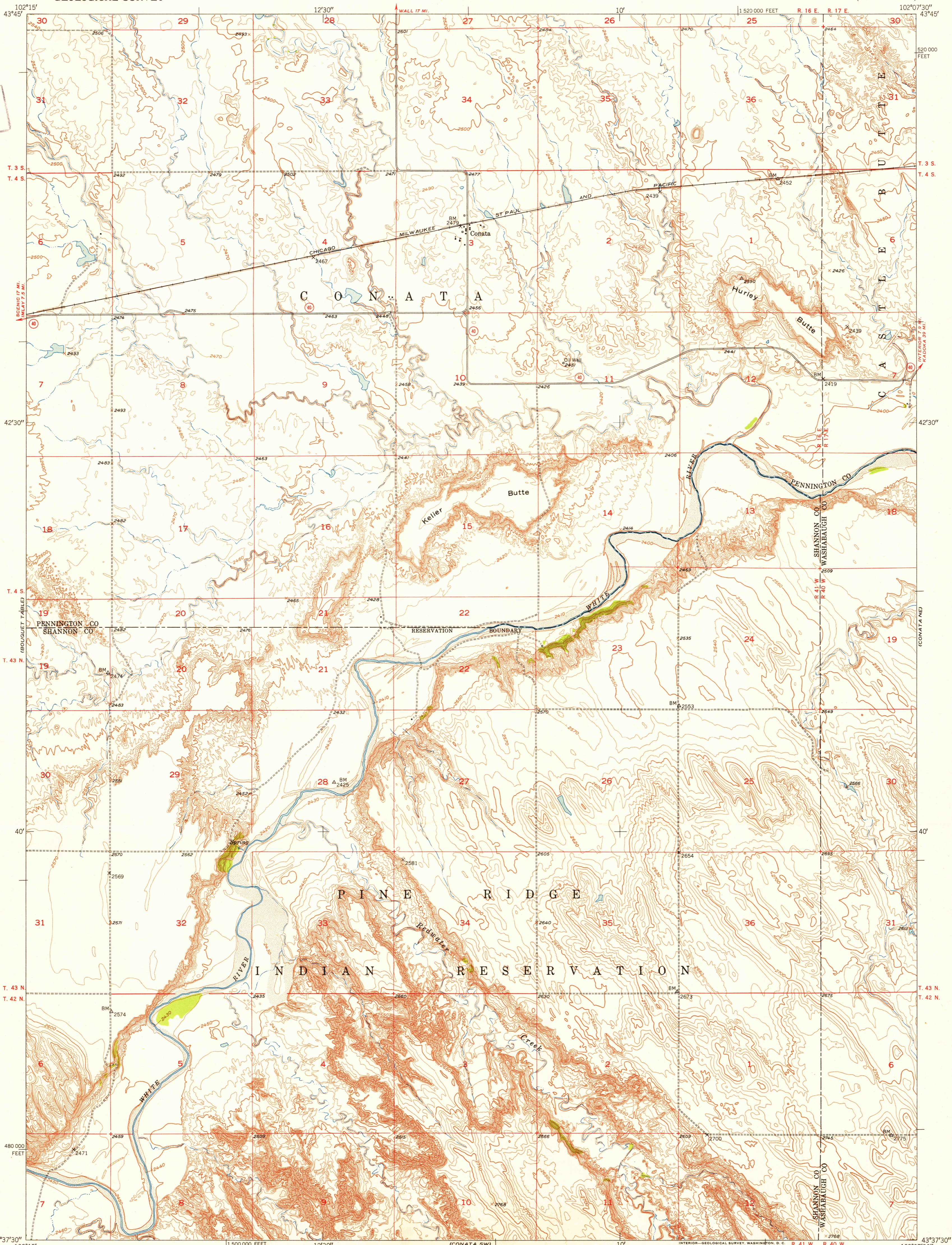
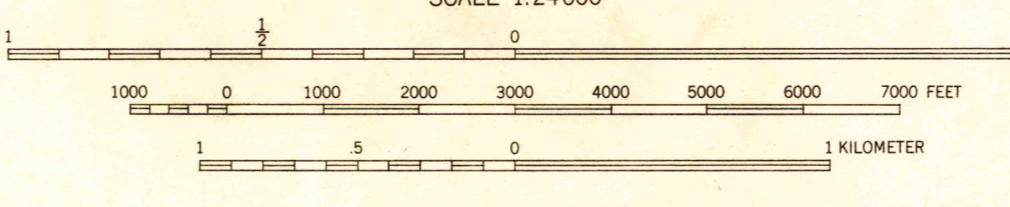


U.S.G.S  
FILE COPY  
Inspection and Editing.



Mapped, edited, and published by the Geological Survey as part of the Department of the Interior program for the development of the Missouri River Basin  
Control by USGS and USC&GS  
Topography from aerial photographs by multiplex methods Aerial photographs taken 1948. Field check 1950  
Polyconic projection. 1927 North American datum 10,000-foot grid based on South Dakota coordinate system, south zone

TRUE NORTH  
MAGNETIC NORTH  
APPROXIMATE MEAN DECLINATION, 1950



ROAD CLASSIFICATION  
Heavy-duty 4 LANE 16 LANE Light-duty  
Medium-duty 4 LANE 16 LANE Unimproved dirt  
U.S. Route State Route

USGS  
HISTORICAL FILE  
TOPOGRAPHIC DIVISION

THIS MAP COMPLIES WITH NATIONAL MAP ACCURACY STANDARDS  
FOR SALE BY U.S. GEOLOGICAL SURVEY, FEDERAL CENTER, DENVER, COLORADO OR WASHINGTON 25, D. C.  
A FOLDER DESCRIBING TOPOGRAPHIC MAPS AND SYMBOLS IS AVAILABLE ON REQUEST

U.S.G.S  
FILE COPY  
Inspection and Editing.

CONATA, S. DAK.  
N4337.5-W10207.5/7.5  
EDITION OF 1952