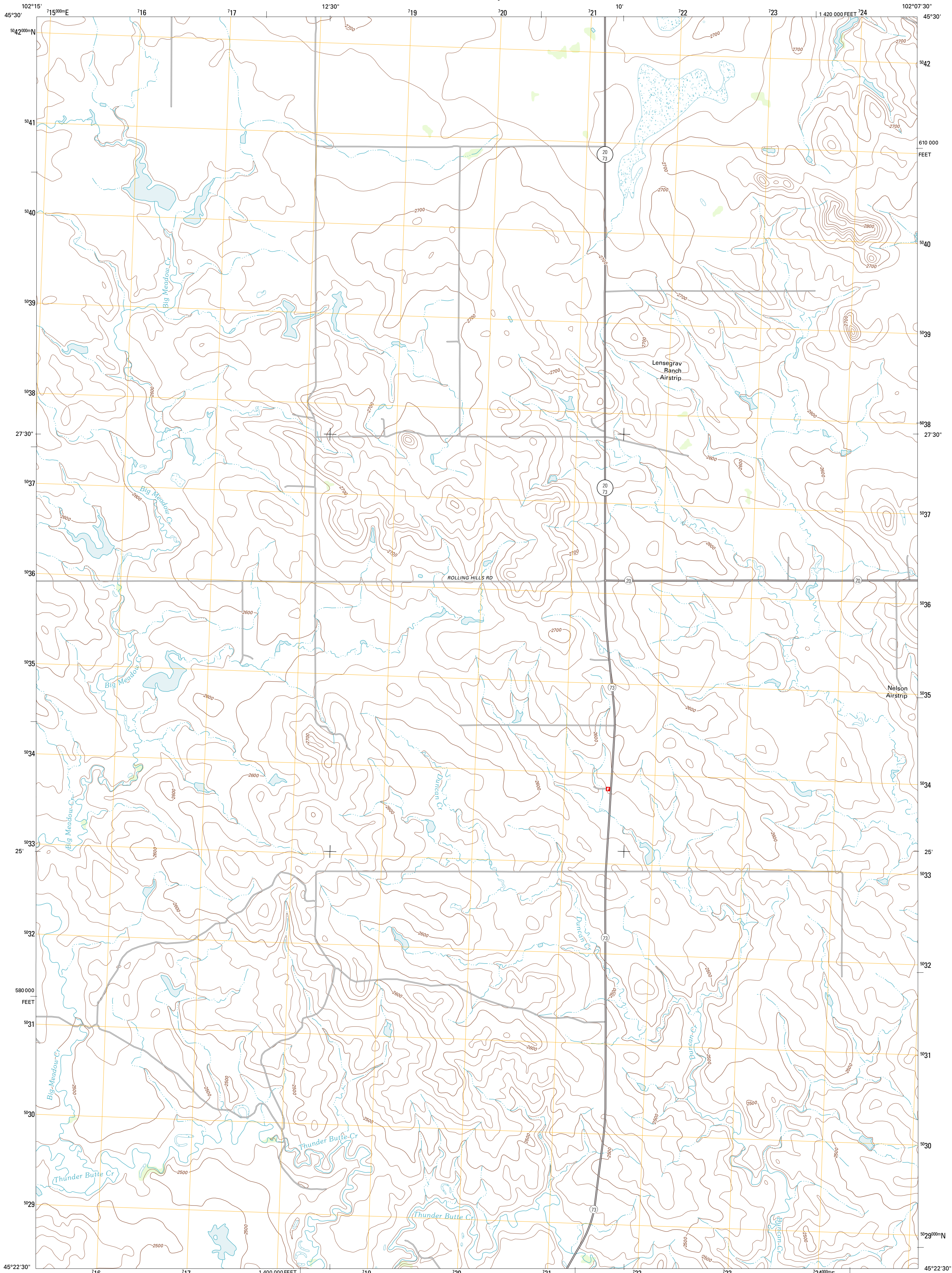




U.S. DEPARTMENT OF THE INTERIOR
U. S. GEOLOGICAL SURVEY

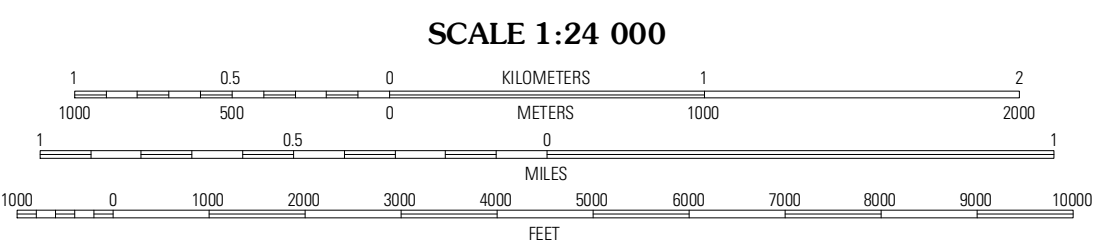
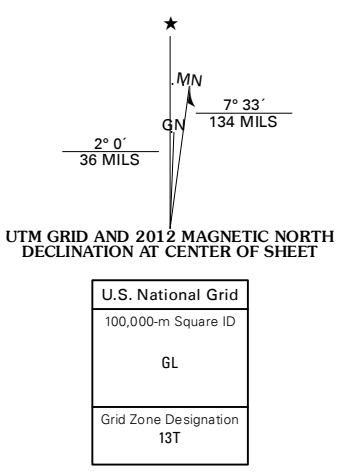


COAL SPRINGS NW QUADRANGLE
SOUTH DAKOTA-PERKINS CO.
7.5-MINUTE SERIES



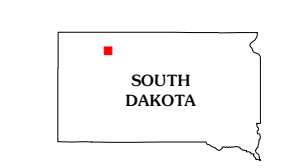
Produced by the United States Geological Survey
North American Datum of 1983 (NAD83)
World Geodetic System of 1984 (WGS84). Projection and
1 000-meter grid: Universal Transverse Mercator, Zone 13T
10 000-foot ticks: South Dakota Coordinate System of 1983
(north zone)

Imagery.....NAP, July 2010
Roads.....©2006-2011 TomTom
Names.....GNS, 2011
Hydrography.....National Hydrography Dataset, 2010
Contours.....National Elevation Dataset, 2012
Boundaries.....Census, IBWC, IBC, USGS, 1972 - 2010



CONTOUR INTERVAL 20 FEET
NORTH AMERICAN VERTICAL DATUM OF 1988

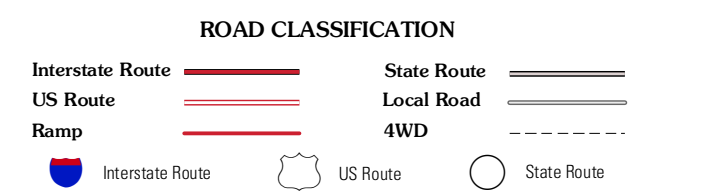
This map was produced to conform with the
National Geospatial Program US Topo Product Standard, 2011.
A metadata file associated with this product is draft version 0.6.3



QUADRANGLE LOCATION

Boxcar Buttes	Meadow	Meadow SE
Chance	Coal Springs NW	Coal Springs
Sumner Butte	Coal Springs SW	Coal Springs SE

ADJOINING 7.5' QUADRANGLES



COAL SPRINGS NW, SD
2012